

TRACK AND FIELD



BRONZE PACKAGE

FINISHLYNX[®] FULLY AUTOMATIC TIMING SOLUTIONS

The **Bronze FinishLynx Package** is ideal for first time FinishLynx users looking to time NFHS-approved events!

WHY FULLY AUTOMATIC TIMING (FAT)?

FAT is the standard today by every regulatory body in Track & Field and mandated for record ratification at all levels, including the International Association of Athletics Federations (IAAF) to the National Federation of High Schools (NFHS).

In order to be used to sanction meet results for new state, national and international records, an approved FAT system must:

- Start timing automatically by the signal from the starting apparatus
- Be capable of producing printed images showing times
- Capture timing to a precision of at least 1/100th second



BRONZE PACKAGE COMPONENTS

All of your bronze package equipment can be upgraded and added on to at any time to move up package levels as your facility's needs change and grow.

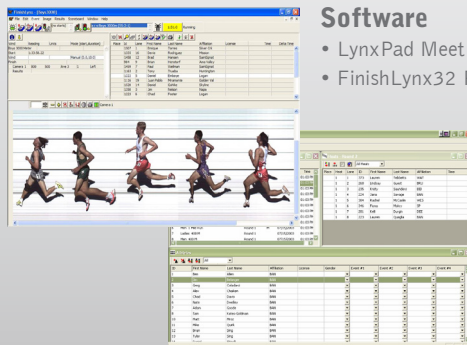


Camera: EtherLynx Vision

- 1000 fps
- Full-color, timer-enabled, fully upgradeable
- EasyAlign Full-Frame Video Alignment Mode
- Manual Zoom Lens



Tripod and Mounting Hardware



Software

- LynxPad Meet Management
- FinishLynx32 Photo-Finish



Custom Storage/Carrying Case



INTEGRATED DISPLAY AND SCORING SOLUTIONS

OPTIONAL UPGRADES & ACCESSORIES

Enhance your bronze package with upgraded features and functions!



RadioLynx Wireless Start System



37"W x 6.2"H 10mm 9-Digit LED Display



Auto-Capture Mode (ACM) Plug-In



3.2"W x 1.6"H 5mm Portable LED Display



6.9"W x 4.8"H 5mm Infield Video Display

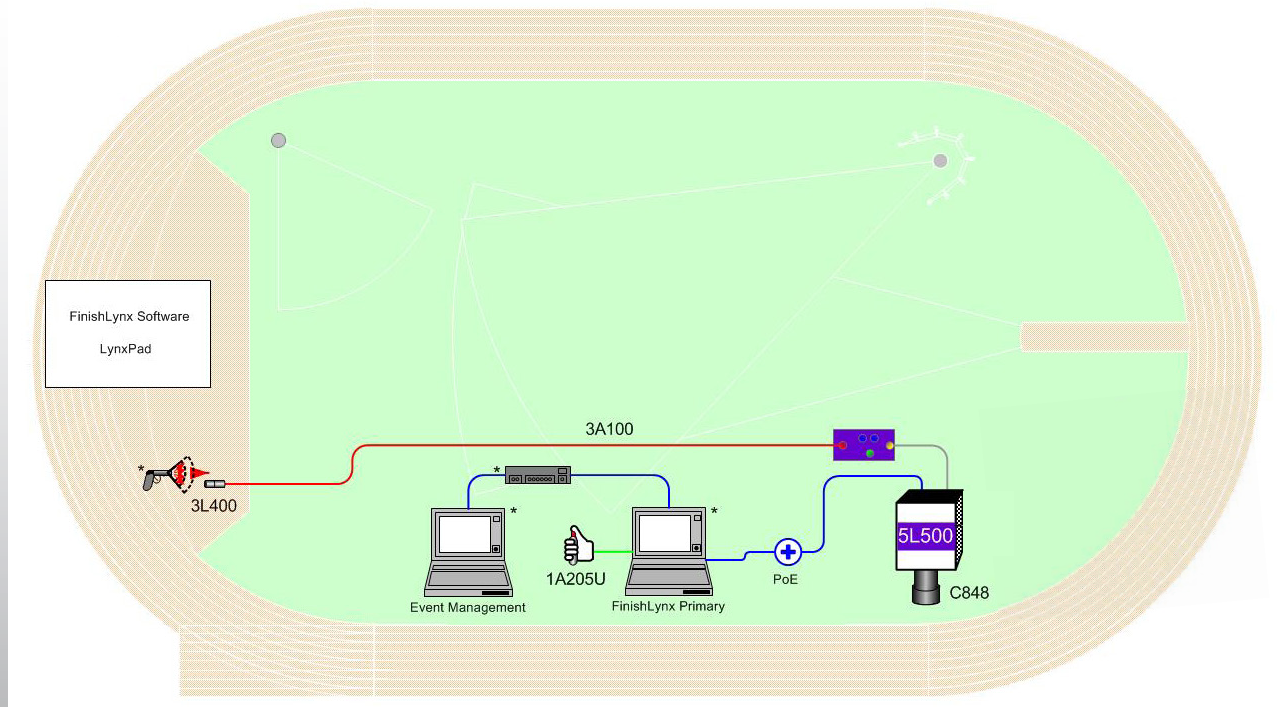


IdentiLynx Full-Frame Video Camera



Wind Gauge

BRONZE PACKAGE SET-UP



GUARANTEE: TO VIEW OR RECEIVE THE MOST RECENT COPY OF OUR GUARANTEE, PLEASE VISIT: NEVCO.COM/WARRANTY-LIMITATION/

U.S. SERVICE: 1-800-851-4040

INTERNATIONAL SERVICE: 1-618-664-0360

CANADA SERVICE: 1-800-461-8550

VISIT US ONLINE AT:

WWW.NEVCO.COM

U.S. & CANADA: 800-851-4040 INTERNATIONAL: 618-664-0360

FAX: 618-664-0398 E-MAIL: INFO@NEVCO.COM