

Additional display area consisting of signs, arches, message centers or video above or below the scoreboard. (see sheets 3-7) for column and pier sizing)

DIMENSIONS AND SPECIFICATIONS						
MODEL	WIDTH	HEIGHT	WEIGHT	WEIGHT W/ET	DIM "A"	DIM "B"
3620 7620	32'	8' 3/16"	760 lbs	822 lbs	4'	8'
3657	32'	10' 3/16"	890 lbs	952 lbs	4'	8'
3688 7688	32'	8' 3/16"	N/A	930 lbs	4'	8'
1603	36'	9' 3/16"	930 lbs	992 lbs	3'	10'
1603PC	36'	9' 3/16"	930 lbs	992 lbs	3'	10'
3616 7616	36'	10' 3/16"	1020 lbs	1220 lbs	3'	10'

Rev	A
-----	---

- General Notes:
1. Column steel to be grade A992 (50 ksi steel minimum).
 2. Bracing steel to be ASTM A500 Grade B minimum (see 241-0416).
 3. Minimum bolt grade: A307
 4. All welds to conform to AWS standards
 5. The dimensions in the charts on sheets 2-6 are calculated using the requirements specified in IBC 2012, and the Manual of Steel Construction (13th Edition). Soil lateral bearing pressure is considered to be 150 psf/f.
 6. Check with the local building authority to determine the installation sites wind zone and risk category as specified in IBC 2012 and ASCE 7-10. For the purposes of these installation prints, Risk Category I shall apply to an installation where the scoreboard is more than 1.5 x the overall height away from the nearest spectator section. Risk Category II shall apply to all other installations.
 7. The weights of signs to be calculated using 4.3 lb/sq. ft of sign area.
 8. The weights of Nevco message centers to be calculated using 8.5 lb/sq ft.
 9. The weights of Nevco video displays to be calculated using 9.5 lbs/sq. ft.
 10. The weights of Nevco arches to be calculated using 7.7 lbs/sq. ft.

Important. Read before installation.
This is not an engineered drawing. It is intended for representational purposes only. The dimensions called out on this drawing are intended to be used as a guide only, and are not intended to be suitable for all conditions. Adding signs or other components around the scoreboard beyond the scope of this drawing or increasing the display height from the ground will affect the installation requirements. Nevco recommends that you consult a professional engineer or architect familiar with the area before attempting installation. They can verify that the selected mounting beams or posts along with the brackets, screws, and other hardware items provided by others or Nevco are adequate for your local soil conditions, wind loads and other local codes. If procedures are used that are not covered in this drawing, careful analysis of the installation is urged.

Outdoor Scoreboard
Pier Installation
4 Column
Multi-Section

Nevco, Inc.
Greenville, Illinois 62246

Drawn
KAB

Date
12/14/18

Drawing No.
241-0408

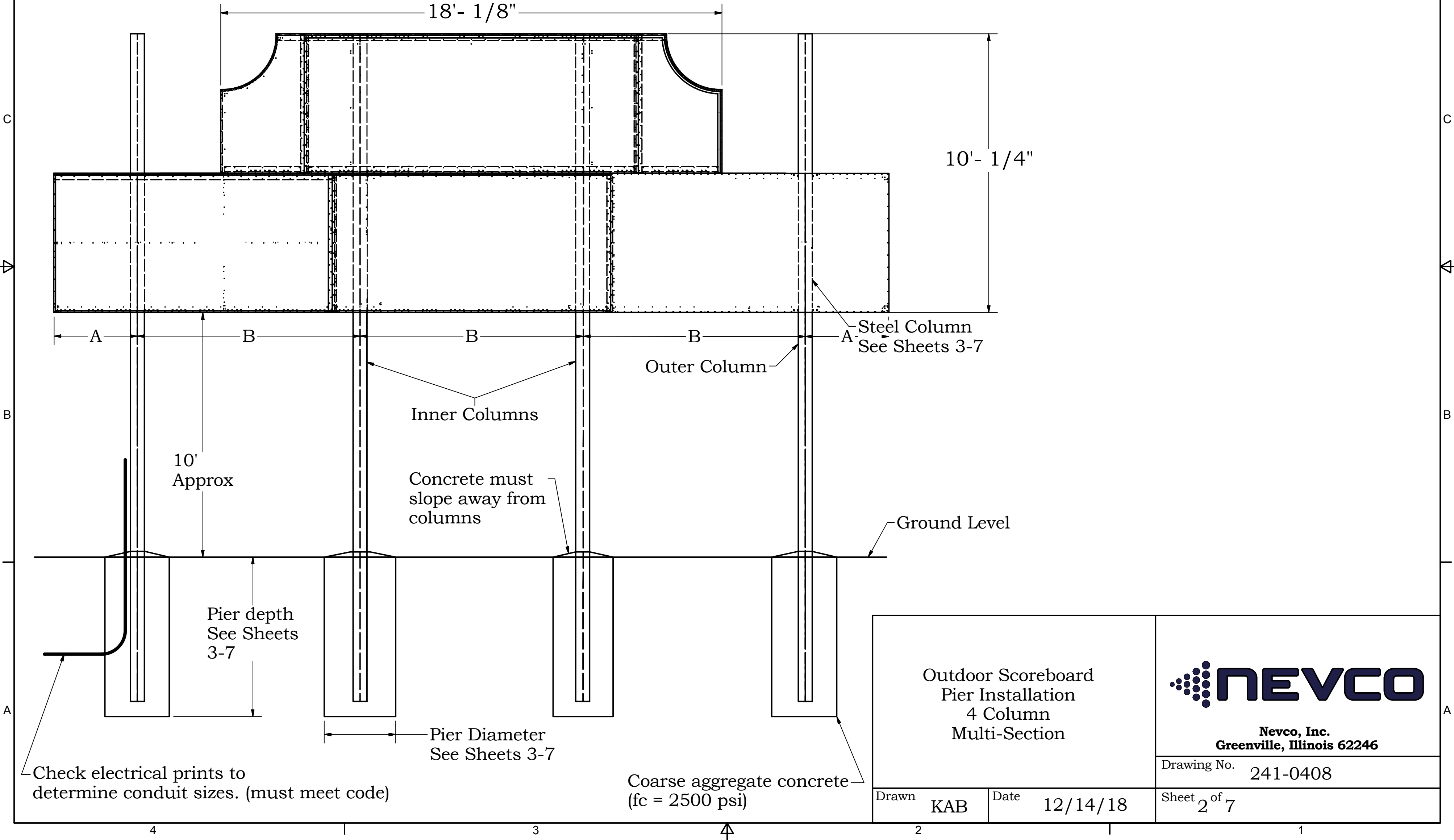
Sheet 1 of 7

3604 Scoreboard

Rev	A
-----	---

DIMENSIONS AND SPECIFICATIONS						
MODEL	WIDTH	HEIGHT	WEIGHT	WEIGHT W/ ET	DIM "A"	DIM "B"
3604	30'	10' 3/16"	630 lbs	692 lbs	3'	8'

Outer columns are 5' shorter than inner columns.



105 MPH WIND ZONES

Rev A

EXPOSURE C (See Note 3)

Column and Foundation Requirements (Based on ASCE 7-10)					
Display Height	Unbraced Column	Braced Column*	Pier Dia.	Pier Depth	Column Length
10'	W8x28	W8x21	2' (3')	9'6" (8')	28'6" (27')
12'	W10x33	W14x22	2' (3')	10'6" (9')	31'6" (30')
14'	W10x39	W10x26	2' (3')	11' (9'6")	34' (32'6")
16'	W10x45	W12x30	2' (3')	12' (10')	37' (35')
18'	W10x49	W14x30	2' (3')	12'6" (10'6")	39'6" (37'6")
20'	W12x53	W14x34	2' (3')	13'6" (11')	42'6" (40')
22'	W10x60	W16x36	2' (3')	14'6" (12')	45'6" (43')
25'	W12x65	W16x40	2' (3')	16' (12'6")	50' (46'6")
30'	W12x87	W16x50	2' (3')	19' (14'6")	58' (53'6")
35'	W12x106	W21x55	3' (4')	17'6" (14'6")	61'6" (58'6")
40'	W14x120	W21x68	3' (4')	19'6" (16'6")	68'6" (65'6")

Column and Foundation Requirements (Based on ASCE 7-10)					
Display Height	Unbraced Column	Braced Column*	Pier Dia.	Pier Depth	Column Length
8'	W8x24	W8x21	2' (3')	9' (8')	26' (25')
10'	W12x30	W10x22	2' (3')	10' (8'6")	29' (27'6")
12'	W10x33	W10x26	2' (3')	11' (9'6")	32' (30'6")
14'	W10x39	W12x26	2' (3')	11'6" (10')	34'6" (33')
16'	W10x45	W12x30	2' (3')	12' (10'6")	37' (35'6")
18'	W10x49	W14x34	2' (3')	13'6" (11')	40'6" (38')
20'	W10x60	W18x35	2' (3')	14'6" (12')	43'6" (41')
22'	W12x65	W16x40	2' (3')	16' (12'6")	47' (43'6")
25'	W12x72	W21x44	2' (3')	17'6" (13'6")	51'6" (47'6")
30'	W12x96	W18x55	3' (4')	16' (13'6")	55' (52'6")
35'	W14x109	W21x62	3' (4')	19' (16')	63' (60')
40'	W14x132	W24x68	3' (4')	21' (18')	70' (67')

Column and Foundation Requirements (Based on ASCE 7-10)					
Display Height	Unbraced Column	Braced Column*	Pier Dia.	Pier Depth	Column Length
8'	W8 x 24	W8 x 21*	2' (3')	9' (8')	26' (25')
10'	W10 x 33	W10 x 22*	2' (3')	8'6" (8')	27'6" (27')
12'	W10 x 33	W10 x 26+	2' (3')	9'6" (8'6")	30'6" (29'6")
14'	W10 x 39	W12 x 26+	2' (3')	10' (9')	33' (32')
16'	W10 x 45	W12 x 30+	2' (3')	10'6" (9'6")	35'6" (34'6")
18'	W10 x 49	W14 x 34+	2' (3')	11' (10')	38' (37')
20'	W10 x 60	W16 x 36+	2' (3')	12' (10'6")	41' (39'6")
22'	W12 x 65	W16 x 40+	3' (4')	12'6" (11')	43'6" (42')
25'	W12 x 72	W21 x 44+	3' (4')	14' (12')	48' (46')
30'	W12 x 96	W18 x 55+	3' (4')	16' (13'6")	55' (52'6")
35'	W14 x 109	W21 x 62+	3' (4')	18' (15'6")	62' (59'6")
40'	W14 x 132	W24 x 68+	3' (4')	21'6" (18')	70'6" (67')

30 FEET WIDE INSTALLATIONS
(see note 5)

32 FEET WIDE INSTALLATIONS

36 FEET WIDE INSTALLATIONS

EXPOSURE B (See Note 4)

Column and Foundation Requirements (Based on ASCE 7-10)					
Display Height	Unbraced Column	Braced Column*	Pier Dia.	Pier Depth	Column Length
10'	W8x24	W8x18	2' (3')	8'6" (7')	27'6" (26')
12'	W12x26	W8x21	2' (3')	9' (7'6")	30' (28'6")
14'	W10x33	W10x22	2' (3')	9'6" (8'6")	32'6" (31'6")
16'	W8x35	W14x22	2' (3')	10'6" (9')	35'6" (34')
18'	W8x40	W10x26	2' (3')	11' (9'6")	38' (36'6")
20'	W10x45	W12x26	2' (3')	11'6" (10')	40'6" (39')
22'	W10x49	W12x30	2' (3')	12' (10'6")	43' (41'6")
25'	W10x60	W14x34	2' (3')	13' (11')	47' (45')
30'	W12x72	W16x40	2' (3')	15' (12')	54' (51')
35'	W12x96	W16x50	3' (4')	14'6" (12')	58' (56')
40'	W12x106	W18x55	3' (4')	16' (13'6")	65' (62'6")

Column and Foundation Requirements (Based on ASCE 7-10)					
Display Height	Unbraced Column	Braced Column*	Pier Dia.	Pier Depth	Column Length
8'	W8x21	W10x17	2' (3')	8' (7')	25' (24')
10'	W8x24	W8x18	2' (3')	8'6" (7'6")	27'6" (26'6")
12'	W12x30	W8x21	2' (3')	9'6" (8')	30'6" (29')
14'	W10x33	W10x22	2' (3')	10' (8'6")	33' (31'6")
16'	W14x39	W10x26	2' (3')	10'6" (9')	35'6" (34')
18'	W10x45	W12x26	2' (3')	11'6" (10')	38'6" (37')
20'	W8x48	W12x30	2' (3')	12' (10'6")	41' (39'6")
22'	W12x53	W14x30	2' (3')	12'6" (11')	43'6" (42')
25'	W10x60	W18x35	2' (3')	14' (11'6")	48' (45'6")
30'	W10x77	W14x43	3' (4')	13' (11'6")	52' (50'6")
35'	W12x96	W18x50	3' (4')	15'6" (13')	59'6" (57')
40'	W14x109	W21x55	3' (4')	17'6" (14'6")	66'6" (63'6")

Column and Foundation Requirements (Based on ASCE 7-10)					
Display Height	Unbraced Column	Braced Column*	Pier Dia.	Pier Depth	Column Length
8'	W8 x 21	W10 x 17*	2' (3')	8' (7')	25' (24')
10'	W8 x 24	W8 x 18*	2' (3')	7'6" (7')	26'6" (26')
12'	W12 x 30	W8 x 21+	2' (3')	8' (7'6")	29' (28'6")
14'	W10 x 33	W10 x 22+	2' (3')	8'6" (8')	31'6" (31')
16'	W10 x 39	W10 x 26+	2' (3')	9' (8'6")	34' (33'6")
18'	W10 x 45	W12 x 26+	2' (3')	10' (9')	37' (36')
20'	W10 x 49	W12 x 30+	2' (3')	10'6" (9'6")	39'6" (38'6")
22'	W12 x 53	W14 x 34+	3' (4')	11' (10')	42' (41')
25'	W10 x 60	W18 x 35+	3' (4')	11'6" (10'6")	45'6" (44'6")
30'	W10 x 77	W14 x 43+	3' (4')	13' (11'6")	52' (50'6")
35'	W12 x 96	W18 x 50+	3' (4')	15' (12'6")	59' (56'6")
40'	W14 x 109	W21 x 62+	3' (4')	17'6" (15')	66'6" (64')

Chart Notes:

1. If the display height is between chart values shown above, use the next highest value.
2. * Requires that braces be placed approximately 10' from ground level spanning both columns. If display is taller than 20' place braces on 10' spacing.
3. Wind loading figured at **Exposure "C" - Open terrain** with scattered obstructions having heights generally less than 30 feet. This category includes flat open country, grasslands, and all water surfaces in hurricane prone areas.
4. Wind loading figured at **Exposure "B" - Urban and suburban areas**, wooded areas, or other terrain with numerous closely spaced obstructions having the size of single-family dwellings or larger. These areas prevail in the upwind direction for a distance of 2600 feet or 20 times the structure height, whichever is greater.
5. For 3604 scoreboard subtract 5' from column length for outer columns.

Outdoor Scoreboard
Pier Installation
4 Column
Multi-Section



Nevco, Inc.
Greenville, Illinois 62246

Drawing No. 241-0408

Drawn KAB

Date 12/14/18

Sheet 3 of 7

120 MPH WIND ZONES

Rev A

EXPOSURE C (See Note 3)

Column and Foundation Requirements (Based on ASCE 7-10)

Display Height	Unbraced Column	Braced Column*	Pier Dia.	Pier Depth	Column Length
10'	W10x33	W14x22	2' (3')	10'6" (9')	29'6" (28')
12'	W10x39	W12x26	2' (3')	11'6" (10')	32'6" (31')
14'	W14x43	W12x30	2' (3')	12' (10'6")	35' (33'6")
16'	W10x49	W14x34	2' (3')	13'6" (11')	38'6" (36')
18'	W12x53	W18x35	2' (3')	15' (12')	42' (39')
20'	W14x61	W16x40	2' (3')	16' (12'6")	45' (41'6")
22'	W12x65	W14x43	3' (4')	13'6" (11'6")	44'6" (42'6")
25'	W12x79	W16x50	3' (4')	15' (12'6")	49' (46'6")
30'	W21x101	W21x55	3' (4')	17'6" (14'6")	56'6" (53'6")
35'	W14x120	W21x68	3' (4')	20'6" (17'6")	64'6" (61'6")
40'	W14x145	W24x76	3' (4')	23' (19'6")	72' (68'6")

Column and Foundation Requirements (Based on ASCE 7-10)

Display Height	Unbraced Column	Braced Column*	Pier Dia.	Pier Depth	Column Length
8'	W8x28	W10x22	2' (3')	10' (8'6")	27' (25'6")
10'	W10x33	W10x26	2' (3')	11' (9'6")	30' (28'6")
12'	W10x39	W12x26	2' (3')	12' (10')	33' (31')
14'	W10x45	W14x30	2' (3')	13' (11')	36' (34')
16'	W12x53	W14x34	2' (3')	14'6" (11'6")	39'6" (36'6")
18'	W10x60	W16x40	2' (3')	16' (12'6")	43' (39'6")
20'	W12x65	W14x43	2' (3')	17'6" (13'6")	46'6" (42'6")
22'	W12x72	W14x48	3' (4')	14'6" (12')	45'6" (43')
25'	W12x87	W18x50	3' (4')	16' (13'6")	50' (47'6")
30'	W12x106	W21x62	3' (4')	18'6" (15'6")	57'6" (54'6")
35'	W14x132	W18x76	3' (4')	22' (18'6")	66' (62'6")
40'	W14x159	W24x84	3' (4')	25' (21')	74' (70')

Column and Foundation Requirements (Based on ASCE 7-10)

Display Height	Unbraced Column	Braced Column*	Pier Dia.	Pier Depth	Column Length
8'	W8 x 28	W10 x 22*	2' (3')	10' (8'6")	27' (25'6")
10'	W10 x 33	W10 x 26*	3' (4')	9'6" (8'6")	28'6" (27'6")
12'	W10 x 39	W12 x 26+	3' (4')	10'6" (9')	31'6" (30')
14'	W14 x 48	W14 x 30+	3' (4')	11' (10')	34' (33')
16'	W12 x 53	W14 x 34+	3' (4')	11'6" (10'6")	36'6" (35'6")
18'	W10 x 60	W16 x 40+	3' (4')	12'6" (11')	39'6" (38')
20'	W12 x 65	W14 x 43+	3' (4')	13'6" (12')	42'6" (41')
22'	W12 x 72	W16 x 50+	3' (4')	14'6" (12'6")	45'6" (43'6")
25'	W12 x 87	W18 x 55+	3' (4')	16'6" (13'6")	50'6" (47'6")
30'	W14 x 109	W21 x 62+	3' (4')	19' (16')	58' (55')
35'	W14 x 132	W24 x 68+	3' (4')	21'6" (18')	65'6" (62')
40'	W14 x 159	W24 x 84+	3' (4')	25'6" (21')	74'6" (70')

30 FEET WIDE
INSTALLATIONS
(see note 5)32 FEET WIDE
INSTALLATIONS36 FEET WIDE
INSTALLATIONS

EXPOSURE B (See Note 4)

Column and Foundation Requirements (Based on ASCE 7-10)

Display Height	Unbraced Column	Braced Column*	Pier Dia.	Pier Depth	Column Length
10'	W12x26	W8x21	2' (3')	9' (8')	28' (27')
12'	W10x33	W10x22	2' (3')	10' (8'6")	31' (29'6")
14'	W8x35	W10x26	2' (3')	10'6" (9')	33'6" (32')
16'	W14x43	W12x26	2' (3')	11'6" (10')	36'6" (35')
18'	W14x48	W12x30	2' (3')	12' (10'6")	39' (37'6")
20'	W10x49	W14x30	2' (3')	13' (11')	42' (40')
22'	W10x60	W14x34	3' (4')	11'6" (10')	42'6" (41')
25'	W12x65	W16x40	3' (4')	12' (11')	46' (45')
30'	W12x79	W14x48	3' (4')	14' (12')	53' (51')
35'	W12x106	W21x55	3' (4')	16'6" (14')	60'6" (58')
40'	W14x120	W21x62	3' (4')	19' (16')	68' (65')

Column and Foundation Requirements (Based on ASCE 7-10)

Display Height	Unbraced Column	Braced Column*	Pier Dia.	Pier Depth	Column Length
8'	W8x24	W8x18	2' (3')	9' (7'6")	26' (24'6")
10'	W8x28	W8x21	2' (3')	9'6" (8')	28'6" (27')
12'	W10x33	W14x22	2' (3')	10'6" (9')	31'6" (30')
14'	W10x39	W12x26	2' (3')	11' (9'6")	34' (32'6")
16'	W10x45	W12x26	2' (3')	12' (10')	37' (35')
18'	W10x49	W14x30	2' (3')	12'6" (11')	39'6" (38')
20'	W12x53	W14x34	2' (3')	14' (11'6")	43' (40'6")
22'	W10x60	W16x36	3' (4')	12' (10'6")	43' (41'6")
25'	W12x72	W16x40	3' (4')	13' (11'6")	47' (45'6")
30'	W12x87	W18x50	3' (4')	15' (12'6")	54' (51'6")
35'	W14x109	W21x62	3' (4')	18' (15')	62' (59')
40'	W14x132	W21x68	3' (4')	20'6" (17')	69'6" (66')

Column and Foundation Requirements (Based on ASCE 7-10)

Display Height	Unbraced Column	Braced Column*	Pier Dia.	Pier Depth	Column Length
8'	W8 x 24	W8 x 18*	2' (3')	9' (7'6")	26' (24'6")
10'	W8 x 28	W10 x 22*	3' (4')	8'6" (7'6")	27'6" (26'6")
12'	W10 x 33	W14 x 22+	3' (4')	9' (8')	30' (29')
14'	W10 x 39	W12 x 26+	3' (4')	9'6" (8'6")	32'6" (31'6")
16'	W10 x 45	W12 x 30+	3' (4')	10' (9')	35' (34')
18'	W10 x 49	W14 x 30+	3' (4')	11' (9'6")	38' (36'6")
20'	W12 x 53	W14 x 34+	3' (4')	11'6" (10'6")	40'6" (39'6")
22'	W14 x 61	W16 x 36+	3' (4')	12' (11')	43' (42')
25'	W12 x 72	W14 x 43+	3' (4')	13' (11'6")	47' (45'6")
30'	W12 x 87	W18 x 50+	3' (4')	15'6" (13')	54'6" (52')
35'	W12 x 106	W21 x 55+	3' (4')	17'6" (14'6")	61'6" (58'6")
40'	W14 x 132	W24 x 68+	3' (4')	20'6" (17'6")	69'6" (66'6")

Chart Notes:

1. If the display height is between chart values shown above, use the next highest value.
2. * Requires that braces be placed approximately 10' from ground level spanning both columns. If display is taller than 20' place braces on 10' spacing.
3. Wind loading figured at **Exposure "C" - Open terrain** with scattered obstructions having heights generally less than 30 feet. This category includes flat open country, grasslands, and all water surfaces in hurricane prone areas.
4. Wind loading figured at **Exposure "B" - Urban and suburban areas**, wooded areas, or other terrain with numerous closely spaced obstructions having the size of single-family dwellings or larger. These areas prevail in the upwind direction for a distance of 2600 feet or 20 times the structure height, whichever is greater.
5. For 3604 scoreboard subtract 5' from column length for outer columns.

Outdoor Scoreboard
Pier Installation
4 Column
Multi-SectionNevco, Inc.
Greenville, Illinois 62246

Drawing No. 241-0408

Drawn KAB

Date 12/14/18

Sheet 4 of 7

130 MPH WIND ZONES

Rev

A

EXPOSURE C (See Note 3)

Column and Foundation Requirements (Based on ASCE 7-10)

Display Height	Unbraced Column	Braced Column*	Pier Dia.	Pier Depth	Column Length
10'	W10x33	W10x26	2' (3')	11' (96")	30' (286")
12'	W10x39	W12x30	2' (3')	12' (106")	33' (316")
14'	W14x48	W14x30	2' (3')	136" (11')	366" (34')
16'	W12x53	W18x35	2' (3')	15' (12')	40' (37')
18'	W14x61	W16x40	2' (3')	166" (126")	436" (396")
20'	W12x65	W21x44	2' (3')	176" (14')	466" (43')
22'	W12x72	W16x50	3' (4')	15' (126")	46' (436")
25'	W12x87	W18x55	3' (4')	166" (14')	506" (48')
30'	W14x109	W21x62	3' (4')	19' (16')	58' (55')
35'	W14x132	W24x76	3' (4')	226" (19')	666" (63')
40'	W14x159	W24x94	3' (4')	256" (216")	746" (706")

Column and Foundation Requirements (Based on ASCE 7-10)

Display Height	Unbraced Column	Braced Column*	Pier Dia.	Pier Depth	Column Length
8'	W10x33	W10x26	2' (3')	106" (9')	276" (26')
10'	W10x39	W12x26	2' (3')	116" (10')	306" (29')
12'	W14x43	W12x30	2' (3')	13' (11')	34' (32')
14'	W10x49	W14x34	2' (3')	146" (116")	376" (346")
16'	W12x53	W16x36	2' (3')	16' (126")	41' (376")
18'	W12x65	W14x43	2' (3')	176" (136")	446" (406")
20'	W12x72	W16x50	2' (3')	19' (15')	48' (44')
22'	W12x79	W18x50	3' (4')	16' (136")	47' (446")
25'	W12x96	W21x55	3' (4')	176" (15')	516" (49')
30'	W14x109	W21x68	3' (4')	206" (17')	596" (56')
35'	W14x145	W24x84	3' (4')	246" (206")	686" (646")
40'	W14x176	W24x94	3' (4')	276" (23')	766" (72')

Column and Foundation Requirements (Based on ASCE 7-10)

Display Height	Unbraced Column	Braced Column*	Pier Dia.	Pier Depth	Column Length
8'	W10 x 33	W10 x 26*	2' (3')	11' (9')	28' (26')
10'	W10 x 39	W12 x 26*	3' (4')	10' (9')	29' (28')
12'	W14 x 43	W12 x 30+	3' (4')	11' (10')	32' (31')
14'	W10 x 49	W14 x 34+	3' (4')	116" (106")	346" (336")
16'	W10 x 60	W16 x 36+	3' (4')	126" (11')	376" (36')
18'	W12 x 65	W14 x 43+	3' (4')	136" (12')	406" (39')
20'	W12 x 72	W16 x 50+	3' (4')	15' (126")	44' (416")
22'	W12 x 79	W18 x 50+	3' (4')	16' (136")	47' (446")
25'	W12 x 96	W21 x 55+	3' (4')	18' (15')	52' (49')
30'	W12 x 120	W21 x 68+	3' (4')	21' (176")	60' (566")
35'	W14 x 145	W24 x 76+	3' (4')	24' (20')	68' (64')
40'	W14 x 176	W21 x 101+	3' (4')	28' (236")	77' (726")

30 FEET WIDE
INSTALLATIONS
(see note 5)32 FEET WIDE
INSTALLATIONS36 FEET WIDE
INSTALLATIONS

EXPOSURE B (See Note 4)

Column and Foundation Requirements (Based on ASCE 7-10)

Display Height	Unbraced Column	Braced Column*	Pier Dia.	Pier Depth	Column Length
10'	W8x28	W10x22	2' (3')	96" (86")	286" (276")
12'	W10x33	W10x26	2' (3')	106" (9')	316" (30')
14'	W10x39	W12x26	2' (3')	11' (96")	34' (326")
16'	W10x45	W12x30	2' (3')	12' (106")	37' (356")
18'	W10x49	W14x30	2' (3')	13' (11')	40' (38')
20'	W12x53	W14x34	2' (3')	14' (116")	43' (406")
22'	W14x61	W16x36	3' (4')	12' (11')	43' (42')
25'	W12x72	W14x43	3' (4')	136" (116")	476" (456")
30'	W12x87	W18x50	3' (4')	156" (13')	546" (52')
35'	W14x109	W21x62	3' (4')	186" (156")	626" (596")
40'	W14x132	W24x68	3' (4')	21' (176")	70' (666")

Column and Foundation Requirements (Based on ASCE 7-10)

Display Height	Unbraced Column	Braced Column*	Pier Dia.	Pier Depth	Column Length
8'	W8x24	W8x21	2' (3')	96" (8')	266" (25')
10'	W10x33	W10x22	2' (3')	10' (86")	29' (276")
12'	W8x35	W10x26	2' (3')	11' (96")	32' (306")
14'	W12x40	W12x26	2' (3')	116" (10')	346" (33')
16'	W14x48	W12x30	2' (3')	126" (106")	376" (356")
18'	W12x53	W14x34	2' (3')	14' (116")	41' (386")
20'	W10x60	W16x36	2' (3')	15' (12')	44' (41')
22'	W12x65	W16x40	3' (4')	13' (116")	44' (426")
25'	W12x79	W14x48	3' (4')	146" (12')	486" (46')
30'	W12x96	W18x55	3' (4')	166" (14')	556" (53')
35'	W14x120	W21x68	3' (4')	20' (166")	64' (606")
40'	W14x145	W24x76	3' (4')	226" (19')	716" (68')

Column and Foundation Requirements (Based on ASCE 7-10)

Display Height	Unbraced Column	Braced Column*	Pier Dia.	Pier Depth	Column Length
8'	W8 x 24	W8 x 21*	2' (3')	96" (8')	266" (25')
10'	W10 x 33	W10 x 22*	3' (4')	86" (8')	276" (27')
12'	W8 x 35	W10 x 26+	3' (4')	96" (86")	306" (296")
14'	W14 x 43	W12 x 26+	3' (4')	10' (9')	33' (32')
16'	W14 x 48	W14 x 30+	3' (4')	11' (96")	36' (346")
18'	W12 x 53	W14 x 34+	3' (4')	116" (106")	386" (376")
20'	W10 x 60	W16 x 36+	3' (4')	12' (11')	41' (40')
22'	W12 x 65	W16 x 40+	3' (4')	13' (116")	44' (426")
25'	W12 x 79	W16 x 50+	3' (4')	146" (12')	486" (46')
30'	W12 x 96	W21 x 55+	3' (4')	17' (14')	56' (53')
35'	W14 x 109	W21 x 62+	3' (4')	19' (16')	63' (60')
40'	W14 x 145	W24 x 76+	3' (4')	226" (19')	716" (68')

Chart Notes:

1. If the display height is between chart values shown above, use the next highest value.
2. * Requires that braces be placed approximately 10' from ground level spanning both columns. If display is taller than 20' place braces on 10' spacing.
3. Wind loading figured at **Exposure "C" - Open terrain** with scattered obstructions having heights generally less than 30 feet. This category includes flat open country, grasslands, and all water surfaces in hurricane prone areas.
4. Wind loading figured at **Exposure "B" - Urban and suburban areas**, wooded areas, or other terrain with numerous closely spaced obstructions having the size of single-family dwellings or larger. These areas prevail in the upwind direction for a distance of 2600 feet or 20 times the structure height, whichever is greater.
5. For 3604 scoreboard subtract 5' from column length for outer columns.

Outdoor Scoreboard
Pier Installation
4 Column
Multi-SectionNevco, Inc.
Greenville, Illinois 62246

Drawing No. 241-0408

Drawn

KAB

Date

12/14/18

Sheet

5 of 7

150 MPH WIND ZONES

Rev A

EXPOSURE C (See Note 3)

Column and Foundation Requirements (Based on ASCE 7-10)

Display Height	Unbraced Column	Braced Column*	Pier Dia.	Pier Depth	Column Length
10'	W10x39	W12x30	2' (3')	126" (10'6")	31'6" (29'6")
12'	W14x48	W14x34	3' (4')	116" (10'6")	32'6" (31'6")
14'	W12x53	W16x36	3' (4')	126" (11')	35'6" (34')
16'	W14x61	W14x43	3' (4')	14' (12')	39' (37')
18'	W12x72	W16x50	3' (4')	15' (12'6")	42' (39'6")
20'	W12x79	W18x50	3' (4')	16'6" (14')	45'6" (43')
22'	W12x96	W21x55	3' (4')	17'6" (15')	48'6" (46')
25'	W21x101	W21x62	3' (4')	19'6" (16'6")	53'6" (50'6")
30'	W24x131	W24x68	3' (4')	23' (19')	62' (58')
35'	W14x159	W24x94	3' (4')	27'6" (22'6")	71'6" (66'6")
40'	W14x193	W24x104	3' (4')	30'6" (25'6")	79'6" (74'6")

Column and Foundation Requirements (Based on ASCE 7-10)

Display Height	Unbraced Column	Braced Column*	Pier Dia.	Pier Depth	Column Length
8'	W16x36	W12x26	2' (3')	12' (10'6")	29' (27'6")
10'	W12x40	W14x30	2' (3')	13'6" (11')	32'6" (30')
12'	W10x49	W18x35	2' (3')	15'6" (12')	36'6" (33')
14'	W10x60	W16x40	2' (3')	17'6" (13'6")	40'6" (36'6")
16'	W12x65	W21x44	2' (3')	19' (15')	44' (40')
18'	W14x74	W18x50	3' (4')	16'6" (13'6")	43'6" (40'6")
20'	W18x86	W18x55	3' (4')	18' (15')	47' (44')
22'	W12x96	W21x62	3' (4')	19' (16')	50' (47')
25'	W14x109	W21x68	3' (4')	21' (17'6")	55' (51'6")
30'	W18x143	W24x76	3' (4')	24'6" (20'6")	63'6" (59'6")
35'	W14x176	W21x101	3' (4')	29'6" (24'6")	73'6" (68'6")
40'	W14x211	W24x117	3' (4')	33'6" (27'6")	82'6" (76'6")

Column and Foundation Requirements (Based on ASCE 7-10)

Display Height	Unbraced Column	Braced Column*	Pier Dia.	Pier Depth	Column Length
8'	W16 x 36	W12 x 26*	2' (3')	12' (10'6")	29' (27'6")
10'	W14 x 43	W14 x 30*	3' (4')	11' (10')	30' (29')
12'	W10 x 49	W18 x 35+	3' (4')	12' (11')	33' (32')
14'	W10 x 60	W16 x 40+	3' (4')	13'6" (11'6")	36'6" (34'6")
16'	W12 x 65	W21 x 44+	3' (4')	15' (12'6")	40' (37'6")
18'	W14 x 74	W18 x 50+	3' (4')	16'6" (13'6")	43'6" (40'6")
20'	W18 x 86	W21 x 55+	3' (4')	18' (15')	47' (44')
22'	W18 x 97	W21 x 62+	3' (4')	19'6" (16')	50'6" (47')
25'	W14 x 109	W21 x 68+	3' (4')	21'6" (18')	55'6" (52')
30'	W18 x 143	W24 x 84+	3' (4')	25' (21')	64' (60')
35'	W18 x 175	W21 x 101+	3' (4')	28'6" (23'6")	72'6" (67'6")
40'	W14 x 233	W24 x 117+	3' (4')	34' (28')	83' (77')

30 FEET WIDE
INSTALLATIONS
(see note 5)

32 FEET WIDE
INSTALLATIONS

36 FEET WIDE
INSTALLATIONS

EXPOSURE B (See Note 4)

Column and Foundation Requirements (Based on ASCE 7-10)

Display Height	Unbraced Column	Braced Column*	Pier Dia.	Pier Depth	Column Length
10'	W10x33	W10x26	2' (3')	11' (7'6")	31' (29'6")
12'	W10x39	W12x26	2' (3')	11'6" (8'6")	33'6" (32')
14'	W10x45	W12x30	2' (3')	12'6" (9')	36'6" (34'6")
16'	W10x49	W14x34	2' (3')	14' (9'6")	40' (37'6")
18'	W10x60	W16x36	2' (3')	15'6" (10')	43'6" (40')
20'	W12x65	W16x40	2' (3')	17' (10'6")	47' (43')
22'	W12x72	W21x44	2' (3')	18' (11')	50' (46')
25'	W18x86	W18x50	2' (3')	20'6" (12')	55'6" (51')
30'	W12x106	W21x62	2' (3')	23'6" (12')	63'6" (58'6")
35'	W14x132	W24x68	3' (4')	22' (13'6")	67' (63'6")
40'	W14x159	W24x84	3' (4')	25' (13'6")	75' (71')

Column and Foundation Requirements (Based on ASCE 7-10)

Display Height	Unbraced Column	Braced Column*	Pier Dia.	Pier Depth	Column Length
8'	W12x30	W10x22	2' (3')	10'6" (9')	28'6" (27')
10'	W10x33	W12x26	2' (3')	11'6" (9'6")	31'6" (29'6")
12'	W12x40	W12x30	2' (3')	12' (10'6")	34' (32'6")
14'	W14x48	W14x34	2' (3')	13'6" (11')	37'6" (35')
16'	W12x53	W18x35	2' (3')	15' (12')	41' (38')
18'	W14x61	W16x40	2' (3')	17' (13')	45' (41')
20'	W12x65	W21x44	2' (3')	18' (14')	48' (44')
22'	W12x79	W16x50	2' (3')	19'6" (15'6")	51'6" (47'6")
25'	W12x96	W18x55	2' (3')	22' (17')	57' (52')
30'	W14x109	W21x62	3' (4')	20' (16'6")	60' (56'6")
35'	W14x145	W24x76	3' (4')	24' (20')	69' (65')
40'	W14x176	W24x94	3' (4')	27' (22'6")	77' (72'6")

Column and Foundation Requirements (Based on ASCE 7-10)

Display Height	Unbraced Column	Braced Column*	Pier Dia.	Pier Depth	Column Length
8'	W12x30	W10x22	2' (3')	10'6" (9')	28'6" (27')
10'	W10x33	W12x26	2' (3')	11'6" (9'6")	31'6" (29'6")
12'	W12x40	W12x30	2' (3')	12'6" (10'6")	34'6" (32'6")
14'	W14x48	W14x34	2' (3')	13'6" (11'6")	37'6" (35'6")
16'	W12x53	W16x36	2' (3')	15' (12')	41' (38')
18'	W14x61	W16x40	2' (3')	16'6" (13')	44'6" (41')
20'	W12x72	W21x44	2' (3')	18'6" (14'6")	48'6" (44'6")
22'	W12x79	W18x50	3' (4')	15'6" (13')	47'6" (45')
25'	W12x96	W18x55	3' (4')	17' (14'6")	52' (49'6")
30'	W14x109	W21x68	3' (4')	20' (17')	60' (57')
35'	W14x145	W24x76	3' (4')	23' (19')	68' (64')
40'	W14x176	W24x94	3' (4')	27' (22')	77' (72'6")

Chart Notes:

1. If the display height is between chart values shown above, use the next highest value.
2. * Requires that braces be placed approximately 10' from ground level spanning both columns. If display is taller than 20' place braces on 10' spacing.
3. Wind loading figured at **Exposure "C" - Open terrain** with scattered obstructions having heights generally less than 30 feet. This category includes flat open country, grasslands, and all water surfaces in hurricane prone areas.
4. Wind loading figured at **Exposure "B" - Urban and suburban areas**, wooded areas, or other terrain with numerous closely spaced obstructions having the size of single-family dwellings or larger. These areas prevail in the upwind direction for a distance of 2600 feet or 20 times the structure height, whichever is greater.
5. For 3604 scoreboard subtract 5' from column length for outer columns.

Outdoor Scoreboard
Pier Installation
4 Column
Multi-Section



Nevco, Inc.
Greenville, Illinois 62246

Drawing No. 241-0408

Drawn KAB Date 12/14/18

Sheet 6 of 7

180 MPH WIND ZONES

Rev

A

EXPOSURE C (See Note 3)

Column and Foundation Requirements (Based on ASCE 7-10)

Display Height	Unbraced Column	Braced Column*	Pier Dia.	Pier Depth	Column Length
10'	W14x48	W18x35	2' (3')	16' (126")	35' (31'6")
12'	W10x60	W16x40	3' (4')	14' (12')	35' (33')
14'	W12x65	W16x50	3' (4')	15'6" (13')	38'6" (36')
16'	W18x76	W18x55	3' (4')	17'6" (14'6")	42'6" (39'6")
18'	W18x86	W21x55	3' (4')	19' (16')	46' (43')
20'	W18x97	W21x62	3' (4')	20'6" (17')	49'6" (46')
22'	W24x104	W21x68	3' (4')	22'6" (18'6")	53'6" (49'6")
25'	W18x130	W24x76	3' (4')	25' (20'6")	59' (54'6")
30'	W14x159	W24x94	3' (4')	29' (24')	68' (63')
35'	W21x201	W24x117	3' (4')	35' (28'6")	79' (72'6")
40'	W14x257	W24x146	3' (4')	39' (32'6")	88' (81'6")

Column and Foundation Requirements (Based on ASCE 7-10)

Display Height	Unbraced Column	Braced Column*	Pier Dia.	Pier Depth	Column Length
8'	W14x43	W14x34	2' (3')	15' (12')	32' (29')
10'	W12x53	W16x40	2' (3')	17' (13')	36' (32')
12'	W14x61	W21x44	2' (3')	19'6" (15')	40'6" (36')
14'	W16x67	W18x50	2' (3')	22' (17')	45' (40')
16'	W18x76	W21x55	2' (3')	24'6" (18'6")	49'6" (43'6")
18'	W18x97	W21x62	3' (4')	21' (17')	48' (44')
20'	W21x101	W21x68	3' (4')	22'6" (18'6")	51'6" (47'6")
22'	W21x111	W18x76	3' (4')	24'6" (20')	55'6" (51')
25'	W24x131	W24x84	3' (4')	27' (22'6")	61' (56'6")
30'	W18x175	W24x103	3' (4')	31'6" (26')	70'6" (65')
35'	W14x233	W24x131	3' (4')	38' (31')	82' (75')
40'	W14x283	W24x162	3' (4')	42'6" (35')	91'6" (84')

Column and Foundation Requirements (Based on ASCE 7-10)

Display Height	Unbraced Column	Braced Column*	Pier Dia.	Pier Depth	Column Length
8'	W14 x 43	W14 x 34*	2' (3')	15' (12')	32' (29')
10'	W12 x 53	W16 x 40*	3' (4')	13'6" (11'6")	32'6" (30'6")
12'	W14 x 61	W21 x 44+	3' (4')	15' (12'6")	36' (33'6")
14'	W16 x 67	W18 x 50+	3' (4')	17' (14')	40' (37')
16'	W18 x 76	W21 x 55+	3' (4')	19' (15'6")	44' (40'6")
18'	W12 x 96	W21 x 62+	3' (4')	20'6" (17')	47'6" (44')
20'	W21 x 101	W21 x 68+	3' (4')	23' (19')	52' (48')
22'	W24 x 117	W24 x 76+	3' (4')	24'6" (20'6")	55'6" (51'6")
25'	W18 x 143	W24 x 84+	3' (4')	27'6" (22'6")	61'6" (56'6")
30'	W14 x 176	W24 x 104+	3' (4')	32' (26'6")	71' (65'6")
35'	W14 x 233	W24 x 131+	3' (4')	36'6" (30')	80'6" (74')
40'	W14 x 283	W24 x 162+	3' (4')	43'6" (35'6")	92'6" (84'6")

Chart Notes:

1. If the display height is between chart values shown above, use the next highest value.
2. * Requires that braces be placed approximately 10' from ground level spanning both columns. If display is taller than 20' place braces on 10' spacing.
3. Wind loading figured at **Exposure "C" - Open terrain** with scattered obstructions having heights generally less than 30 feet. This category includes flat open country, grasslands, and all water surfaces in hurricane prone areas.
4. Wind loading figured at **Exposure "B" - Urban and suburban areas**, wooded areas, or other terrain with numerous closely spaced obstructions having the size of single-family dwellings or larger. These areas prevail in the upwind direction for a distance of 2600 feet or 20 times the structure height, whichever is greater.
5. For 3604 scoreboard subtract 5' from column length for outer columns.

EXPOSURE B (See Note 4)

Column and Foundation Requirements (Based on ASCE 7-10)

Display Height	Unbraced Column	Braced Column*	Pier Dia.	Pier Depth	Column Length
10'	W10x39	W12x30	2' (3')	12'6" (10'6")	31'6" (29'6")
12'	W14x48	W14x34	3' (4')	11'6" (10'6")	32'6" (31'6")
14'	W12x53	W16x36	3' (4')	12'6" (11')	35'6" (34')
16'	W14x61	W14x43	3' (4')	14' (12')	39' (37')
18'	W14x68	W16x50	3' (4')	15' (12'6")	42' (39'6")
20'	W12x79	W18x50	3' (4')	16'6" (14')	45'6" (43')
22'	W12x96	W21x55	3' (4')	18' (15')	49' (46')
25'	W21x101	W21x62	3' (4')	20' (16'6")	54' (50'6")
30'	W24x131	W18x76	3' (4')	23' (19')	62' (58')
35'	W18x175	W24x94	3' (4')	28' (23')	72' (67')
40'	W21x201	W24x104	3' (4')	31'6" (26')	80'6" (75')

Column and Foundation Requirements (Based on ASCE 7-10)

Display Height	Unbraced Column	Braced Column*	Pier Dia.	Pier Depth	Column Length
8'	W10x33	W12x26	2' (3')	12' (10')	29' (27')
10'	W12x40	W14x30	2' (3')	13'6" (11')	32'6" (30')
12'	W10x49	W18x35	2' (3')	15'6" (12')	36'6" (33')
14'	W10x60	W16x40	2' (3')	17' (13'6")	40' (36'6")
16'	W12x65	W21x44	2' (3')	19' (14'6")	44' (39'6")
18'	W14x74	W18x50	3' (4')	16'6" (13'6")	43'6" (40'6")
20'	W18x86	W18x55	3' (4')	17'6" (15')	46'6" (44')
22'	W12x96	W21x62	3' (4')	19' (16')	50' (47')
25'	W14x109	W21x68	3' (4')	21'6" (18')	55'6" (52')
30'	W18x143	W24x84	3' (4')	25' (21')	64' (60')
35'	W21x182	W21x101	3' (4')	30' (25')	74' (69')
40'	W14x233	W24x117	3' (4')	34' (28')	83' (77')

Column and Foundation Requirements (Based on ASCE 7-10)

Display Height	Unbraced Column	Braced Column*	Pier Dia.	Pier Depth	Column Length
8'	W16 x 36	W12 x 26*	2' (3')	12' (10')	29' (27')
10'	W12 x 40	W14 x 30*	3' (4')	11' (10')	30' (29')
12'	W10 x 49	W18 x 35+	3' (4')	12' (11')	33' (32')
14'	W10 x 60	W16 x 40+	3' (4')	13'6" (11'6")	36'6" (34'6")
16'	W12 x 65	W21 x 44+	3' (4')	15' (12'6")	40' (37'6")
18'	W14 x 74	W18 x 50+	3' (4')	16'6" (13'6")	43'6" (40'6")
20'	W18 x 86	W21 x 55+	3' (4')	18' (15')	47' (44')
22'	W18 x 97	W21 x 62+	3' (4')	19'6" (16')	50'6" (47')
25'	W14 x 109	W21 x 68+	3' (4')	21'6" (18')	55'6" (52')
30'	W18 x 143	W24 x 84+	3' (4')	25'6" (21')	64'6" (60')
35'	W14 x 176	W21 x 101+	3' (4')	29' (24')	73' (68')
40'	W14 x 233	W24 x 117+	3' (4')	34'6" (28'6")	83'6" (77'6")

Outdoor Scoreboard
Pier Installation
4 Column
Multi-Section



Nevco, Inc.
Greenville, Illinois 62246

Drawing No. 241-0408

Drawn KAB

Date 12/14/18

Sheet 7 of 7