

Additional display area consisting of signs, arches, message centers or video above or below the scoreboard. (see sheets 2-4) for column and pier sizing)

WIDTH

HEIGHT

OVERALL  
DISPLAY  
HEIGHT

A

B

B

B

A

10'  
Approx

Concrete must  
slope away from  
columns.

Steel Column  
See Sheets 2-4

Ground Level

Pier Depth  
See Sheets 2-4

Pier Diameter  
See Sheets 2-4

Check electrical prints to determine  
conduit sizes. (must meet code)

Coarse aggregate concrete  
(fc = 2500 psi)

DIMENSIONS AND SPECIFICATIONS

Model	WIDTH	HEIGHT	WEIGHT	WEIGHT W/ETN	DIM "A"	DIM "B"
3604	30'	10' 3/16"	630 lbs	692 lbs	3'	8'
3620 7620	32'	8' 3/16"	760 lbs	822 lbs	4'	8'
3657	32'	10' 3/16"	890 lbs	952 lbs	4'	8'
3688 7688	32'	8' 3/16"	N/A	930 lbs	4'	8'
1603 1603PC	36'	9' 3/16"	930 lbs	992 lbs	3'	10'
3616 7616	36'	10' 3/16"	1020 lbs	1220 lbs	3'	10'

- General Notes:
1. Column steel to be grade A992 (50 ksi steel minimum).
  2. Bracing steel to be ASTM A500 Grade B minimum (see note 1 on sheets 4-6).
  3. Minimum bolt grade: A307
  4. All welds to conform to AWS standards
  5. The dimensions in the charts on sheets 4-6 are calculated using the requirements specified in IBC 2009, and the Manual of Steel Construction (13th Edition). Soil lateral bearing pressure is considered to be 150 psf/f.
  6. The weights of signs to be calculated using 4.3 lb/sq. ft of sign area.
  7. The weights of Nevco message centers to be calculated using 8.5 lb/sq ft.
  8. The weights of Nevco video displays to be calculated using 9.5 lbs/sq. ft.
  9. The weights of Nevco arches to be calculated using 7.7 lbs/sq. ft.

Important. Read before installation.

This is not an engineered drawing. It is intended for representational purposes only. The dimensions called out on this drawing are intended to be used as a guide only, and are not intended to be suitable for all conditions. Adding signs or other components around the scoreboard beyond the scope of this drawing or increasing the display height from the ground will affect the installation requirements. Nevco recommends that you consult a professional engineer or architect familiar with the area before attempting installation. They can verify that the selected mounting beams or posts along with the brackets, screws, and other hardware items provided by others or Nevco are adequate for your local soil conditions, wind loads and other local codes. If procedures are used that are not covered in this drawing, careful analysis of the installation is urged.

Outdoor Scoreboard  
Installation  
4 Column  
Multi-Section



Nevco, Inc.  
Greenville, Illinois 62246

Drawing No. 241-0365

Drawn WHP

Date 12/14/18

Sheet 1 of 7

## 90 MPH WIND ZONES

## Exposure C

### 30 FEET WIDE INSTALLATIONS

Column and Pier Requirements (Based on ASCE 7-05)					
Display Height	Pier Dia	Pier Depth	Col Length	Unbraced Colu	Braced Column
10	2' (3')	10'6" (9')	30'6" (29')	W10 x 33	W10 x 22
12	2' (3')	11' (9'6")	33' (31'6")	W10 x 39	W10 x 26
14	2' (3')	12' (10')	36' (34')	W14 x 43	W12 x 30
16	2' (3')	13' (11')	39' (37')	W10 x 49	W14 x 30
18	2' (3')	14' (11'6")	42' (39'6")	W12 x 53	W14 x 34
20	2' (3')	15'6" (12')	45'6" (42')	W10 x 60	W16 x 36
22	2' (3')	16'6" (13')	48'6" (45')	W12 x 65	W16 x 40
25	2' (3')	18'6" (14'6")	53'6" (49'6")	W12 x 79	W14 x 48
30	2' (3')	21'6" (16'6")	61'6" (56'6")	W12 x 96	W18 x 55
35	3' (4')	20' (16'6")	65' (61'6")	W14 x 120	W21 x 68
40	3' (4')	22' (18'6")	72' (68'6")	W14 x 145	W24 x 76

## Exposure C

### 32 FEET WIDE INSTALLATIONS

Column and Pier Requirements (Based on ASCE 7-05 Exposure C for 90mph Wind Load)					
Display Height	Pier Dia	Pier Depth	Col Length	Unbraced Column	Braced Column *
8	2' (3')	10' (8'6")	28' (26'6")	W8 x 28	W10 x 22
10	2' (3')	11' (9'6")	31' (29'6")	W10 x 33	W10 x 26
12	2' (3')	11'6" (10')	33'6" (32')	W10 x 39	W12 x 26
14	2' (3')	12'6" (10'6")	36'6" (34'6")	W10 x 45	W12 x 30
16	2' (3')	14' (11'6")	40' (37'6")	W10 x 49	W14 x 34
18	2' (3')	15'6" (12')	43'6" (40')	W10 x 60	W16 x 36
20	2' (3')	16'6" (13')	46'6" (43')	W12 x 65	W16 x 40
22	2' (3')	18' (14')	50' (46')	W12 x 72	W21 x 44
25	2' (3')	20' (15'6")	55' (50'6")	W12 x 79	W18 x 50
30	3' (4')	18' (15')	58' (55')	W24 x 104	W21 x 55
35	3' (4')	21'6" (18')	66'6" (63')	W14 x 132	W24 x 68
40	3' (4')	24' (20')	74' (70')	W14 x 159	W24 x 84

## Exposure C

### 36 FEET WIDE INSTALLATIONS

Column and Pier Requirements (Based on ASCE 7-05 Exposure C for 90mph Wind Load)					
Display Height	Pier Dia	Pier Depth	Col Length	Unbraced Column	Braced Column *
8	2'	10'6"	28'6"	W12 x 30	W14 x 22
10	2'	11'6"	31'6"	W14 x 38	W12 x 26
12	2' (3')	12'6" (11')	34'6" (33')	W14 x 43	W12 x 30
14	2' (3')	14' (11'6")	38' (35'6")	W10 x 49	W14 x 34
16	2' (3')	15'6" (12')	41'6" (38')	W12 x 53	W16 x 36
18	2' (3')	17' (13'6")	45' (41'6")	W14 x 61	W16 x 40
20	2' (3')	19' (14'6")	49' (44'6")	W12 x 72	W14 x 48
22	3' (4')	16' (13'6")	48' (45'6")	W12 x 79	W18 x 50
25	3' (4')	17'6" (14'6")	52'6" (49'6")	W12 x 96	W21 x 55
30	3' (4')	20'6" (17')	60'6" (57')	W14 x 109	W21 x 68
35	3' (4')	23' (19'6")	68' (64'6")	W14 x 145	W24 x 76
40	3' (4')	27'6" (23')	77'6" (73')	W14 x 176	W24 x 94

### Chart Notes:

1. \* Requires that braces be placed every 10' interval from ground level that spans all columns. See detail on sheet 5.
2. Wind loading figured at **Exposure "C" - Open terrain** with scattered obstructions having heights generally less than 30 feet. This category includes flat open country, grasslands, and all water surfaces in hurricane prone areas.
3. Wind loading figured at **Exposure "B" - Urban and suburban areas**, wooded areas, or other terrain with numerous closely spaced obstructions having the size of single-family dwellings or larger. These areas prevail in the upwind direction for a distance of 2600 feet or 20 times the structure height, whichever is greater.

## Exposure B

### 30 FEET WIDE INSTALLATIONS

Display Height	Pier Dia	Pier Depth	Col Length	Unbraced Column	Braced Column
10	2' (3')	9' (7'6")	29' (27'6")	W12 x 26	W8 x 21
12	2' (3')	9'6" (8'6")	31'6" (30'6")	W10 x 33	W10 x 22
14	2' (3')	10'6" (9')	34'6" (33')	W10 x 33	W14 x 22
16	2' (3')	11' (9'6")	37' (35'6")	W10 x 39	W12 x 26
18	2' (3')	11'6" (10')	39'6" (38')	W10 x 45	W12 x 30
20	2' (3')	12'6" (10'6")	42'6" (40'6")	W10 x 49	W12 x 30
22	2' (3')	13'6" (11')	45'6" (43')	W12 x 53	W14 x 34
25	2' (3')	15' (12')	50' (47')	W12 x 65	W16 x 36
30	2' (3')	17' (13'6")	57' (53'6")	W12 x 79	W21 x 44
35	3' (4')	16' (13'6")	61' (58'6")	W12 x 106	W18 x 55
40	3' (4')	18' (15'6")	68' (65'6")	W12 x 120	W21 x 62

## Exposure B

### 32 FEET WIDE INSTALLATIONS

Column and Pier Requirements (Based on ASCE 7-05 Exposure B for 90mph Wind Load)					
Display Height	Pier Dia.	Pier Depth	Col. Len.	Unbraced Column	Braced Column *
8	2' (3')	8'6" (7'6")	26'6" (25'6")	W8 x 24	W8 x 18
10	2' (3')	9'6" (8')	29'6" (28')	W8 x 28	W8 x 21
12	2' (3')	10' (8'6")	32' (30'6")	W10 x 33	W10 x 22
14	2' (3')	11' (9'6")	35' (33'6")	W10 x 39	W10 x 26
16	2' (3')	11'6" (10')	37'6" (36')	W14 x 43	W12 x 26
18	2' (3')	12'6" (10'6")	40'6" (38'6")	W10 x 49	W12 x 30
20	2' (3')	13'6" (11')	43'6" (41')	W12 x 53	W14 x 34
22	2' (3')	14'6" (11'6")	46'6" (43'6")	W10 x 60	W18 x 35
25	2' (3')	16' (12'6")	51' (47'6")	W12 x 65	W16 x 40
30	3' (4')	14'6" (12'6")	54'6" (52'6")	W12 x 87	W16 x 50
35	3' (4')	17'6" (14'6")	62'6" (59'6")	W12 x 106	W21 x 55
40	3' (4')	19'6" (16'6")	69'6" (66'6")	W14 x 120	W21 x 68

## Exposure B

### 36 FEET WIDE INSTALLATIONS

Display Height	Pier Dia	Pier Depth	Col Len	Unbraced Column	Braced Column *
8	2'	9'	27'	W8 x 24	W8 x 21
10	2'	10'	30'	W10 x 33	W10 x 22
12	2' (3')	11' (9'6")	33' (31'6")	W10 x 33	W10 x 26
14	2' (3')	11'6" (10')	35'6" (34')	W10 x 39	W12 x 26
16	2' (3')	12'6" (10'6")	38'6" (36'6")	W14 x 48	W12 x 30
18	2' (3')	13'6" (11'6")	41'6" (39'6")	W12 x 53	W14 x 34
20	2' (3')	15' (12')	45' (42')	W10 x 60	W16 x 36
22	3' (4')	12'6" (11'6")	44'6" (43'6")	W12 x 65	W16 x 40
25	3' (4')	14' (12')	49' (47')	W12 x 72	W21 x 44
30	3' (4')	16'6" (14')	56'6" (54')	W12 x 96	W18 x 55
35	3' (4')	19' (16')	64' (61')	W14 x 109	W21 x 62
40	3' (4')	22' (18'6")	72' (68'6")	W14 x 145	W24 x 76

Outdoor Scoreboard  
Installation  
4 Column  
Multi-Section



**Nevco, Inc.**  
**Greenville, Illinois 62246**

Drawing No. 241-0365

Drawn WHP

Date 12/14/18

Sheet 2 of 7





4

3

2

1

Rev

B

Exposure C

150 MPH WIND ZONES

Exposure B

30 FEET WIDE INSTALLATIONS

30 FEET WIDE INSTALLATIONS

Column and Pier Requirements (Based on ASCE 7-05)					
Display Height	Pier Dia	Pier Depth	Col Length	Unbraced Column	Braced Column
10	2' (3')	17'6" (13'6")	37'6" (33'6")	W12 x 53	W14 x 30
12	3' (4')	15'6" (13')	37'6" (35')	W14 x 61	W18 x 35
14	3' (4')	17' (14'6")	41' (38'6")	W16 x 67	W16 x 40
16	3' (4')	19'6" (16')	45'6" (42')	W18 x 86	W16 x 50
18	3' (4')	21' (17'6")	49' (45'6")	W18 x 97	W18 x 50
20	3' (4')	23' (19')	53' (49')	W21 x 101	W21 x 55
22	3' (4')	24'6" (20'6")	56'6" (52'6")	W24 x 117	W21 x 62
25	3' (4')	27'6" (22'6")	62'6" (57'6")	W18 x 143	W21 x 68
30	3' (4')	32' (26'6")	72' (66'6")	W14 x 176	W24 x 84
35	3' (4')	38'6" (31'6")	83'6" (76'6")	W14 x 233	W24 x 104
40	3' (4')	43'6" (35'6")	93'6" (85'6")	W14 x 283	W24 x 117

Column and Pier Requirements (Based on ASCE 7-05)					
Display Height	Pier Dia	Pier Depth	Col Length	Unbraced Column	Braced Column
10	2' (3')	13'6" (11')	33'6" (31')	W12 x 40	W16 x 40
12	3' (4')	12' (11')	34' (33')	W10 x 49	W21 x 44
14	3' (4')	13'6" (11'6")	37'6" (35'6")	W10 x 60	W18 x 50
16	3' (4')	15' (12'6")	41' (38'6")	W12 x 65	W21 x 55
18	3' (4')	16'6" (14')	44'6" (42')	W18 x 76	W21 x 62
20	3' (4')	18' (15')	48' (45')	W18 x 86	W24 x 68
22	3' (4')	19'6" (16'6")	51'6" (48'6")	W18 x 97	W24 x 76
25	3' (4')	21'6" (18')	56'6" (53')	W14 x 109	W24 x 84
30	3' (4')	25'6" (21')	65'6" (61')	W14 x 145	W24 x 104
35	3' (4')	30'6" (25'6")	75'6" (70'6")	W21 x 182	W24 x 131
40	3' (4')	34'6" (28'6")	84'6" (78'6")	W14 x 233	W24 x 162

Exposure C

32 FEET WIDE INSTALLATIONS

Exposure B

32 FEET WIDE INSTALLATIONS

32 FEET WIDE INSTALLATIONS

Column and Pier Requirements (Based on ASCE 7-05)					
Display Height	Pier Dia	Pier Depth	Col Length	Unbraced Column	Braced Column *
8	2' (3')	16'6" (12'6")	34'6" (30'6")	W14 x 48	W18 x 35
10	2' (3')	19' (14'6")	39' (34'6")	W10 x 60	W14 x 43
12	2' (3')	21'6" (16'6")	43'6" (38'6")	W12 x 65	W16 x 50
14	2' (3')	24'6" (18'6")	48'6" (42'6")	W18 x 76	W18 x 55
16	2' (3')	27' (20'6")	53' (46'6")	W18 x 86	W21 x 62
18	3' (4')	23' (19')	51' (47')	W21 x 101	W21 x 68
20	3' (4')	25' (20'6")	55' (50'6")	W24 x 104	W24 x 76
22	3' (4')	27' (22')	59' (54')	W21 x 122	W24 x 84
25	3' (4')	30' (24'6")	65' (59'6")	W24 x 146	W24 x 94
30	3' (4')	34'6" (28'6")	74'6" (68'6")	W21 x 182	W24 x 117
35	3' (4')	42' (34'6")	87' (79'6")	W14 x 257	W24 x 146
40	3' (4')	47'6" (38'6")	97'6" (88'6")	W14 x 311	W24 x 192

Column and Pier Requirements (Based on ASCE 7-05)					
Display Height	Pier Dia.	Pier Depth	Col. Len.	Unbraced Column	Braced Column *
8	2' (3')	12'6" (10'6")	30'6" (28'6")	W10 x 39	W12 x 30
10	2' (3')	14'6" (11'6")	34'6" (31'6")	W14 x 43	W14 x 34
12	2' (3')	17' (13')	39' (35')	W12 x 53	W16 x 40
14	2' (3')	19' (14'6")	43' (38'6")	W14 x 61	W21 x 44
16	2' (3')	21' (16')	47' (42')	W16 x 67	W18 x 50
18	3' (4')	18' (15')	46' (43')	W18 x 86	W18 x 55
20	3' (4')	19'6" (16')	49'6" (46')	W12 x 96	W21 x 62
22	3' (4')	21' (17'6")	53' (49'6")	W21 x 101	W21 x 68
25	3' (4')	23'6" (19'6")	58'6" (54'6")	W24 x 117	W24 x 68
30	3' (4')	27'6" (23')	67'6" (63')	W18 x 158	W24 x 94
35	3' (4')	33' (27'6")	78' (72'6")	W21 x 201	W24 x 117
40	3' (4')	37'6" (31')	87'6" (81')	W14 x 257	W24 x 131

Exposure C

36 FEET WIDE INSTALLATIONS

Exposure B

36 FEET WIDE INSTALLATIONS

36 FEET WIDE INSTALLATIONS

Column and Pier Requirements (Based on ASCE 7-05)					
Display Height	Pier Dia	Pier Depth	Col Length	Unbraced Column	Braced Column *
8	2' (3')	18'6" (14')	36'6" (32')	W12 x 53	W16 x 40
10	3' (4')	16'6" (13'6")	36'6" (33'6")	W14 x 61	W16 x 50
12	3' (4')	19' (15'6")	41' (37'6")	W14 x 74	W18 x 55
14	3' (4')	21' (17'6")	45' (41'6")	W18 x 86	W21 x 62
16	3' (4')	23'6" (19'6")	49'6" (45'6")	W18 x 97	W21 x 68
18	3' (4')	26' (21')	54' (49')	W21 x 101	W24 x 76
20	3' (4')	28'6" (23'6")	58'6" (53'6")	W24 x 117	W24 x 84
22	3' (4')	31' (25'6")	63' (57'6")	W24 x 146	W24 x 94
25	3' (4')	34'6" (28')	69'6" (63')	W24 x 162	W24 x 104
30	3' (4')	40' (33')	80' (73')	W24 x 207	W24 x 131
35	3' (4')	46' (37'6")	91' (82'6")	W18 x 283	W24 x 176
40	3' (4')	55' (44'6")	105' (94'6")	W14 x 370	W18 x 283

Column and Pier Requirements (Based on ASCE 7-05)					
Display Height	Pier Dia	Pier Depth	Col Len	Unbraced Colum	Braced Column *
8	2' (3')	14'6" (11'6")	32'6" (29'6")	W12 x 40	W14 x 34
10	3' (4')	13' (11'6")	33' (31'6")	W12 x 53	W16 x 36
12	3' (4')	14'6" (12'6")	36'6" (34'6")	W14 x 61	W21 x 44
14	3' (4')	16'6" (14')	40'6" (38')	W16 x 67	W18 x 50
16	3' (4')	18'6" (15')	44'6" (41')	W18 x 76	W18 x 55
18	3' (4')	20' (16'6")	48' (44'6")	W18 x 86	W21 x 62
20	3' (4')	22'6" (18'6")	52'6" (48'6")	W21 x 101	W21 x 68
22	3' (4')	24' (20')	56' (52')	W21 x 111	W18 x 76
25	3' (4')	27' (22'6")	62' (57'6")	W24 x 131	W24 x 84
30	3' (4')	31'6" (26')	71'6" (66')	W18 x 175	W24 x 104
35	3' (4')	36'6" (30')	81'6" (75')	W14 x 233	W24 x 131
40	3' (4')	43'6" (35'6")	93'6" (85'6")	W14 x 283	W24 x 162

Chart Notes:

1. \* Requires that braces be placed every 10' interval from ground level that spans all columns. See detail on sheet 5.

2. Wind loading figured at **Exposure "C" - Open terrain** with scattered obstructions having heights generally less than 30 feet. This category includes flat open country, grasslands, and all water surfaces in hurricane prone areas.

3. Wind loading figured at **Exposure "B" - Urban and suburban areas**, wooded areas, or other terrain with numerous closely spaced obstructions having the size of single-family dwellings or larger. These areas prevail in the upwind direction for a distance of 2600 feet or 20 times the structure height, whichever is greater.

Outdoor Scoreboard Installation

4 Column Multi-Section

NEVCO

Nevco, Inc.  
Greenville, Illinois 62246

Drawing No. 241-0365

Sheet 4 of 7

Drawn WHP

Date 12/14/18

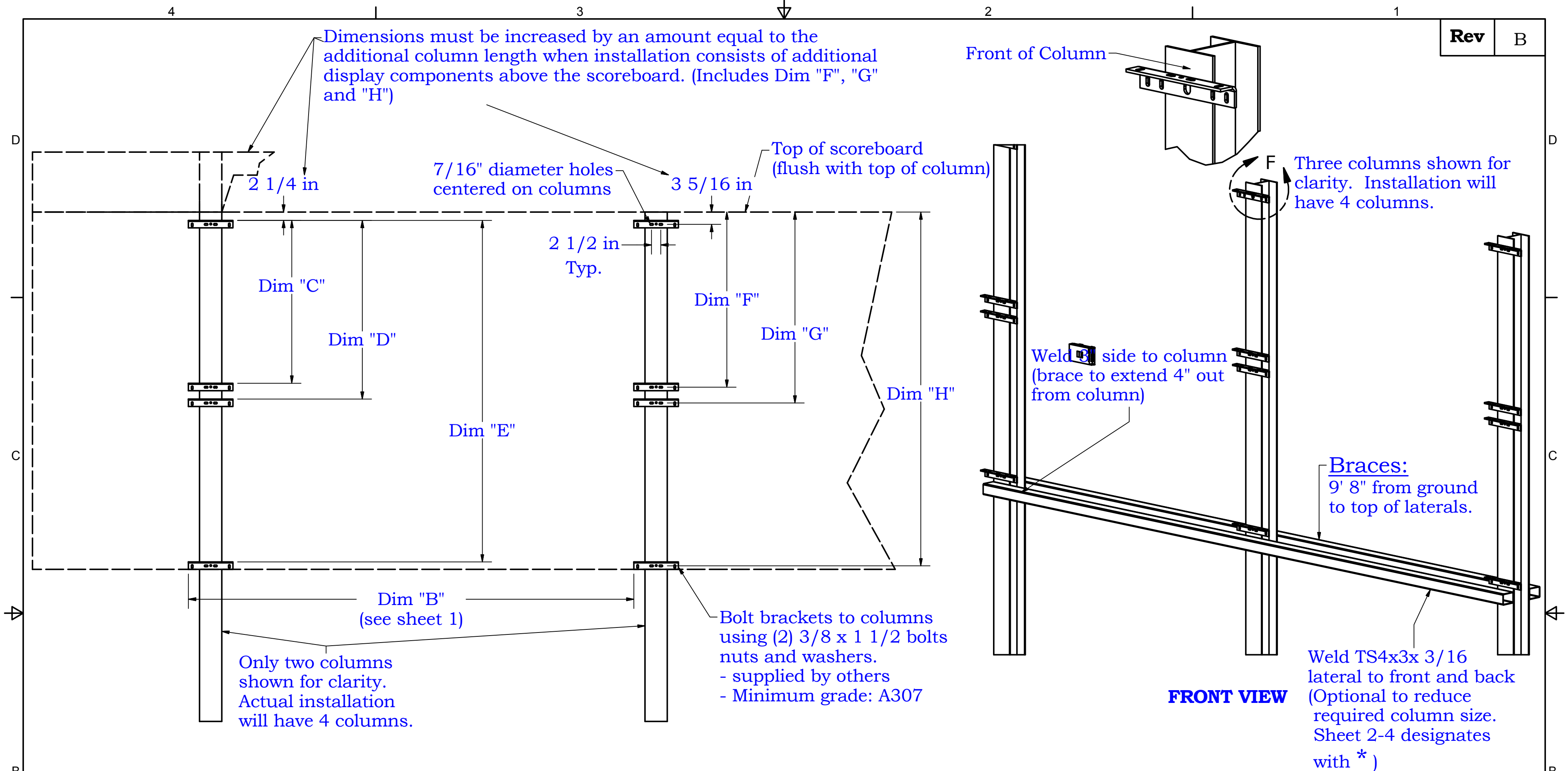
4

3

2

1





Rev	B
-----	---

	WELDING DIMENSIONS			BOLTING DIMENSIONS		
Model #	Dim "C"	Dim "D"	* Dim "E"	Dim "F"	Dim "G"	Dim "H"
1603, 1603PC	43 7/8"	48 1/8"	103 15/16"	47 5/32"	51 7/16"	107 1/4"
3620, 7620	43 7/8"	48 1/8"	91 15/16"	47 5/32"	51 7/16"	95 1/4"
3688, 7688						
3604, 3616	55 7/8"	60 1/8"	115 15/16"	59 5/32"	63 7/16"	119 1/4"
3657, 7616						

HARDWARE SUPPLIED BY OTHERS	
Description	Quantity
3/8 x 1 1/2 Bolt	32
3/8 Flat Washer	64
3/8 Lock Washer	32
3/8 Nut	32
3/8-16 eye bolts (see sheet 6)	2

- Required Hand Tools:
1. Phillips head screw driver/drill with phillips driver.
  2. 9/16" wrench
  3. Ratchet wrench and 9/16" socket
  4. Level
  5. Tape measure

- Notes:
- 1) If welding brackets to columns, weld around full contact surface of brackets.
  - 2) **FOR HIGH WIND AREAS:** For installations in wind zones higher than 150 mph, brackets must be welded to columns.
  - 3) Dimensions above should be taken from the top of the SHORTEST column, marked and leveled across to other column.
  - 4) Brackets shipped in separate container.

Outdoor Scoreboard  
Installation  
4 Column  
Multi-Section

**NEVCO**

Nevco, Inc.  
Greenville, Illinois 62246

Drawing No.  
241-0365

Sheet 5 of 7

Drawn  
WHP

Date  
12/14/18

4

3

2

1

Rev

B

Serrated Flange bolts  
(supplied by Nevco)

Threads: 3/8" -16

1" Maximum

Slide bottom bracket  
up and tighten one bolt  
to hold in place

Serrated Flange bolts  
(supplied by Nevco)

Stack up to 3  
washers under  
eye bolt if longer  
than 1".

DETAIL D

Install 3/8-16 eye bolts  
into top of board (lower  
row of cabinets 1st) for  
lifting. (eye bolts and  
washers supplied by  
others)

DETAIL B

DETAIL C

Install 3/8 x 1 1/4 bolt  
and nut (no washer) in  
center hole of top brackets.  
These will serve as hangers  
during installation. (supplied  
by Nevco)

Replace access doors  
when finished making  
connections

Top brackets are  
fixed position.

**WARNING:**

Do not leave any  
screw locations empty.

Screw sections together  
front and back using  
screws supplied by Nevco

Make signal connections  
between board sections  
before installing scoreboard.  
(connections located behind  
access doors with "SPICE  
ENCLOSURE" label)

Secure connections  
to hangers located  
inside cabinets.

CABLE  
HANGER

Notes:

- 1) Signal connections from lower row of cabinets to upper row should be made after both rows have been installed on columns. (see sheet 7 for details)
- 2) Make sure all bracket bolts are tight before installing scoreboard.

Insert extended flange into  
mating section (make sure  
both flanges of male end  
go to inside of female end)

**Important:** Screw sections together prior to  
installing board onto columns. (Upper row of  
cabinets and lower row of cabinets do not connect)

DETAIL A

Outdoor Scoreboard  
Installation  
4 Column  
Multi-Section

**NEVCO**

Nevco, Inc.  
Greenville, Illinois 62246

Drawing No. 241-0365

Drawn WHP

Date 12/14/18

Sheet 6 of 7

4

3

2

1

Remove eye bolts from first row and install on second row

Spreader bar preferred for lifting (see installation instructions for more details)

Note: Details below show only two columns for clarity. Actual installation will have 4 columns.

Make power/signal connection between upper and lower rows of cabinets after board has been installed.  
- connections located behind access doors)  
- Pull cables from lower section into upper section (connections must be made and permanently located in upper section)

CABLE HANGER

Tighten all bracket bolts on first row before installing second row.

**WARNING:**  
Do not lift scoreboards with any other additional weight attached such as laterals or other structural components

Install top row and tighten all bracket bolts.

Secure connections to hangers located inside cabinets.

Scoreboard

STEP ONE  
Install First Row

STEP TWO  
Install Second Row

Bolt installed in top brackets of each row will serve as hanger.

Column

2 bolts required per bracket set.

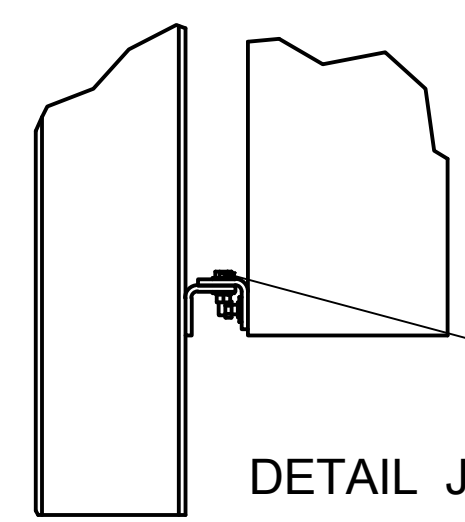
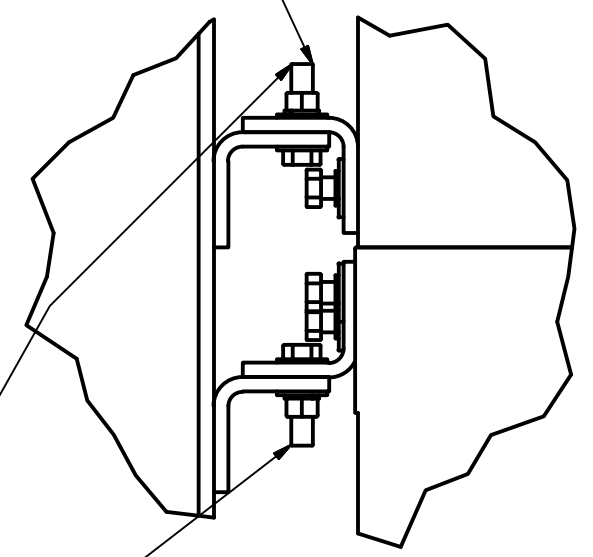
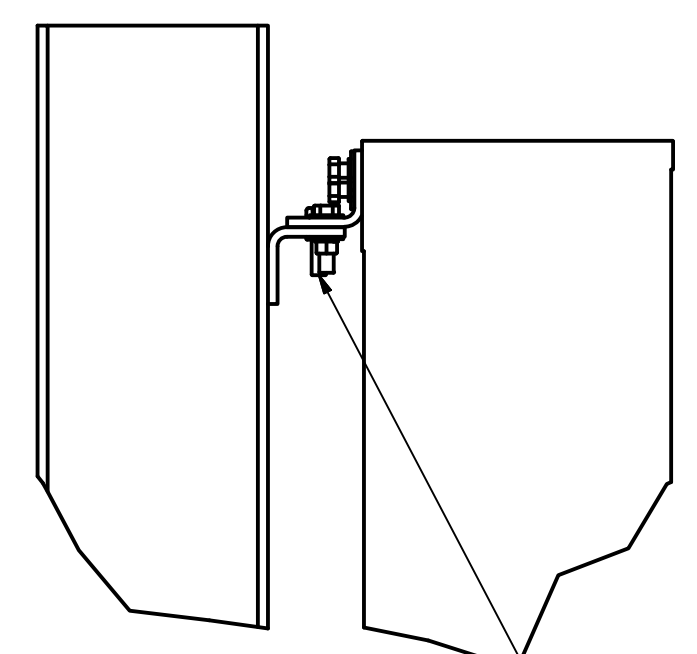
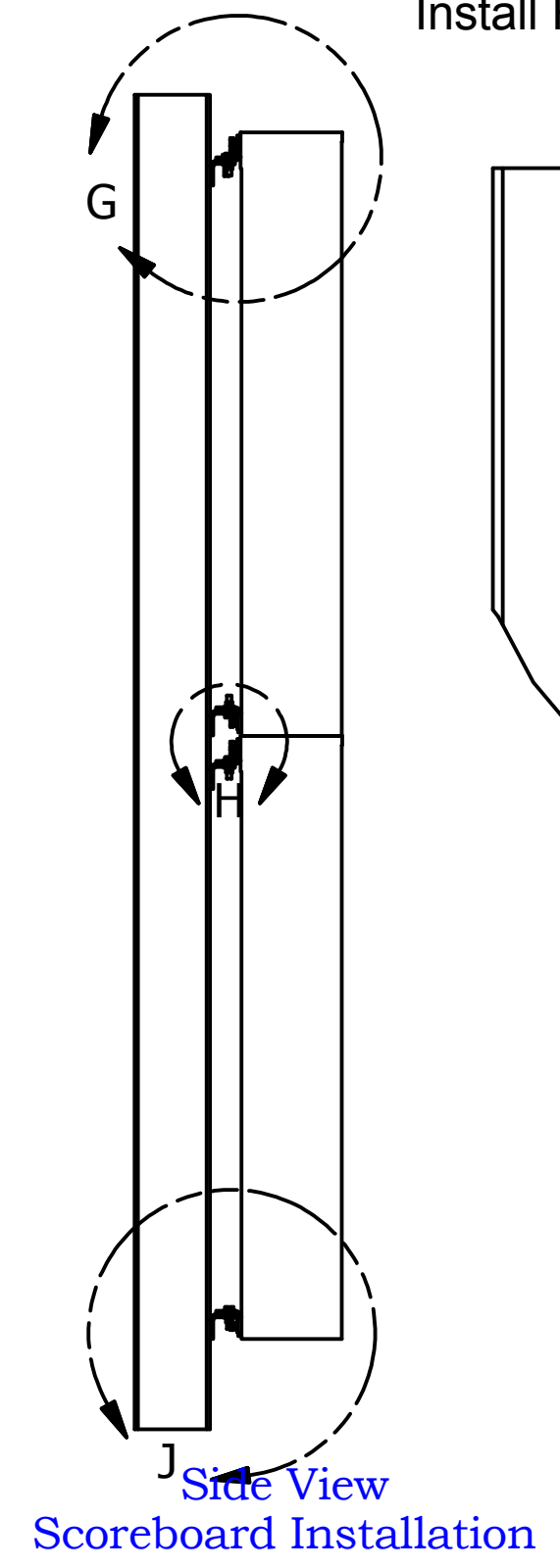
Hanging Detail


DETAIL G

DETAIL H

DETAIL J

Bolt brackets together using bolts, nuts, washers and lock washers supplied by Nevco. (3/8 x 1 3/4 bolts)



Outdoor Scoreboard Installation 4 Column Multi-Section		 Nevco, Inc. Greenville, Illinois 62246	
		Drawing No. 241-0365	
Drawn WHP	Date 12/14/18	Sheet 7 of 7	