

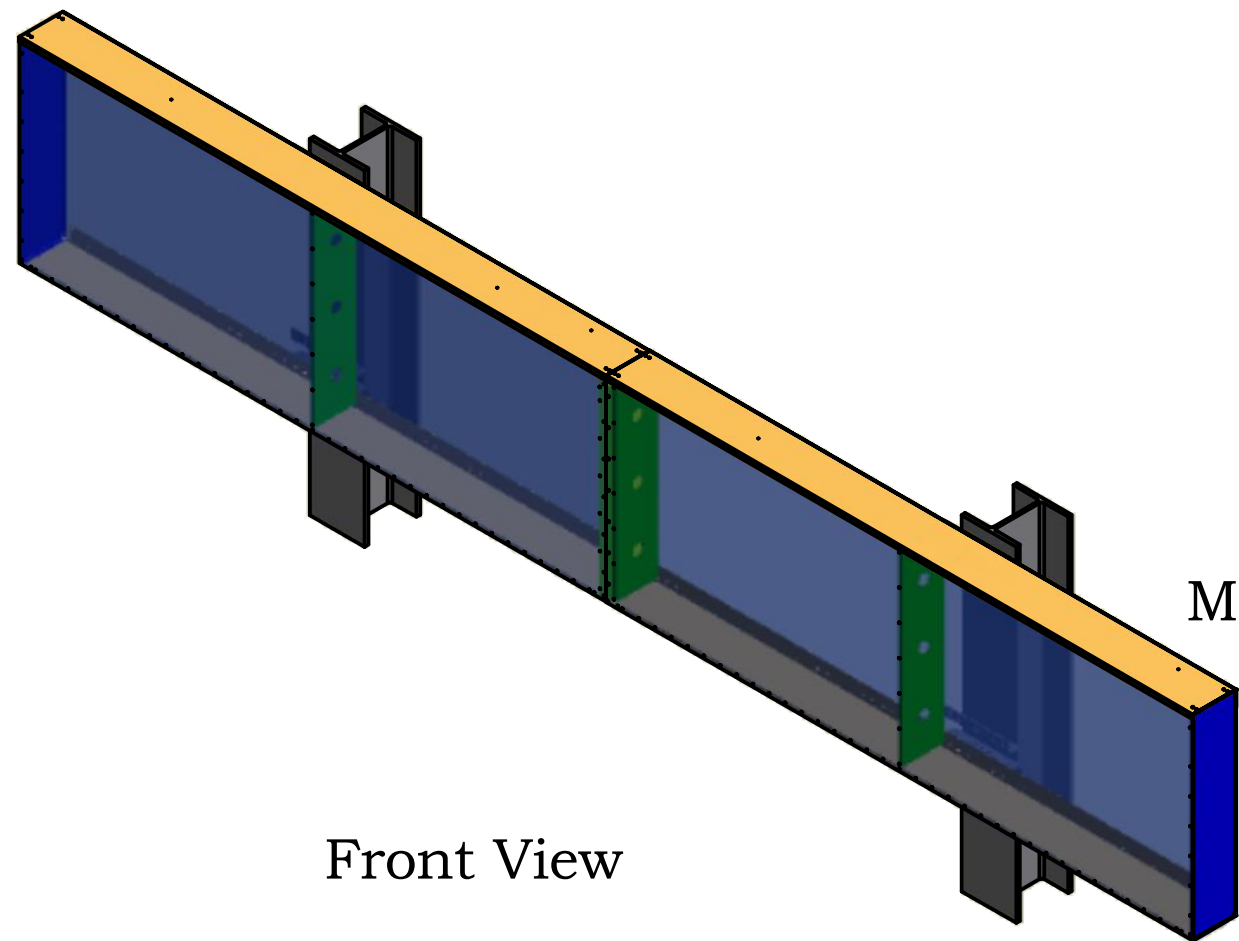
ADO or ADLO Style Sign Installation Instructions

Completed Installation

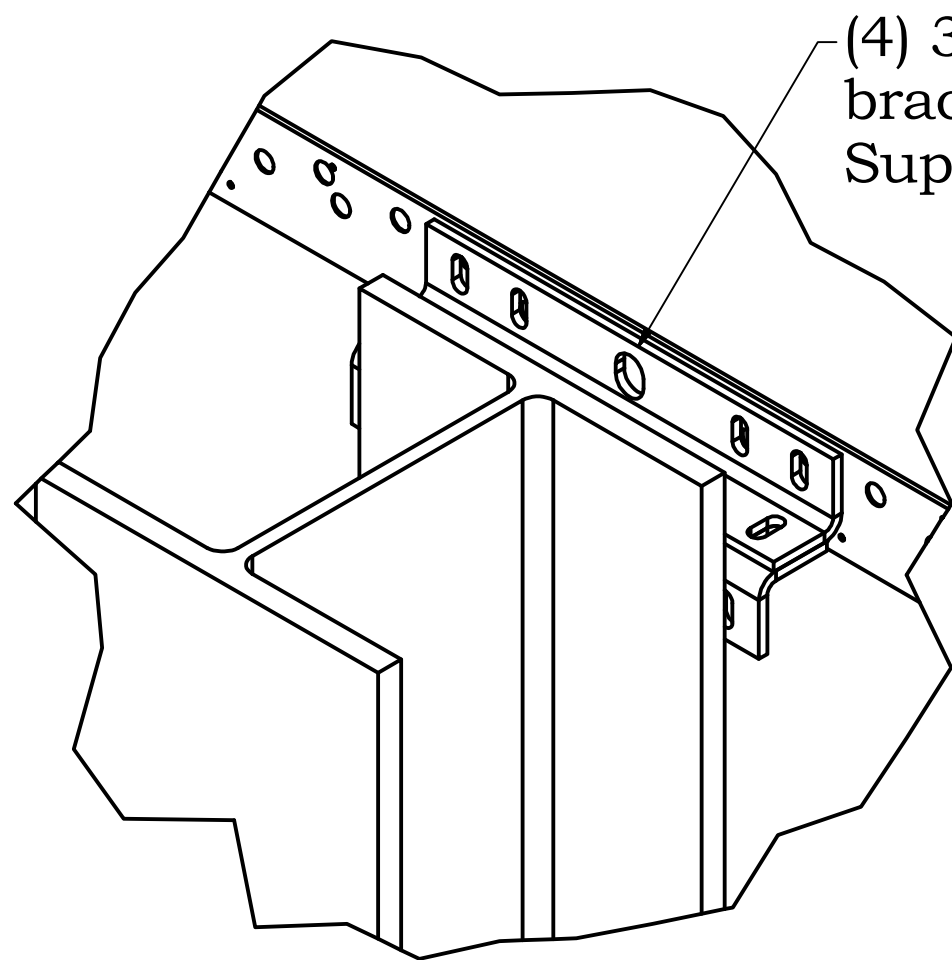
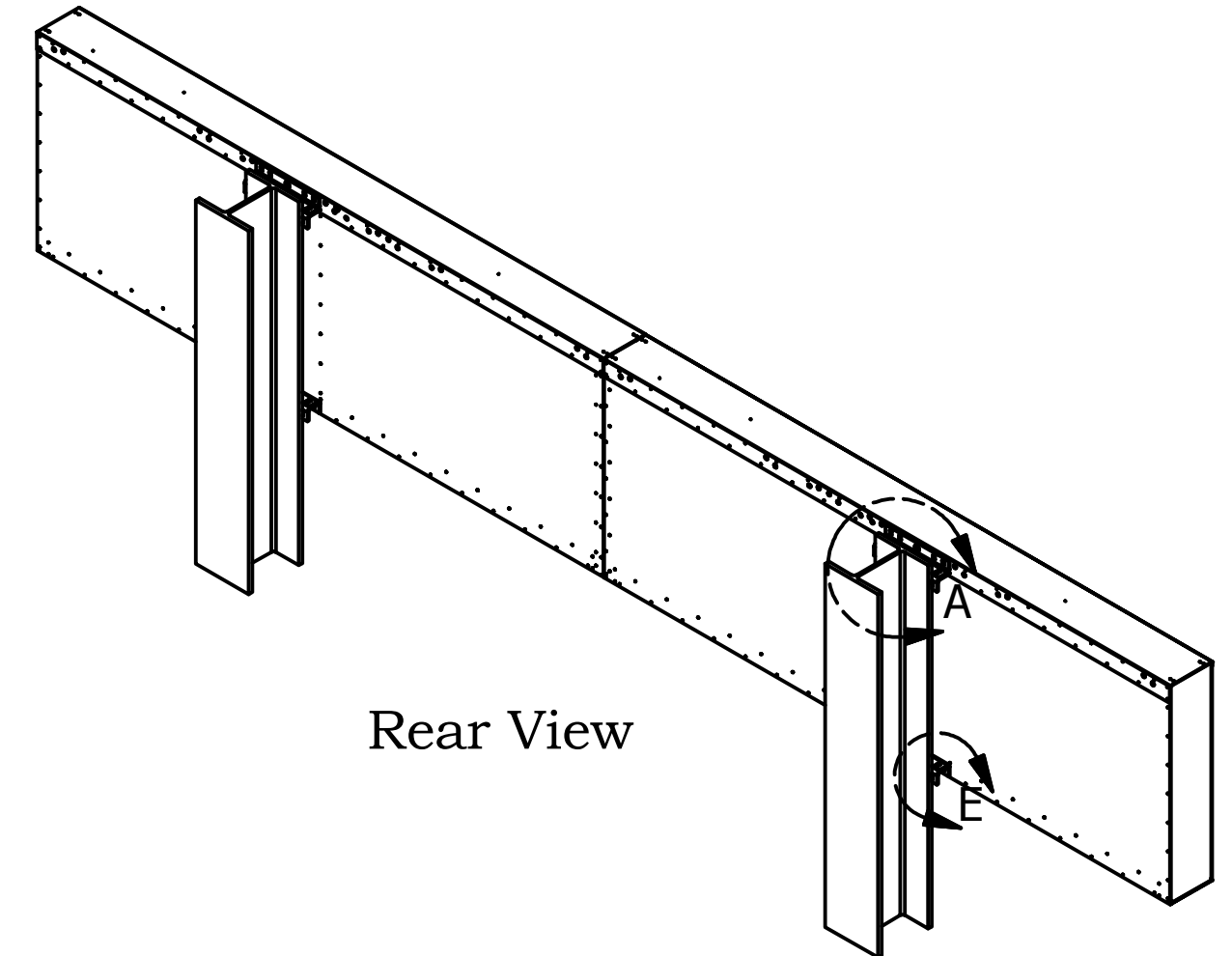
This signs is rated at 150 mph when mounted to columns at factory manufactured mounting locations. Mounting signs to columns in any other configuration can affect the integrity of the sign. ADO Signs weigh approximately 2.2 lbs/ft². ADLO Signs weigh 3.2 lbs/ft²

Rev

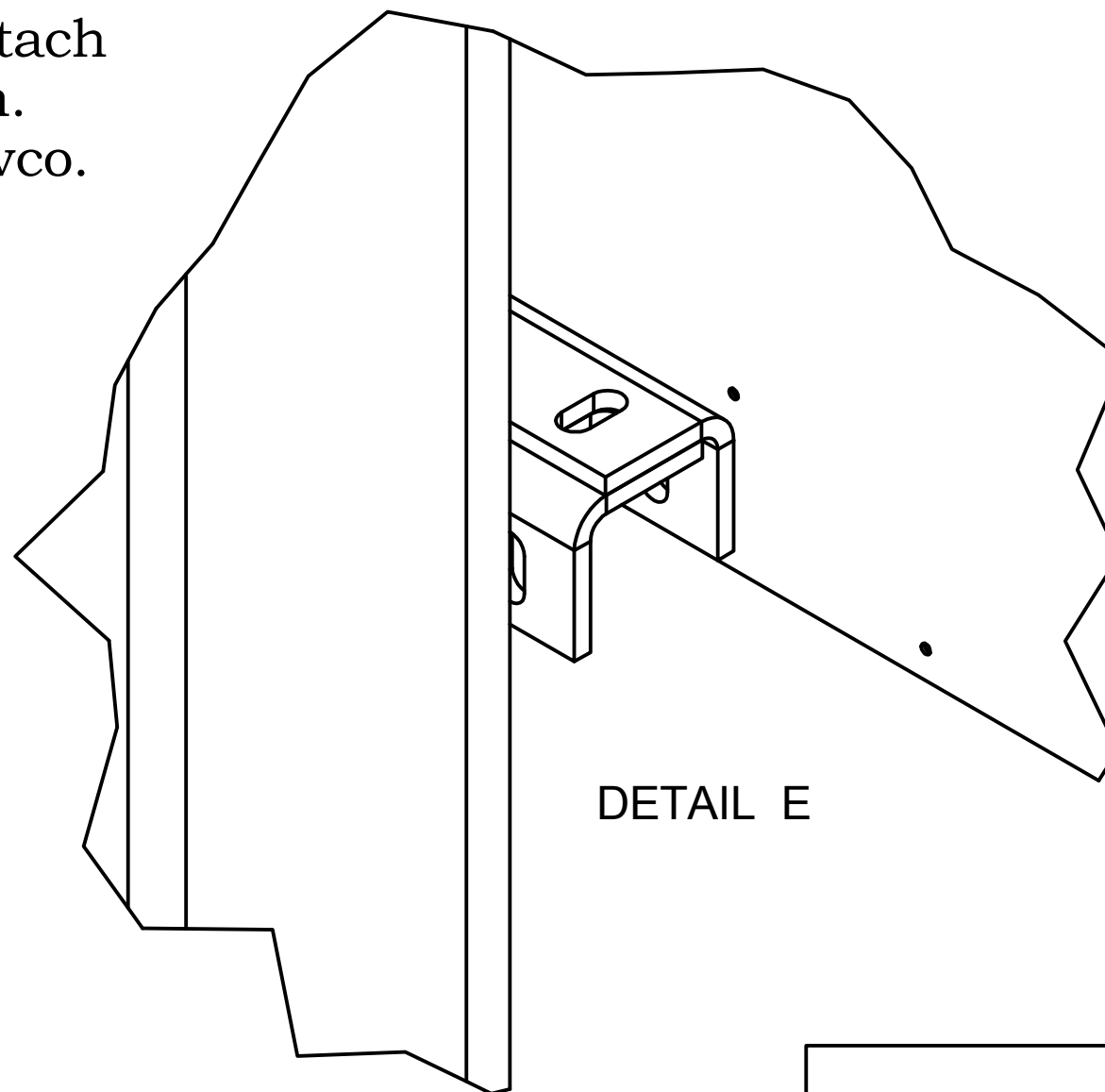
E



Max sign height: 5 ft



(4) 3/8 Bolts attach brackets to sign. Supplied by Nevco.



Enlarged Column Connection Detail

Installation
ADO/ADLO Signs



Nevco, Inc.
Greenville, Illinois 62246

Drawing No. 241-0357

Drawn WHP

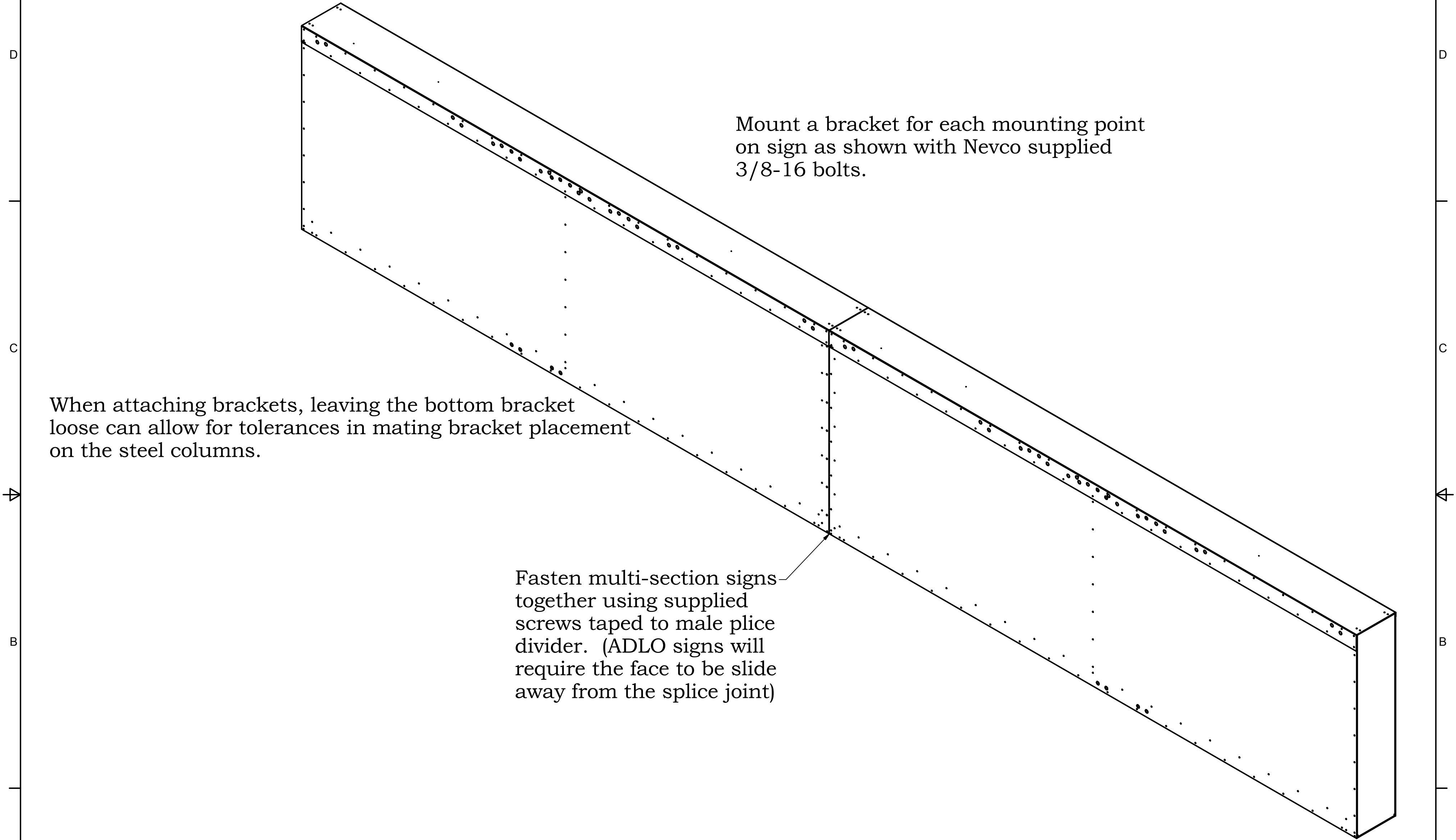
Date 7/6/2017

Sheet 1 of 9

ADO/ADLO Sign Installation Step One

Mount Nevco provided angle brackets to sign.

Rev	E
-----	---



Installation
ADO/ADLO Signs



Nevco, Inc.
Greenville, Illinois 62246

Drawing No. 241-0357

Drawn WHP

Date 7/6/2017

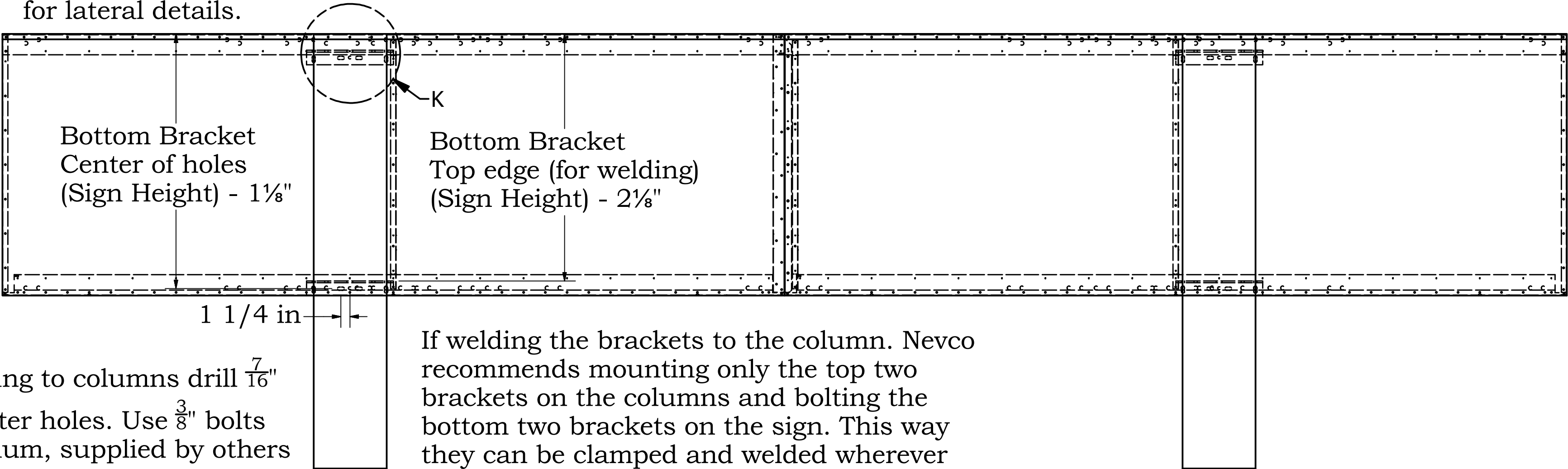
Sheet 2 of 9

ADO Sign Installation Step Two

Mount column brackets on column as shown.
Mounting bracket layout front view.

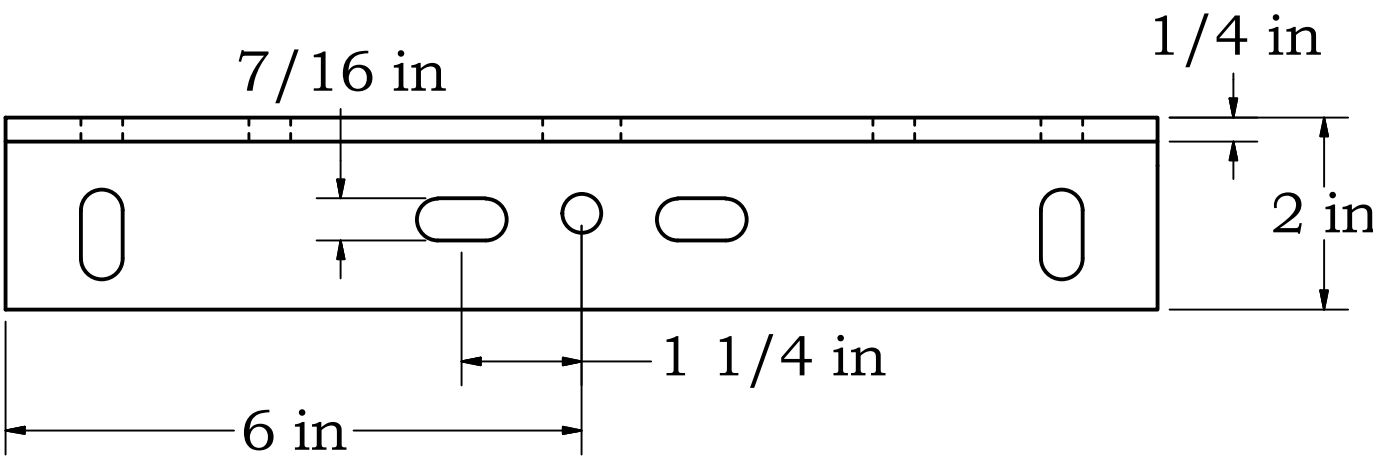
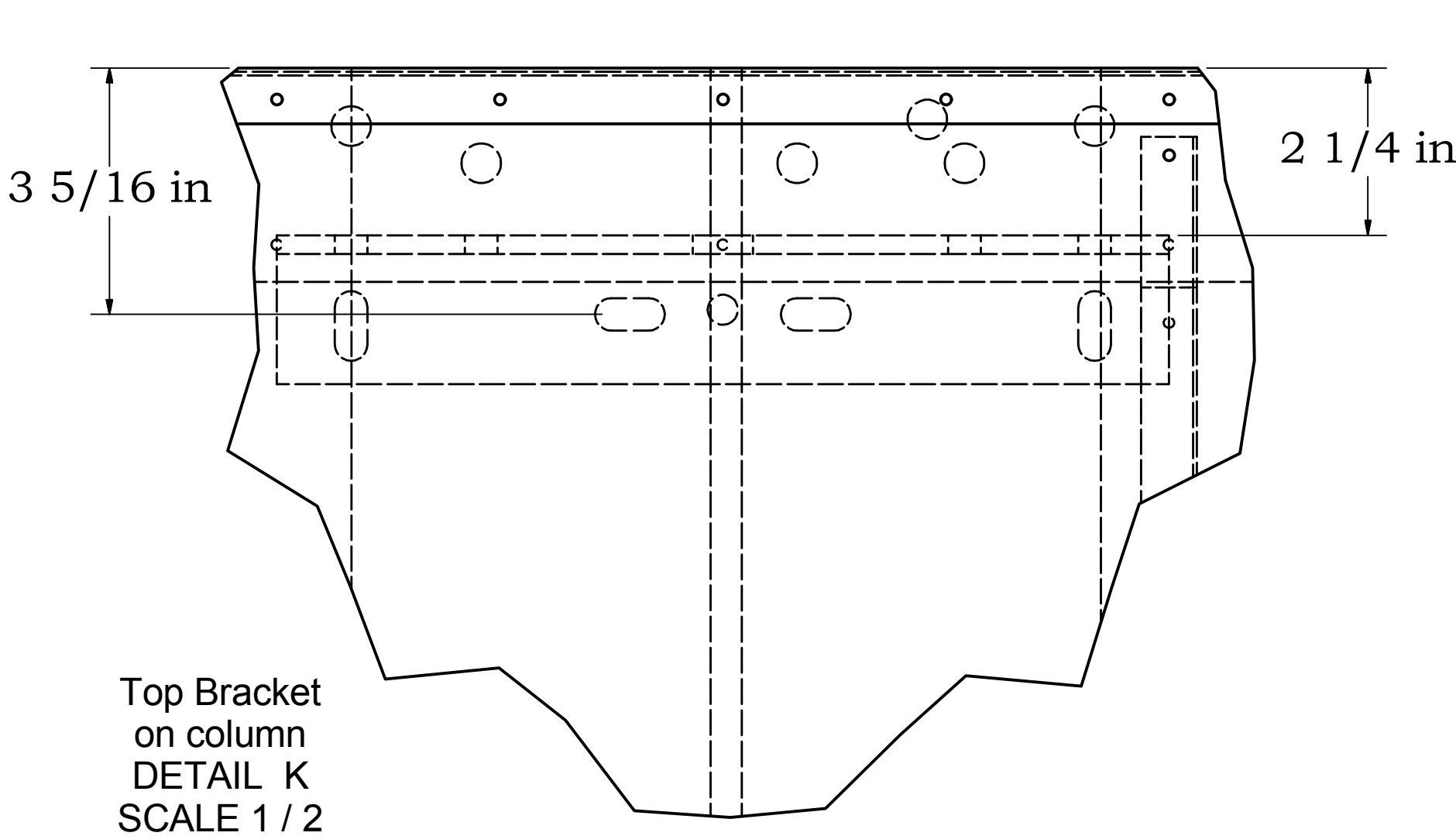
Note: If sign is mounted with scoreboard installed on laterals, the sign also requires the same sized laterals. See scoreboard lateral installation for lateral details.

Brackets mounted on sign not shown for clarity.



If bolting to columns drill $\frac{7}{16}$ " diameter holes. Use $\frac{3}{8}$ " bolts minimum, supplied by others

If welding the brackets to the column. Nevco recommends mounting only the top two brackets on the columns and bolting the bottom two brackets on the sign. This way they can be clamped and welded wherever they fall.



Mounting Bracket Detail
SCALE 1 / 2

Installation
ADO/ADLO Signs



Nevco, Inc.
Greenville, Illinois 62246

Drawing No. 241-0357

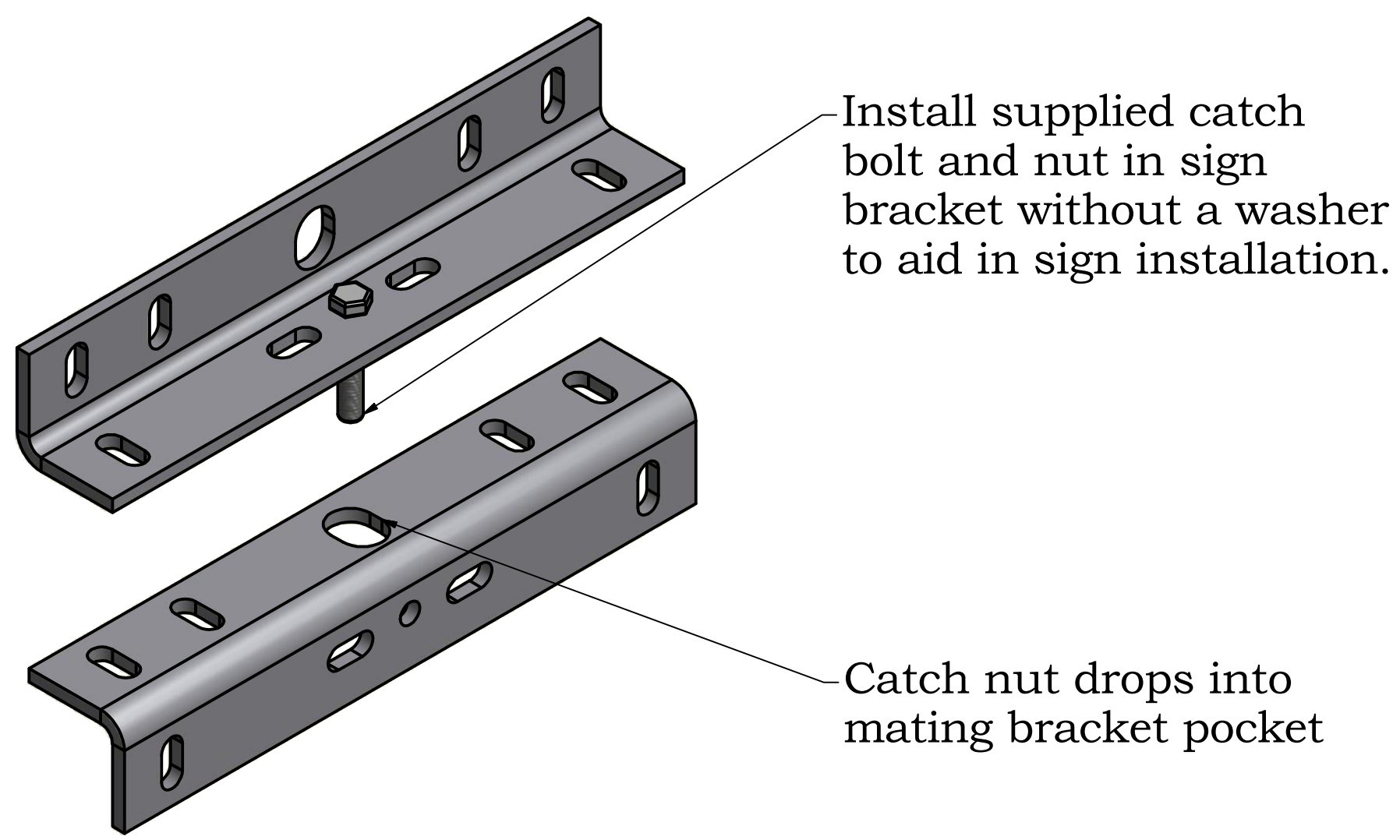
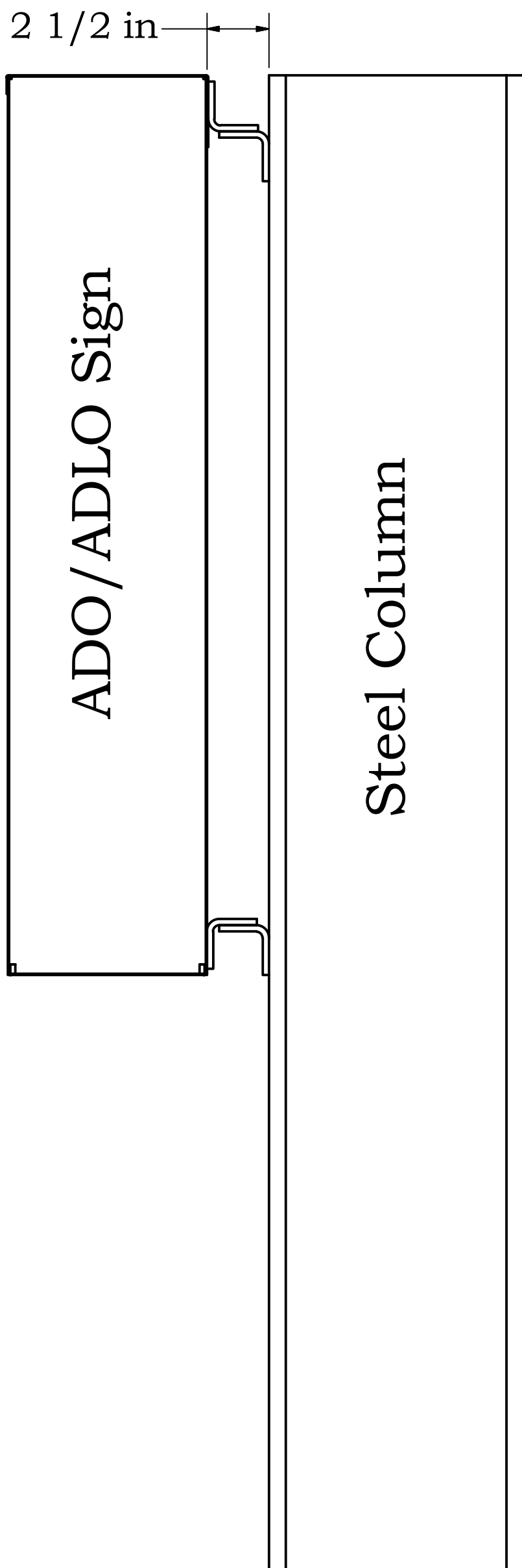
Drawn WHP

Date 7/6/2017

Sheet 3 of 9

ADO Sign Installation Step Two Cont.

Mounting bracket layout side view.
The 2 1/2" spacing from the column
is nominal. Slotted holes in the
brackets allow for 1" total adjustment



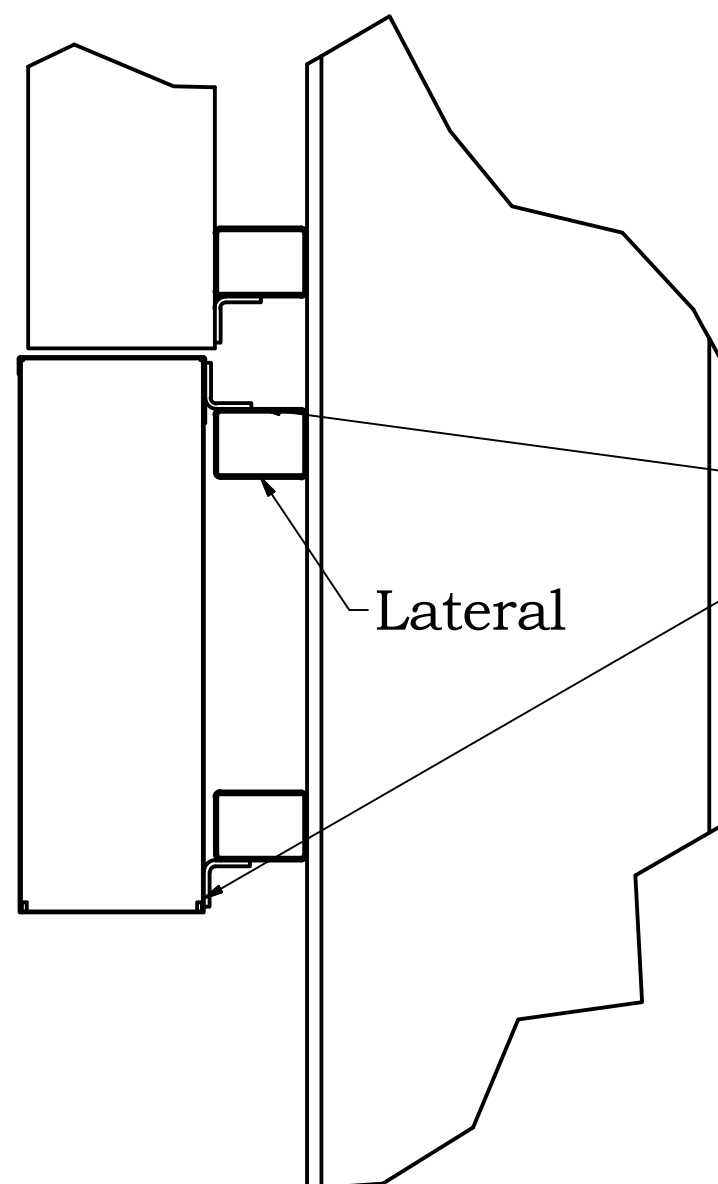
Installing ADO Signs onto Laterals

D

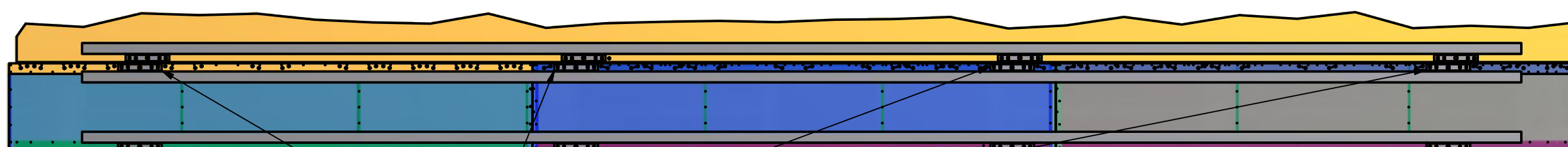
D

1. Assemble horizontal sign sections with supplied #8 sheet metal screws

2. Install eye bolts for lifting cabinet into place.



3. Install brackets to signs using (4) ea. $\frac{3}{8} \times 1\frac{1}{4}$ " serrated flange bolts, supplied by Nevco. Note orientation of brackets according to bracket orientation labels on the back of the sign cabinets. The bottom bracket can be left loose to accomodate adjustment for lateral placement.



4. Install sign by bolting or welding bracket to lateral.

Installation
ADO/ADLO Signs



Nevco, Inc.
Greenville, Illinois 62246

Drawing No. 241-0357

Drawn WHP

Date 7/6/2017

Sheet 5 of 9

4

3

2

1

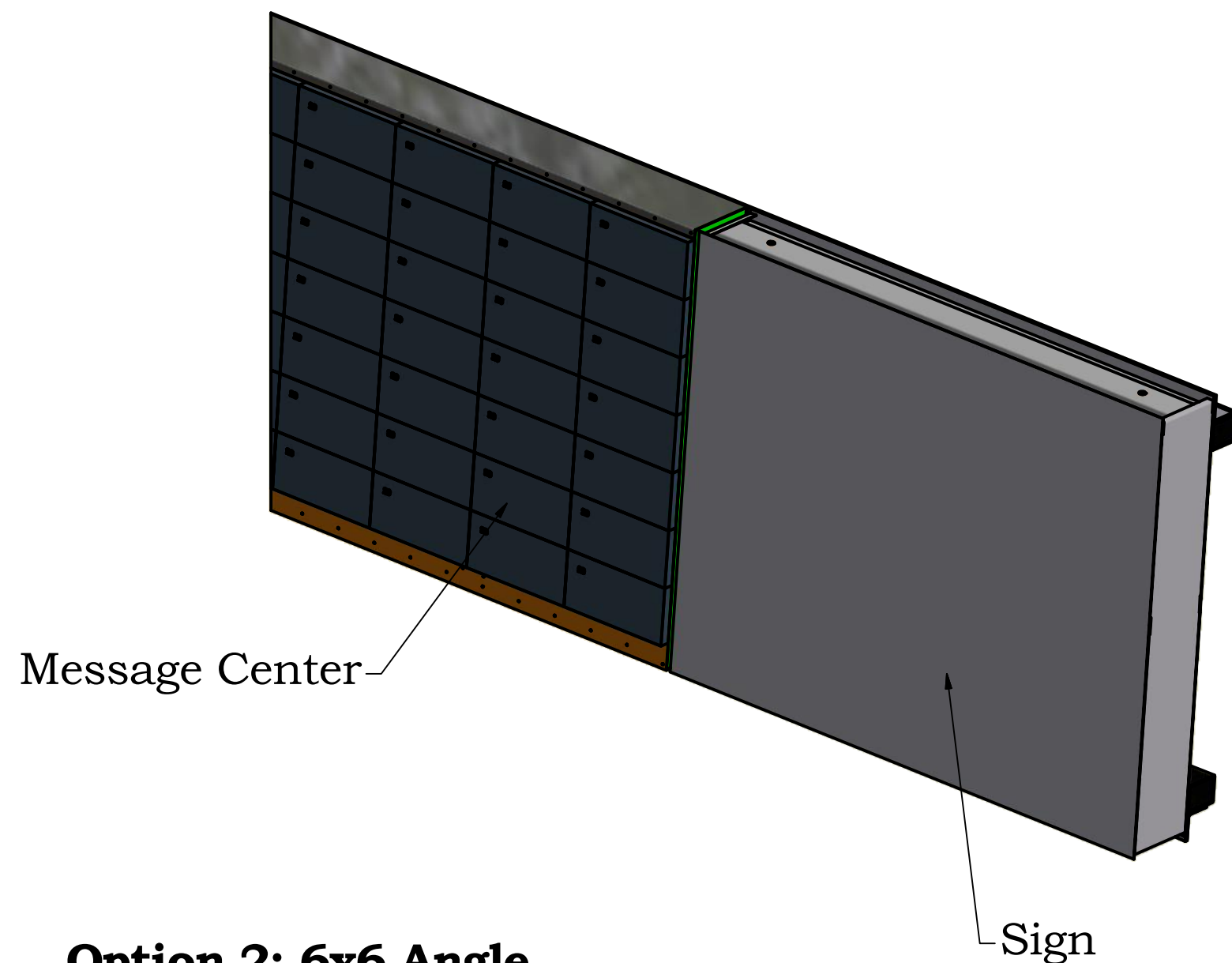
A

A

ADO/ADLO Sign Installation Step Two Cont.

Special case of sign mounted next to message center.

Option 1: Tube and angle



Sign Back

Message Center Back

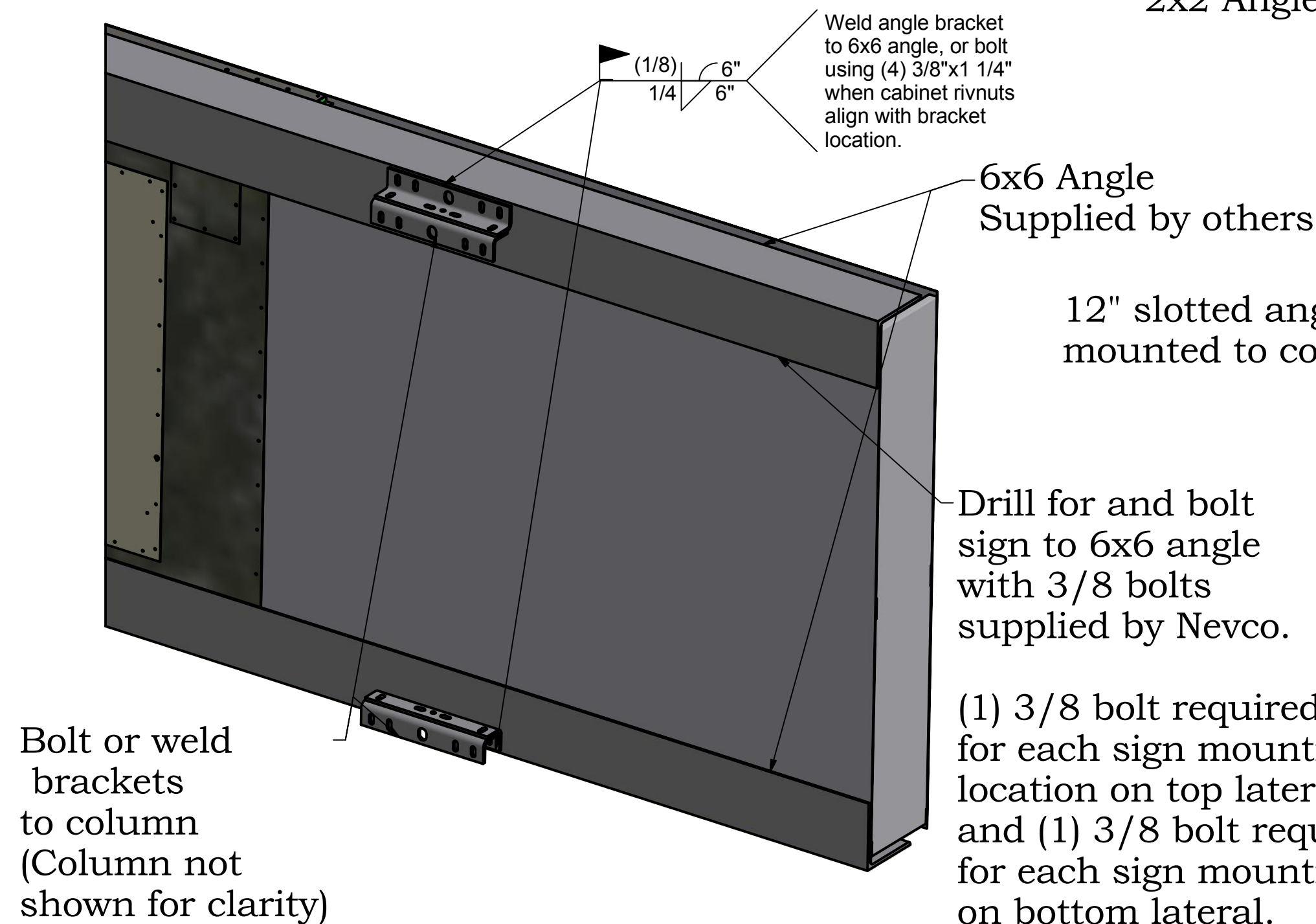
Angle provided by others.

Extend angle and laterals used to mount message center to end of sign and mount sign to angle with 3/8-16 bolts.

Signs next to message centers do not use the 12" slotted angle brackets used for signs that are mounted to column.

Angle or tube steel provided by others.

Option 2: 6x6 Angle



2x2 Angle provided by others.

Message Center Back

Extend angle used to mount message center to end of sign and mount sign to angle with 3/8-16 bolts.

Max distance of 4' from edge of sign to last bracket

Installation
ADO/ADLO Signs

NEVCO

Nevco, Inc.
Greenville, Illinois 62246

Drawing No. 241-0357

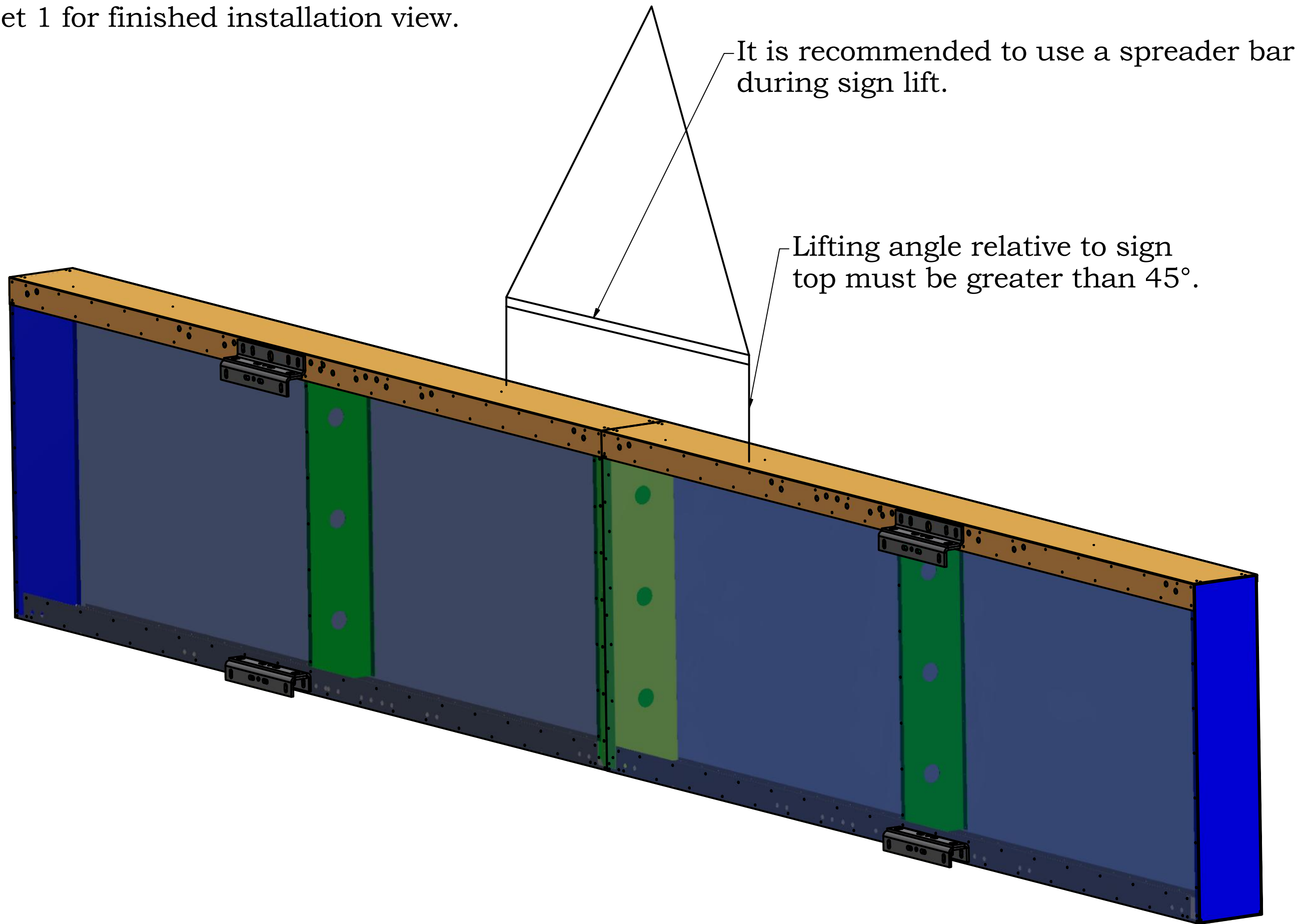
Drawn WHP

Date 7/6/2017

Sheet 6 of 9

ADO/ADLO Sign Installation Step Three

Lift sign to mounted brackets securing sign to brackets with Nevco provided 3/8-16 bolts. 2 each connection.
See Sheet 1 for finished installation view.



Installation
ADO/ADLO Signs



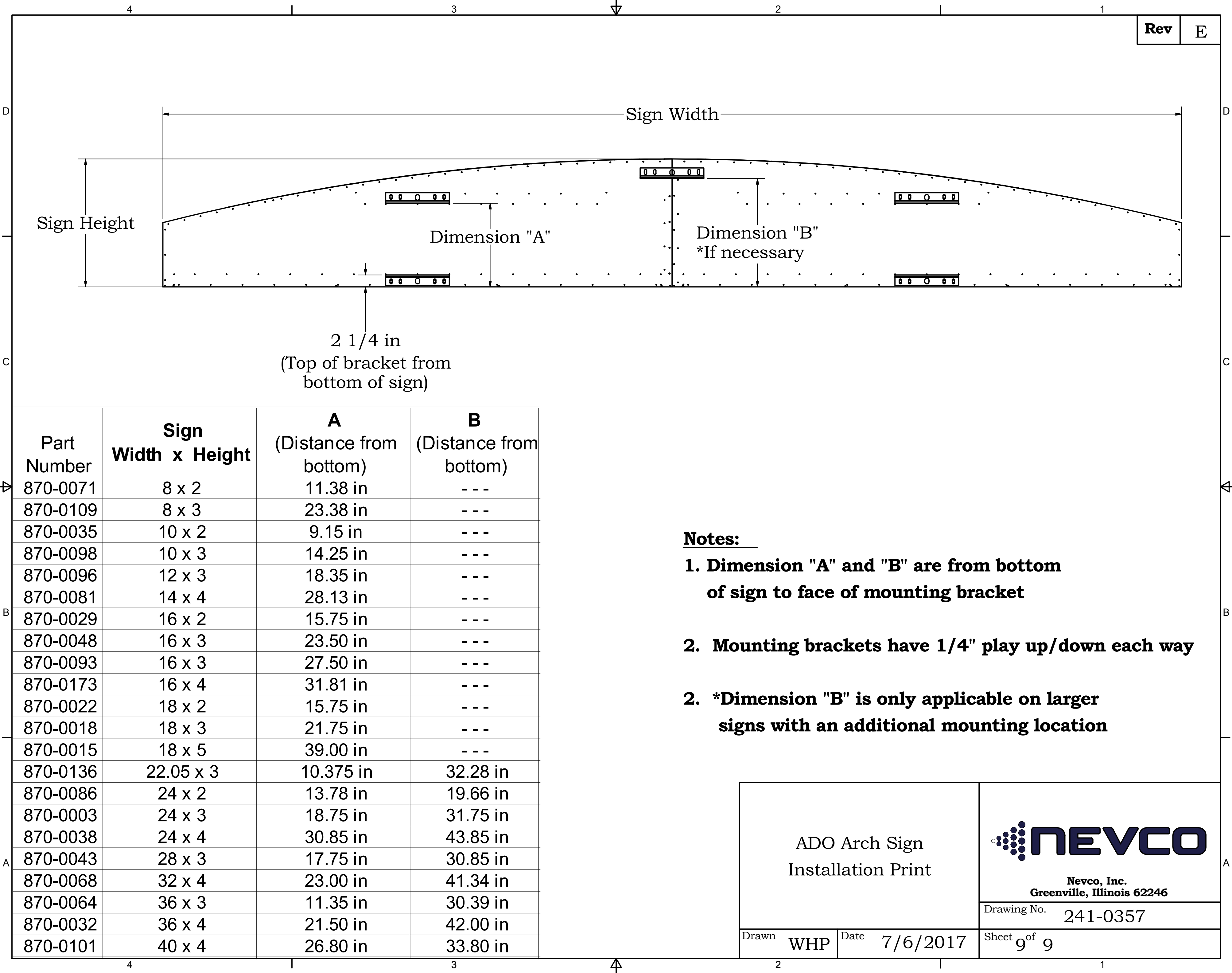
Nevco, Inc.
Greenville, Illinois 62246

Drawing No. 241-0357

Drawn WHP

Date 7/6/2017


Sheet 7 of 9



Rev	E
-----	---

Part Number	Sign Width x Height	A (Distance from bottom)	B (Distance from bottom)
870-0071	8 x 2	11.38 in	---
870-0109	8 x 3	23.38 in	---
870-0035	10 x 2	9.15 in	---
870-0098	10 x 3	14.25 in	---
870-0096	12 x 3	18.35 in	---
870-0081	14 x 4	28.13 in	---
870-0029	16 x 2	15.75 in	---
870-0048	16 x 3	23.50 in	---
870-0093	16 x 3	27.50 in	---
870-0173	16 x 4	31.81 in	---
870-0022	18 x 2	15.75 in	---
870-0018	18 x 3	21.75 in	---
870-0015	18 x 5	39.00 in	---
870-0136	22.05 x 3	10.375 in	32.28 in
870-0086	24 x 2	13.78 in	19.66 in
870-0003	24 x 3	18.75 in	31.75 in
870-0038	24 x 4	30.85 in	43.85 in
870-0043	28 x 3	17.75 in	30.85 in
870-0068	32 x 4	23.00 in	41.34 in
870-0064	36 x 3	11.35 in	30.39 in
870-0032	36 x 4	21.50 in	42.00 in
870-0101	40 x 4	26.80 in	33.80 in

- Notes:**
- 1. **Dimension "A" and "B" are from bottom of sign to face of mounting bracket**
 - 2. **Mounting brackets have 1/4" play up/down each way**
 - 2. ***Dimension "B" is only applicable on larger signs with an additional mounting location**

ADO Arch Sign Installation Print		 Nevco, Inc. Greenville, Illinois 62246
Drawn WHP	Date 7/6/2017	Sheet 9 of 9