

* 3 Row Scoreboard

DIMENSIONS AND SPECIFICATIONS						
Model	LENGTH	HEIGHT	WEIGHT	WEIGHT w/ETN	DIM "A"	DIM "B"
1604 1604PC	28'	8' 3/16"	650	712	4'	10'
1606 1606PC 3615 3617 3618 3619 7630 7631 7632	24'	8' 3/16"	570	632	4'	8'
3685	24'	8' 3/16"	N/A	740	4'	8'
7605* 7615* 7625*	24'	10' 6 9/32"	730	792	4'	8'
7685	24'	8' 3/16"	N/A	740	4'	8'
3621	20'	8' 3/16"	520	582	1'	9'
3682	20'	8' 3/16"	N/A	690	1'	9'

- General Notes:
1. Column steel to be grade A992 (50 ksi steel minimum).
 2. Bracing steel to be ASTM A500 Grade B minimum (see not 2 on sheets 3-7).
 3. Minimum bolt grade: A307
 4. All welds to conform to AWS standards
 5. The dimensions in the charts on sheets 3-7 are calculated using the requirements specified in IBC 2012, and the Manual of Steel Construction (13th Edition). Soil lateral bearing pressure is considered to be 150 psf/f.
 6. Check with the local building authority to determine the installation sites wind zone and risk category as specified in IBC 2012 and ASCE 7-10. For the purposes of these installation prints, Risk Category I shall apply to an installation where the scoreboard is more than 1.5 x the overall height away from the nearest spectator section. Risk Category II shall apply to all other installations.
 7. The weights of signs to be calculated using 2.2 lb/sq. ft of sign area.
 8. The weights of Nevco message centers to be calculated using 8.5 lb/sq ft.
 9. The weights of Nevco video displays to be calculated using 9.5 lbs/sq. ft.
 10. The weights of Nevco arches to be calculated using 2.3 lbs/sq. ft.

Important. Read before installation.
This is not an engineered drawing. It is intended for representational purposes only. The dimensions called out on this drawing are intended to be used as a guide only, and are not intended to be suitable for all conditions. Adding signs or other components around the scoreboard beyond the scope of this drawing or increasing the display height from the ground will affect the installation requirements. Nevco recommends that you consult a professional engineer or architect familiar with the area before attempting installation. They can verify that the selected mounting beams or posts along with the brackets, screws, and other hardware items provided by others or Nevco are adequate for your local soil conditions, wind loads and other local codes. If procedures are used that are not covered in this drawing, careful analysis of the installation is urged.

Outdoor Scoreboard
Footing Installation
3 Column
Multi-Section

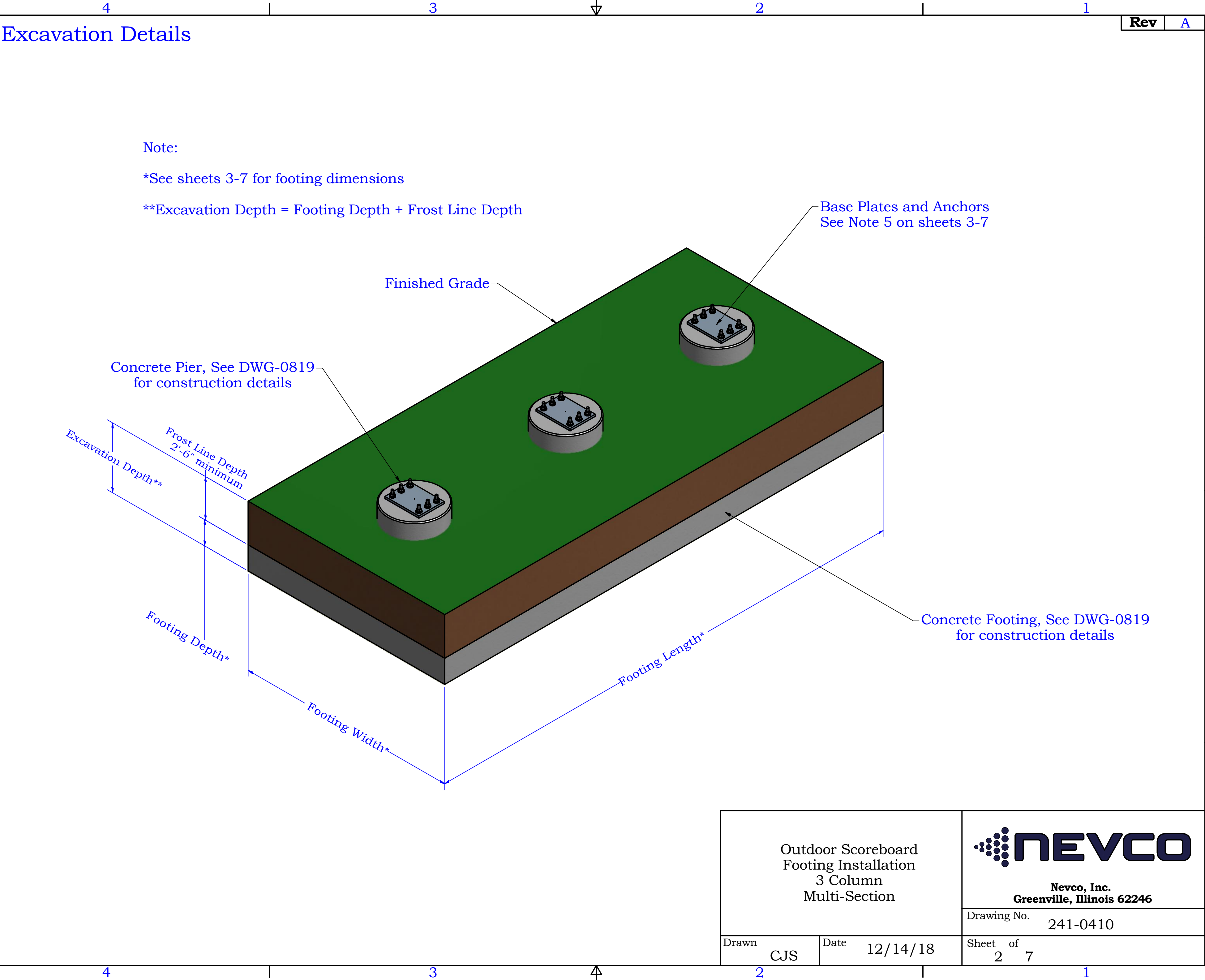
Nevco, Inc.
Greenville, Illinois 62246

Drawing No. 241-0410

Sheet 1 of 7

Drawn CJS

Date 12/14/18



105 MPH WIND ZONES

EXPOSURE C (See Note 3)

Column and Foundation Requirements (Based on ASCE 7-10)

Display Height	Braced Column	Spread Footing				Pier and Pier Reinforcement				Anchors and Base Plates**	Column Length
		Footing Length	Footing Width	Footing Depth	Steel Reinforcement	Pier Diameter	Quantity	Size	Hook Length		
8'	W10x17	22'	8'	1' 6"	#4's @12in O.C. T&B	3'	18	#5	8"	Option 3	17'
10'	W8x18	22'	9'	1' 6"	#4's @12in O.C. T&B	3'	18	#5	8"	Option 1	19'
12'	W8x21	22'	10'	1' 6"	#4's @12in O.C. T&B	3'	18	#5	8"	Option 1	21'
14'	W10x22	22'	11'	1' 6"	#4's @12in O.C. T&B	3'	18	#5	8"	Option 3	23'
16'	W10x26	22'	12'	1' 6"	#4's @12in O.C. T&B	3'	18	#5	8"	Option 3	25'
18'	W12x26	22'	13'	1' 6"	#4's @12in O.C. T&B	3'	18	#5	8"	Option 5	27'
20'	W12x30	22'	14'	1' 6"	#5's @12in O.C. T&B	3'	18	#5	8"	Option 5	29'
22'	W14x34	22'	15'	1' 6"	#5's @12in O.C. T&B	3'	18	#5	8"	Option 8	31'
25'	W18x35	22'	17'	1' 6"	#5's @12in O.C. T&B	4'	24	#6	9"	Option 11	34'
30'	W14x43	22'	19'	1' 6"	#5's @12in O.C. T&B	4'	24	#6	9"	Option 9	39'
35'	W18x50	22'	20'	1' 9"	#7's @12in O.C. T&B	4'	24	#6	9"	Option 11	44'
40'	W21x55	22'	21'	2'	#8's @12in O.C. T&B	5'	30	#7	11"	Option 14	49'

Column and Foundation Requirements (Based on ASCE 7-10)

Display Height	Braced Column	Spread Footing				Pier and Pier Reinforcement				Anchors and Base Plates**	Column Length
		Footing Length	Footing Width	Footing Depth	Steel Reinforcement	Pier Diameter	Quantity	Size	Hook Length		
8'	W8x21	25'	8'	1' 6"	#4's @12in O.C. T&B	3'	18	#5	8"	Option 1	17'
10'	W10x22	25'	9'	1' 6"	#4's @12in O.C. T&B	3'	18	#5	8"	Option 3	19'
12'	W10x26	25'	10'	1' 6"	#4's @12in O.C. T&B	3'	18	#5	8"	Option 3	21'
14'	W12x26	25'	11'	1' 6"	#4's @12in O.C. T&B	3'	18	#5	8"	Option 5	23'
16'	W12x30	25'	12'	1' 6"	#4's @12in O.C. T&B	3'	18	#5	8"	Option 5	25'
18'	W14x30	25'	13'	1' 6"	#4's @12in O.C. T&B	3'	18	#5	8"	Option 8	27'
20'	W14x34	25'	14'	1' 6"	#5's @12in O.C. T&B	3'	18	#5	8"	Option 8	29'
22'	W16x36	25'	15'	1' 6"	#5's @12in O.C. T&B	4'	24	#6	9"	Option 10	31'
25'	W21x44	25'	17'	1' 6"	#5's @12in O.C. T&B	5'	30	#7	11"	Option 14	34'
30'	W18x55	25'	19'	1' 6"	#7's @12in O.C. T&B	4'	24	#6	9"	Option 11	39'
35'	W21x62	25'	20'	1' 9"	#7's @12in O.C. T&B	5'	30	#7	11"	Option 14	44'
40'	W24x68	25'	21'	2'	#8's @12in O.C. T&B	5'	30	#7	11"	Option 16	49'

Column and Foundation Requirements (Based on ASCE 7-10)

Display Height	Braced Column	Spread Footing				Pier and Pier Reinforcement				Anchors and Base Plates**	Column Length
		Footing Length	Footing Width	Footing Depth	Steel Reinforcement	Pier Diameter	Quantity	Size	Hook Length		
8'	W8x21	30'	8'	1' 6"	#4's @12in O.C. T&B	3'	18	#5	8"	Option 1	17'
10'	W10x22	30'	9'	1' 6"	#4's @12in O.C. T&B	3'	18	#5	8"	Option 3	19'
12'	W10x26	30'	10'	1' 6"	#4's @12in O.C. T&B	3'	18	#5	8"	Option 3	21'
14'	W12x26	30'	11'	1' 6"	#4's @12in O.C. T&B	3'	18	#5	8"	Option 5	23'
16'	W14x30	30'	12'	1' 6"	#4's @12in O.C. T&B	3'	18	#5	8"	Option 8	25'
18'	W14x34	30'	13'	1' 6"	#4's @12in O.C. T&B	3'	18	#5	8"	Option 8	27'
20'	W16x36	30'	14'	1' 6"	#5's @12in O.C. T&B	4'	24	#6	9"	Option 10	29'
22'	W16x40	30'	15'	1' 6"	#5's @12in O.C. T&B	4'	24	#6	9"	Option 10	31'
25'	W21x44	30'	17'	1' 6"	#5's @12in O.C. T&B	5'	30	#7	11"	Option 14	34'
30'	W21x55	30'	19'	1' 6"	#7's @12in O.C. T&B	5'	30	#7	11"	Option 14	39'
35'	W21x68	30'	20'	1' 9"	#7's @12in O.C. T&B	5'	30	#7	11"	Option 14	44'
40'	W24x76	30'	22'	2'	#8's @12in O.C. T&B	5'	30	#7	11"	Option 16	49'

Chart Notes:

1. If the display height is between chart values shown above, use the next highest value.
2. All installations will be braced with laterals placed at 10' increments on front and back of the column starting at 10' above grade. See 241-0414 for lateral sizes.
3. Wind loading figured at **Exposure "C" - Open terrain** with scattered obstructions having heights generally less than 30 feet. This category includes flat open country, grasslands, and all water surfaces in hurricane prone areas.
4. Wind loading figured at **Exposure "B" - Urban and suburban areas**, wooded areas, or other terrain with numerous closely spaced obstructions having the size of single-family dwellings or larger. These areas prevail in the upwind direction for a distance of 2600 feet or 20 times the structure height, whichever is greater.
5. **Please see DWG-0818 to determine base plate and anchor sizes from the option listed above.
6. Quantity of Pier reinforcements listed is **PER PIER**.

EXPOSURE B (See Note 4)

Column and Foundation Requirements (Based on ASCE 7-10)

Display Height	Braced Column	Spread Footing				Pier and Pier Reinforcement				Anchors and Base Plates**	Column Length
		Footing Length	Footing Width	Footing Depth	Steel Reinforcement	Pier Diameter	Quantity	Size	Hook Length		
8'	W12x14	22'	6' 6"	1' 6"	#4's @12in O.C. T&B	3'	18	#5	8"	Option 5	17'
10'	W10x17	22'	7' 6"	1' 6"	#4's @12in O.C. T&B	3'	18	#5	8"	Option 3	19'
12'	W8x18	22'	8' 6"	1' 6"	#4's @12in O.C. T&B	3'	18	#5	8"	Option 1	21'
14'	W8x21	22'	9'	1' 6"	#4's @12in O.C. T&B	3'	18	#5	8"	Option 1	23'
16'	W8x21	22'	10'	1' 6"	#4's @12in O.C. T&B	3'	18	#5	8"	Option 1	25'
18'	W10x22	22'	11'	1' 6"	#4's @12in O.C. T&B	3'	18	#5	8"	Option 3	27'
20'	W10x26	22'	12'	1' 6"	#4's @12in O.C. T&B	3'	18	#5	8"	Option 3	29'
22'	W12x26	22'	13'	1' 6"	#4's @12in O.C. T&B	3'	18	#5	8"	Option 5	31'
25'	W12x30	22'	14'	1' 6"	#5's @12in O.C. T&B	3'	18	#5	8"	Option 5	34'
30'	W14x34	22'	16'	1' 6"	#5's @12in O.C. T&B	3'	18	#5	8"	Option 8	39'
35'	W16x40	22'	19'	1' 6"	#5's @12in O.C. T&B	4'	24	#6	9"	Option 10	44'
40'	W16x50	22'	21'	1' 6"	#7's @12in O.C. T&B	4'	24	#6	9"	Option 10	49'

Column and Foundation Requirements (Based on ASCE 7-10)

Display Height	Braced Column	Spread Footing				Pier and Pier Reinforcement				Anchors and Base Plates**	Column Length
		Footing Length	Footing Width	Footing Depth	Steel Reinforcement	Pier Diameter	Quantity	Size	Hook Length		
8'	W10x17	25'	6' 6"	1' 6"	#4's @12in O.C. T&B	3'	18	#5	8"	Option 3	17'
10'	W8x18	25'	7' 6"	1' 6"	#4's @12in O.C. T&B	3'	18	#5	8"	Option 1	19'
12'	W8x21	25'	8' 6"	1' 6"	#4's @12in O.C. T&B	3'	18	#5	8"	Option 1	21'
14'	W10x22	25'	9'	1' 6"	#4's @12in O.C. T&B	3'	18	#5	8"	Option 3	23'
16'	W10x26	25'	10'	1' 6"	#4's @12in O.C. T&B	3'	18	#5	8"	Option 3	25'
18'	W12x26	25'	11'	1' 6"	#4's @12in O.C. T&B	3'	18	#5	8"	Option 5	27'
20'	W12x30	25'	12'	1' 6"	#4's @12in O.C. T&B	3'	18	#5	8"	Option 5	29'
22'	W12x30	25'	13'	1' 6"	#4's @12in O.C. T&B	3'	18	#5	8"	Option 5	31'
25'	W18x35	25'	14'	1' 6"	#5's @12in O.C. T&B	4'	24	#6	9"	Option 11	34'
30'	W14x43	25'	16'	1' 6"	#5's @12in O.C. T&B	4'	24	#6	9"	Option 9	39'
35'	W18x50	25'	19'	1' 6"	#5's @12in O.C. T&B	4'	24	#6	9"	Option 11	44'
40'	W21x55	25'	21'	1' 6"	#7's @12in O.C. T&B	5'	30	#7	11"	Option 14	49'

Column and Foundation Requirements (Based on ASCE 7-10)

Display Height	Braced Column	Spread Footing				Pier and Pier Reinforcement				Anchors and Base Plates**	Column Length
		Footing Length	Footing Width	Footing Depth	Steel Reinforcement	Pier Diameter	Quantity	Size	Hook Length		
8'	W8x18	30'	6' 6"	1' 6"	#4's @12in O.C. T&B	3'	18	#5	8"	Option 1	17'
10'	W8x21	30'	7' 6"	1' 6"	#4's @12in O.C. T&B	3'	18	#5	8"	Option 1	19'
12'	W10x22	30'	8' 6"	1' 6"	#4's @12in O.C. T&B	3'	18	#5	8"	Option 3	21'
14'	W14x22	30'	9'	1' 6"	#4's @12in O.C. T&B	3'	18	#5	8"	Option 8	23'
16'	W12x26	30'	10'	1' 6"	#4's @12in O.C. T&B	3'	18	#5	8"	Option 5	25'
18'	W12x26	30'	11'	1' 6"	#4's @12in O.C. T&B	3'	18	#5	8"	Option 5	27'
20'	W12x30	30'	12'	1' 6"	#4's @12in O.C. T&B	3'	18	#5	8"	Option 5	29'
22'	W14x34	30'	13'	1' 6"	#4's @12in O.C. T&B	3'	18	#5	8"	Option 8	31'
25'	W16x36	30'	14'	1' 6"	#5's @12in O.C. T&B	4'	24	#6	9"	Option 10	34'
30'	W14x48	30'	17'	1' 6"	#5's @12in O.C. T&B	4'	24	#6	9"	Option 9	39'
35'	W18x55	30'	19'	1' 6"	#5's @12in O.C. T&B	4'	24	#6	9"	Option 11	44'
40'	W21x62	30'	21'	1' 6"	#7's @12in O.C. T&B	5'	30	#7	11"	Option 14	49'

Outdoor Scoreboard
Footing Installation
3 Column
Multi-SectionNevco, Inc.
Greenville, Illinois 62246

Drawing No. 241-0410

Drawn CJS

Date 12/14/18

Sheet 3 of 7

EXPOSURE C (See Note 3)

Column and Foundation Requirements (Based on ASCE 7-10)

Display Height	Braced Column	Spread Footing				Pier and Pier Reinforcement				Anchors and Base Plates**	Column Length
		Footing Length	Footing Width	Footing Depth	Steel Reinforcement	Pier Diameter	Quantity	Size	Hook Length		
8'	W8x18	22'	9'	1' 6"	#4s @12in O.C. T&B	3'	18	#5	8"	Option 1	17'
10'	W10x22	22'	10'	1' 6"	#4s @12in O.C. T&B	3'	18	#5	8"	Option 3	19'
12'	W14x22	22'	12'	1' 6"	#4s @12in O.C. T&B	3'	18	#5	8"	Option 8	21'
14'	W12x26	22'	13'	1' 6"	#4s @12in O.C. T&B	3'	18	#5	8"	Option 5	23'
16'	W12x26	22'	14'	1' 6"	#5s @12in O.C. T&B	3'	18	#5	8"	Option 5	25'
18'	W12x30	22'	15'	1' 6"	#5s @12in O.C. T&B	3'	18	#5	8"	Option 5	27'
20'	W14x34	22'	16'	1' 6"	#5s @12in O.C. T&B	3'	18	#5	8"	Option 8	29'
22'	W16x36	22'	17'	1' 6"	#6s @12in O.C. T&B	4'	24	#6	9"	Option 10	31'
25'	W14x43	22'	19'	1' 6"	#6s @12in O.C. T&B	4'	24	#6	9"	Option 9	34'
30'	W18x50	22'	22'	1' 6"	#7s @12in O.C. T&B	4'	24	#6	9"	Option 11	39'
35'	W21x55	22'	20'	2' 3"	#8s @12in O.C. T&B	5'	30	#7	11"	Option 14	44'
40'	W21x68	22'	21'	2' 6"	#9s @12in O.C. T&B	5'	30	#7	11"	Option 14	49'

Column and Foundation Requirements (Based on ASCE 7-10)

Display Height	Braced Column	Spread Footing				Pier and Pier Reinforcement				Anchors and Base Plates**	Column Length
		Footing Length	Footing Width	Footing Depth	Steel Reinforcement	Pier Diameter	Quantity	Size	Hook Length		
8'	W10x22	26'	9'	1' 6"	#4s @12in O.C. T&B	3'	18	#5	8"	Option 3	17'
10'	W10x26	26'	10'	1' 6"	#4s @12in O.C. T&B	3'	18	#5	8"	Option 3	19'
12'	W12x26	26'	12'	1' 6"	#4s @12in O.C. T&B	3'	18	#5	8"	Option 5	21'
14'	W12x30	26'	13'	1' 6"	#4s @12in O.C. T&B	3'	18	#5	8"	Option 5	23'
16'	W14x34	26'	14'	1' 6"	#5s @12in O.C. T&B	3'	18	#5	8"	Option 8	25'
18'	W16x36	26'	15'	1' 6"	#5s @12in O.C. T&B	4'	24	#6	9"	Option 10	27'
20'	W16x40	26'	16'	1' 6"	#5s @12in O.C. T&B	4'	24	#6	9"	Option 10	29'
22'	W21x44	26'	17'	1' 6"	#6s @12in O.C. T&B	5'	30	#7	11"	Option 14	31'
25'	W18x50	26'	19'	1' 6"	#6s @12in O.C. T&B	4'	24	#6	9"	Option 11	34'
30'	W21x62	26'	22'	1' 6"	#7s @12in O.C. T&B	5'	30	#7	11"	Option 14	39'
35'	W24x68	26'	20'	2' 3"	#8s @12in O.C. T&B	5'	30	#7	11"	Option 16	44'
40'	W24x84	26'	21'	2' 6"	#9s @12in O.C. T&B	5'	30	#7	11"	Option 16	49'

Column and Foundation Requirements (Based on ASCE 7-10)

Display Height	Braced Column	Spread Footing				Pier and Pier Reinforcement				Anchors and Base Plates**	Column Length
		Footing Length	Footing Width	Footing Depth	Steel Reinforcement	Pier Diameter	Quantity	Size	Hook Length		
8'	W10x22	30'	9'	1' 6"	#4s @12in O.C. T&B	3'	18	#5	8"	Option 3	17'
10'	W12x26	30'	10'	1' 6"	#4s @12in O.C. T&B	3'	18	#5	8"	Option 5	19'
12'	W12x30	30'	12'	1' 6"	#4s @12in O.C. T&B	3'	18	#5	8"	Option 5	21'
14'	W14x34	30'	13'	1' 6"	#4s @12in O.C. T&B	3'	18	#5	8"	Option 8	23'
16'	W16x36	30'	14'	1' 6"	#5s @12in O.C. T&B	4'	24	#6	9"	Option 10	25'
18'	W16x40	30'	15'	1' 6"	#5s @12in O.C. T&B	4'	24	#6	9"	Option 10	27'
20'	W21x44	30'	16'	1' 6"	#5s @12in O.C. T&B	5'	30	#7	11"	Option 14	29'
22'	W16x50	30'	17'	1' 6"	#6s @12in O.C. T&B	4'	24	#6	9"	Option 10	31'
25'	W18x55	30'	19'	1' 6"	#6s @12in O.C. T&B	4'	24	#6	9"	Option 11	34'
30'	W21x68	30'	22'	1' 6"	#7s @12in O.C. T&B	5'	30	#7	11"	Option 14	39'
35'	W24x76	30'	21'	2' 3"	#8s @12in O.C. T&B	5'	30	#7	11"	Option 16	44'
40'	W24x94	30'	22'	2' 6"	#9s @12in O.C. T&B	5'	30	#7	11"	Option 16	49'

EXPOSURE B (See Note 4)

Column and Foundation Requirements (Based on ASCE 7-10)

Display Height	Braced Column	Spread Footing				Pier and Pier Reinforcement				Anchors and Base Plates**	Column Length
		Footing Length	Footing Width	Footing Depth	Steel Reinforcement	Pier Diameter	Quantity	Size	Hook Length		
8'	W10x17	22'	7' 6"	1' 6"	#4s @12in O.C. T&B	3'	18	#5	8"	Option 3	17'
10'	W8x18	22'	8' 6"	1' 6"	#4s @12in O.C. T&B	3'	18	#5	8"	Option 1	19'
12'	W8x21	22'	10'	1' 6"	#4s @12in O.C. T&B	3'	18	#5	8"	Option 1	21'
14'	W10x22	22'	11'	1' 6"	#4s @12in O.C. T&B	3'	18	#5	8"	Option 3	23'
16'	W14x22	22'	12'	1' 6"	#4s @12in O.C. T&B	3'	18	#5	8"	Option 8	25'
18'	W10x26	22'	13'	1' 6"	#4s @12in O.C. T&B	3'	18	#5	8"	Option 3	27'
20'	W12x26	22'	14'	1' 6"	#5s @12in O.C. T&B	3'	18	#5	8"	Option 5	29'
22'	W12x30	22'	15'	1' 6"	#5s @12in O.C. T&B	3'	18	#5	8"	Option 5	31'
25'	W14x34	22'	16'	1' 6"	#5s @12in O.C. T&B	3'	18	#5	8"	Option 8	34'
30'	W16x40	22'	19'	1' 6"	#6s @12in O.C. T&B	4'	24	#6	9"	Option 10	39'
35'	W16x50	22'	21'	1' 6"	#7s @12in O.C. T&B	4'	24	#6	9"	Option 10	44'
40'	W18x55	22'	21'	2'	#8s @12in O.C. T&B	4'	24	#6	9"	Option 11	49'

Column and Foundation Requirements (Based on ASCE 7-10)

Display Height	Braced Column	Spread Footing				Pier and Pier Reinforcement				Anchors and Base Plates**	Column Length
		Footing Length	Footing Width	Footing Depth	Steel Reinforcement	Pier Diameter	Quantity	Size	Hook Length		
8'	W8x18	26'	7' 6"	1' 6"	#4s @12in O.C. T&B	3'	18	#5	8"	Option 1	17'
10'	W8x21	26'	8' 6"	1' 6"	#4s @12in O.C. T&B	3'	18	#5	8"	Option 1	19'
12'	W10x22	26'	10'	1' 6"	#4s @12in O.C. T&B	3'	18	#5	8"	Option 3	21'
14'	W10x26	26'	11'	1' 6"	#4s @12in O.C. T&B	3'	18	#5	8"	Option 3	23'
16'	W12x26	26'	12'	1' 6"	#4s @12in O.C. T&B	3'	18	#5	8"	Option 5	25'
18'	W12x30	26'	13'	1' 6"	#4s @12in O.C. T&B	3'	18	#5	8"	Option 5	27'
20'	W14x34	26'	14'	1' 6"	#5s @12in O.C. T&B	3'	18	#5	8"	Option 8	29'
22'	W18x55	26'	15'	1' 6"	#5s @12in O.C. T&B	4'	24	#6	9"	Option 11	31'
25'	W16x40	26'	16'	1' 6"	#5s @12in O.C. T&B	4'	24	#6	9"	Option 10	34'
30'	W18x50	26'	19'	1' 6"	#6s @12in O.C. T&B	4'	24	#6	9"	Option 11	39'
35'	W21x55	26'	21'	1' 6"	#7s @12in O.C. T&B	5'	30	#7	11"	Option 14	44'
40'	W21x68	26'	21'	2'	#8s @12in O.C. T&B	5'	30	#7	11"	Option 14	49'

Column and Foundation Requirements (Based on ASCE 7-10)

Display Height	Braced Column	Spread Footing				Pier and Pier Reinforcement				Anchors and Base Plates**	Column Length
		Footing Length	Footing Width	Footing Depth	Steel Reinforcement	Pier Diameter	Quantity	Size	Hook Length		
8'	W8x21	30'	7' 6"	1' 6"	#4s @12in O.C. T&B	3'	18	#5	8"	Option 1	17'
10'	W10x22	30'	8' 6"	1' 6"	#4s @12in O.C. T&B	3'	18	#5	8"	Option 3	19'
12'	W10x26	30'	10'	1' 6"	#4s @12in O.C. T&B	3'	18	#5	8"	Option 3	21'
14'	W12x26	30'	11'	1' 6"	#4s @12in O.C. T&B	3'	18	#5	8"	Option 5	23'
16'	W12x30	30'	12'	1' 6"	#4s @12in O.C. T&B	3'	18	#5	8"	Option 5	25'
18'	W14x34	30'	13'	1' 6"	#4s @12in O.C. T&B	3'	18	#5	8"	Option 8	27'
20'	W18x35	30'	14'	1' 6"	#5s @12in O.C. T&B	4'	24	#6	9"	Option 11	29'
22'	W16x40	30'	15'	1' 6"	#5s @12in O.C. T&B	4'	24	#6	9"	Option 10	31'
25'	W21x44	30'	16'	1' 6"	#5s @12in O.C. T&B	5'	30	#7	11"	Option 14	34'
30'	W18x55	30'	19'	1' 6"	#6s @12in O.C. T&B	4'	24	#6	9"	Option 11	39'
35'	W21x62	30'	21'	1' 6"	#7s @12in O.C. T&B	5'	30	#7	11"	Option 14	44'
40'	W24x68	30'	21'	2'	#8s @12in O.C. T&B	5'	30	#7	11"	Option 16	49'

Chart Notes:

1. If the display height is between chart values shown above, use the next highest value.
2. All installations will be braced with laterals placed at 10' increments on front and back of the column starting at 10' above grade. See 241-0414 for lateral sizes.
3. Wind loading figured at **Exposure "C" - Open terrain** with scattered obstructions having heights generally less than 30 feet. This category includes flat open country, grasslands, and all water surfaces in hurricane prone areas.
4. Wind loading figured at **Exposure "B" - Urban and suburban areas**, wooded areas, or other terrain with numerous closely spaced obstructions having the size of single-family dwellings or larger. These areas prevail in the upwind direction for a distance of 2600 feet or 20 times the structure height, whichever is greater.
5. **Please see DWG-0818 to determine base plate and anchor sizes from the option listed above.
6. Quantity of Pier reinforcements listed is **PER PIER**.

Outdoor Scoreboard
Footing Installation
3 Column
Multi-Section



Nevco, Inc.
Greenville, Illinois 62246

Drawing No. 241-0410

Drawn CJS Date 12/14/18


Sheet 4 of 7

4		3		2		1		Rev		A	
130 MPH WIND ZONES											
EXPOSURE C (See Note 3)											
Column and Foundation Requirements (Based on ASCE 7-10)											
Display Height	Braced Column	Spread Footing				Pier and Pier Reinforcement				Anchors and Base Plates**	Column Length
		Footing Length	Footing Width	Footing Depth	Steel Reinforcement	Pier Diameter	Quantity	Size	Hook Length		
8	W8x21	22	10	1' 6"	#4s @12in O.C. T&B	3'	18	#5	8"	Option 1	17'
10	W10x22	22	11	1' 6"	#4s @12in O.C. T&B	3'	18	#5	8"	Option 3	19'
12	W10x26	22	13	1' 6"	#4s @12in O.C. T&B	3'	18	#5	8"	Option 3	21'
14	W12x26	22	14	1' 6"	#5s @12in O.C. T&B	3'	18	#5	8"	Option 5	23'
16	W12x30	22	15	1' 6"	#5s @12in O.C. T&B	3'	18	#5	8"	Option 5	25'
18	W14x34	22	16	1' 6"	#5s @12in O.C. T&B	3'	18	#5	8"	Option 8	27'
20	W16x36	22	18	1' 6"	#6s @12in O.C. T&B	4'	24	#6	9"	Option 10	29'
22	W16x40	22	19	1' 6"	#6s @12in O.C. T&B	4'	24	#6	9"	Option 10	31'
25	W16x50	22	21	1' 6"	#7s @12in O.C. T&B	4'	24	#6	9"	Option 10	34'
30	W18x55	22	21	2	#8s @12in O.C. T&B	4'	24	#6	9"	Option 11	39'
35	W21x62	22	21	2' 6"	#9s @12in O.C. T&B	5'	30	#7	11"	Option 14	44'
40	W24x68	22	21	3	#10s @12in O.C. T&B	5'	30	#7	11"	Option 16	49'
Column and Foundation Requirements (Based on ASCE 7-10)											
Display Height	Braced Column	Spread Footing				Pier and Pier Reinforcement				Anchors and Base Plates**	Column Length
		Footing Length	Footing Width	Footing Depth	Steel Reinforcement	Pier Diameter	Quantity	Size	Hook Length		
8	W14x22	26	10	1' 6"	#4s @12in O.C. T&B	3'	18	#5	8"	Option 8	17'
10	W12x26	26	11	1' 6"	#4s @12in O.C. T&B	3'	18	#5	8"	Option 5	19'
12	W12x30	26	13	1' 6"	#4s @12in O.C. T&B	3'	18	#5	8"	Option 5	21'
14	W14x34	26	14	1' 6"	#5s @12in O.C. T&B	3'	18	#5	8"	Option 8	23'
16	W16x36	26	15	1' 6"	#5s @12in O.C. T&B	4'	24	#6	9"	Option 10	25'
18	W16x40	26	16	1' 6"	#5s @12in O.C. T&B	4'	24	#6	9"	Option 10	27'
20	W21x44	26	18	1' 6"	#6s @12in O.C. T&B	5'	30	#7	11"	Option 14	29'
22	W16x50	26	19	1' 6"	#6s @12in O.C. T&B	4'	24	#6	9"	Option 10	31'
25	W21x55	26	21	1' 6"	#7s @12in O.C. T&B	5'	30	#7	11"	Option 14	34'
30	W21x68	26	21	2	#8s @12in O.C. T&B	5'	30	#7	11"	Option 14	39'
35	W24x76	26	21	2' 6"	#9s @12in O.C. T&B	5'	30	#7	11"	Option 16	44'
40	W24x94	26	21	3	#10s @12in O.C. T&B	5'	30	#7	11"	Option 16	49'
Column and Foundation Requirements (Based on ASCE 7-10)											
Display Height	Braced Column	Spread Footing				Pier and Pier Reinforcement				Anchors and Base Plates**	Column Length
		Footing Length	Footing Width	Footing Depth	Steel Reinforcement	Pier Diameter	Quantity	Size	Hook Length		
8	W10x26	30	10	1' 6"	#4s @12in O.C. T&B	3'	18	#5	8"	Option 3	17'
10	W12x26	30	11	1' 6"	#4s @12in O.C. T&B	3'	18	#5	8"	Option 5	19'
12	W14x30	30	13	1' 6"	#4s @12in O.C. T&B	3'	18	#5	8"	Option 8	21'
14	W18x36	30	14	1' 6"	#5s @12in O.C. T&B	4'	24	#6	9"	Option 11	23'
16	W16x40	30	15	1' 6"	#5s @12in O.C. T&B	4'	24	#6	9"	Option 10	25'
18	W21x44	30	16	1' 6"	#5s @12in O.C. T&B	5'	30	#7	11"	Option 14	27'
20	W16x50	30	18	1' 6"	#6s @12in O.C. T&B	4'	24	#6	9"	Option 10	29'
22	W18x55	30	19	1' 6"	#6s @12in O.C. T&B	4'	24	#6	9"	Option 11	31'
25	W21x55	30	21	1' 6"	#7s @12in O.C. T&B	5'	30	#7	11"	Option 14	34'
30	W24x68	30	21	2	#8s @12in O.C. T&B	5'	30	#7	11"	Option 16	39'
35	W24x84	30	21	2' 6"	#9s @12in O.C. T&B	5'	30	#7	11"	Option 16	44'
40	W21x101	30	21	3	#10s @12in O.C. T&B	5'	30	#7	11"	Option 15	49'
Chart Notes: 1. If the display height is between chart values shown above, use the next highest value. 2. All installations will be braced with laterals placed at 10' increments on front and back of the column starting at 10' above grade. See 241-0414 for lateral sizes. 3. Wind loading figured at Exposure "C" - Open terrain with scattered obstructions having heights generally less than 30 feet. This category includes flat open country, grasslands, and all water surfaces in hurricane prone areas. 4. Wind loading figured at Exposure "B" - Urban and suburban areas , wooded areas, or other terrain with numerous closely spaced obstructions having the size of single-family dwellings or larger. These areas prevail in the upwind direction for a distance of 2600 feet or 20 times the structure height, whichever is greater. 5. **Please see DWG-0818 to determine base plate and anchor sizes from the option listed above. 6. Quantity of Pier reinforcements listed is PER PIER .											
4		3		2		1					

20 FEET LONG INSTALLATIONS

24 FEET LONG INSTALLATIONS

28 FEET LONG INSTALLATIONS

Outdoor Scoreboard Footing Installation 3 Column Multi-Section						 Nevco, Inc. Greenville, Illinois 62246					
Drawing No. 241-0410											
Drawn CJS			Date 12/14/18			Sheet 5 of 7					

20 FEET LONG INSTALLATIONS

24 FEET LONG INSTALLATIONS

28 FEET LONG INSTALLATIONS

150 MPH WIND ZONES

EXPOSURE C (See Note 3)

Column and Foundation Requirements (Based on ASCE 7-10)

Display Height	Braced Column	Spread Footing				Pier and Pier Reinforcement				Anchors and Base Plates**	Column Length
		Footing Length	Footing Width	Footing Depth	Steel Reinforcement	Pier Diameter	Quantity	Size	Hook Length		
8'	W10x22	22	11'	1'6"	#4's @12in O.C. T&B	3'	18	#5	8"	Option 3	17'
10'	W12x26	22	13'	1'6"	#4's @12in O.C. T&B	3'	18	#5	8"	Option 5	19'
12'	W12x30	22	15'	1'6"	#5's @12in O.C. T&B	3'	18	#5	8"	Option 5	21'
14'	W14x34	22	16'	1'6"	#5's @12in O.C. T&B	3'	18	#5	8"	Option 8	23'
16'	W18x35	22	17'	1'6"	#6's @12in O.C. T&B	4'	24	#6	9"	Option 11	25'
18'	W16x40	22	19'	1'6"	#6's @12in O.C. T&B	4'	24	#6	9"	Option 10	27'
20'	W21x44	22	20'	1'6"	#7's @12in O.C. T&B	5'	30	#7	11"	Option 14	29'
22'	W18x50	22	21'	1'6"	#7's @12in O.C. T&B	4'	24	#6	9"	Option 11	31'
25'	W18x55	22	21'	2'	#8's @12in O.C. T&B	4'	24	#6	9"	Option 11	34'
30'	W21x68	22	21'	2'6"	#9's @12in O.C. T&B	5'	30	#7	11"	Option 14	39'
35'	W24x76	22	22'	3'	#10's @12in O.C. T&B	5'	30	#7	11"	Option 16	44'
40'	W24x94	22	22'	3'9"	#11's @12in O.C. T&B	5'	30	#7	11"	Option 16	49'

Column and Foundation Requirements (Based on ASCE 7-10)

Display Height	Braced Column	Spread Footing				Pier and Pier Reinforcement				Anchors and Base Plates**	Column Length
		Footing Length	Footing Width	Footing Depth	Steel Reinforcement	Pier Diameter	Quantity	Size	Hook Length		
8'	W12x26	26'	11'	1'6"	#4's @12in O.C. T&B	3'	18	#5	8"	Option 5	17'
10'	W12x30	26'	13'	1'6"	#4's @12in O.C. T&B	3'	18	#5	8"	Option 5	19'
12'	W14x34	26'	15'	1'6"	#5's @12in O.C. T&B	3'	18	#5	8"	Option 8	21'
14'	W16x40	26'	16'	1'6"	#5's @12in O.C. T&B	4'	24	#6	9"	Option 10	23'
16'	W21x44	26'	17'	1'6"	#6's @12in O.C. T&B	5'	30	#7	11"	Option 14	25'
18'	W16x50	26'	19'	1'6"	#6's @12in O.C. T&B	4'	24	#6	9"	Option 10	27'
20'	W18x55	26'	20'	1'6"	#7's @12in O.C. T&B	4'	24	#6	9"	Option 11	29'
22'	W21x55	26'	22'	1'6"	#7's @12in O.C. T&B	5'	30	#7	11"	Option 14	31'
25'	W21x68	26'	21'	2'	#8's @12in O.C. T&B	5'	30	#7	11"	Option 14	34'
30'	W24x76	26'	21'	2'6"	#9's @12in O.C. T&B	5'	30	#7	11"	Option 16	39'
35'	W24x94	26'	22'	3'	#10's @12in O.C. T&B	5'	30	#7	11"	Option 16	44'
40'	W24x104	26'	22'	3'9"	#11's @12in O.C. T&B	5'	30	#7	11"	Option 17	49'

Column and Foundation Requirements (Based on ASCE 7-10)

Display Height	Braced Column	Spread Footing				Pier and Pier Reinforcement				Anchors and Base Plates**	Column Length
		Footing Length	Footing Width	Footing Depth	Steel Reinforcement	Pier Diameter	Quantity	Size	Hook Length		
8'	W12x26	30'	11'	1'6"	#4's @12in O.C. T&B	3'	18	#5	8"	Option 5	17'
10'	W14x34	30'	13'	1'6"	#4's @12in O.C. T&B	3'	18	#5	8"	Option 8	19'
12'	W16x36	30'	15'	1'6"	#5's @12in O.C. T&B	4'	24	#6	9"	Option 10	21'
14'	W14x43	30'	16'	1'6"	#5's @12in O.C. T&B	4'	24	#6	9"	Option 9	23'
16'	W16x50	30'	17'	1'6"	#6's @12in O.C. T&B	4'	24	#6	9"	Option 10	25'
18'	W18x55	30'	19'	1'6"	#6's @12in O.C. T&B	4'	24	#6	9"	Option 11	27'
20'	W21x55	30'	20'	1'6"	#7's @12in O.C. T&B	5'	30	#7	11"	Option 14	29'
22'	W21x62	30'	22'	1'6"	#7's @12in O.C. T&B	5'	30	#7	11"	Option 14	31'
25'	W24x68	30'	21'	2'	#8's @12in O.C. T&B	5'	30	#7	11"	Option 16	34'
30'	W24x84	30'	22'	2'6"	#9's @12in O.C. T&B	5'	30	#7	11"	Option 16	39'
35'	W24x104	30'	22'	3'	#10's @12in O.C. T&B	5'	30	#7	11"	Option 17	44'
40'	W24x131	30'	22'	3'9"	#11's @12in O.C. T&B	5'	30	#7	11"	Option 17	49'

Chart Notes:

1. If the display height is between chart values shown above, use the next highest value.
2. All installations will be braced with laterals placed at 10' increments on front and back of the column starting at 10' above grade. See 241-0414 for lateral sizes.
3. Wind loading figured at **Exposure "C" - Open terrain** with scattered obstructions having heights generally less than 30 feet. This category includes flat open country, grasslands, and all water surfaces in hurricane prone areas.
4. Wind loading figured at **Exposure "B" - Urban and suburban areas**, wooded areas, or other terrain with numerous closely spaced obstructions having the size of single-family dwellings or larger. These areas prevail in the upwind direction for a distance of 2600 feet or 20 times the structure height, whichever is greater.
5. **Please see DWG-0818 to determine base plate and anchor sizes from the option listed above.
6. Quantity of Pier reinforcements listed is **PER PIER**.

EXPOSURE B (See Note 4)

Column and Foundation Requirements (Based on ASCE 7-10)

Display Height	Braced Column	Spread Footing				Pier and Pier Reinforcement				Anchors and Base Plates**	Column Length
		Footing Length	Footing Width	Footing Depth	Steel Reinforcement	Pier Diameter	Quantity	Size	Hook Length		
8'	W8x21	22	9'	1'6"	#4's @12in O.C. T&B	3'	18	#5	8"	Option 1	17'
10'	W10x22	22	11'	1'6"	#4's @12in O.C. T&B	3'	18	#5	8"	Option 3	19'
12'	W10x26	22	12'	1'6"	#4's @12in O.C. T&B	3'	18	#5	8"	Option 3	21'
14'	W12x26	22	13'	1'6"	#5's @12in O.C. T&B	3'	18	#5	8"	Option 5	23'
16'	W12x30	22	15'	1'6"	#5's @12in O.C. T&B	3'	18	#5	8"	Option 5	25'
18'	W14x34	22	16'	1'6"	#5's @12in O.C. T&B	3'	18	#5	8"	Option 8	27'
20'	W14x34	22	17'	1'6"	#5's @12in O.C. T&B	3'	18	#5	8"	Option 8	29'
22'	W16x40	22	18'	1'6"	#5's @12in O.C. T&B	4'	24	#6	9"	Option 10	31'
25'	W21x44	22	20'	1'6"	#7's @12in O.C. T&B	5'	30	#7	11"	Option 14	34'
30'	W18x55	22	21'	2'	#8's @12in O.C. T&B	4'	24	#6	9"	Option 11	39'
35'	W21x62	22	21'	2'6"	#9's @12in O.C. T&B	5'	30	#7	11"	Option 14	44'
40'	W24x68	22	21'	3'	#10's @12in O.C. T&B	5'	30	#7	11"	Option 16	49'

Column and Foundation Requirements (Based on ASCE 7-10)

Display Height	Braced Column	Spread Footing				Pier and Pier Reinforcement				Anchors and Base Plates**	Column Length
		Footing Length	Footing Width	Footing Depth	Steel Reinforcement	Pier Diameter	Quantity	Size	Hook Length		
8'	W10x22	26'	9'	1'6"	#4's @12in O.C. T&B	3'	18	#5	8"	Option 3	17'
10'	W10x26	26'	11'	1'6"	#4's @12in O.C. T&B	3'	18	#5	8"	Option 3	19'
12'	W12x26	26'	12'	1'6"	#4's @12in O.C. T&B	3'	18	#5	8"	Option 5	21'
14'	W14x30	26'	13'	1'6"	#5's @12in O.C. T&B	3'	18	#5	8"	Option 8	23'
16'	W18x35	26'	15'	1'6"	#5's @12in O.C. T&B	4'	24	#6	9"	Option 11	25'
18'	W16x40	26'	16'	1'6"	#5's @12in O.C. T&B	4'	24	#6	9"	Option 10	27'
20'	W14x43	26'	17'	1'6"	#6's @12in O.C. T&B	4'	24	#6	9"	Option 9	29'
22'	W16x50	26'	18'	1'6"	#6's @12in O.C. T&B	4'	24	#6	9"	Option 10	31'
25'	W18x55	26'	20'	1'6"	#7's @12in O.C. T&B	4'	24	#6	9"	Option 11	34'
30'	W21x68	26'	21'	2'	#8's @12in O.C. T&B	5'	30	#7	11"	Option 14	39'
35'	W24x76	26'	26'	2'6"	#9's @12in O.C. T&B	5'	30	#7	11"	Option 16	44'
40'	W24x94	26'	29'	3'	#10's @12in O.C. T&B	5'	30	#7	11"	Option 16	49'

Column and Foundation Requirements (Based on ASCE 7-10)

Display Height	Braced Column	Spread Footing				Pier and Pier Reinforcement				Anchors and Base Plates**	Column Length
		Footing Length	Footing Width	Footing Depth	Steel Reinforcement	Pier Diameter	Quantity	Size	Hook Length		
8'	W14x22	30'	9'	1'6"	#4's @12in O.C. T&B	3'	18	#5	8"	Option 8	17'
10'	W12x26	30'	11'	1'6"	#4's @12in O.C. T&B	3'	18	#5	8"	Option 5	19'
12'	W12x30	30'	12'	1'6"	#4's @12in O.C. T&B	3'	18	#5	8"	Option 5	21'
14'	W14x34	30'	13'	1'6"	#5's @12in O.C. T&B	3'	18	#5	8"	Option 8	23'
16'	W16x36	30'	15'	1'6"	#5's @12in O.C. T&B	4'	24	#6	9"	Option 10	25'
18'	W14x43	30'	16'	1'6"	#5's @12in O.C. T&B	4'	24	#6	9"	Option 9	27'
20'	W14x48	30'	17'	1'6"	#6's @12in O.C. T&B	4'	24	#6	9"	Option 9	29'
22'	W18x50	30'	18'	1'6"	#6's @12in O.C. T&B	4'	24	#6	9"	Option 11	31'
25'	W21x55	30'	20'	1'6"	#7's @12in O.C. T&B	5'	30	#7	11"	Option 14	34'
30'	W24x68	30'	21'	2'	#8's @12in O.C. T&B	5'	30	#7	11"	Option 16	39'
35'	W24x84	30'	21'	2'6"	#9's @12in O.C. T&B	5'	30	#7	11"	Option 16	44'
40'	W21x101	30'	21'	3'	#10's @12in O.C. T&B	5'	30	#7	11"	Option 15	49'

Outdoor Scoreboard
Footing Installation
3 Column
Multi-SectionNevco, Inc.
Greenville, Illinois 62246

Drawing No. 241-0410

Drawn CJS Date 12/14/18

Sheet 6 of 7

180 MPH WIND ZONES

EXPOSURE C (See Note 3)

Column and Foundation Requirements (Based on ASCE 7-10)

Display Height	Braced Column	Spread Footing				Pier and Pier Reinforcement				Anchors and Base Plates**	Column Length
		Footing Length	Footing Width	Footing Depth	Steel Reinforcement	Pier Diameter	Quantity	Size	Hook Length		
8'	W12x26	22'	14'	1' 6"	#4s @12in O.C. T&B	3'	18	#5	8"	Option 5	17'
10'	W14x30	22'	16'	1' 6"	#5s @12in O.C. T&B	3'	18	#5	8"	Option 8	19'
12'	W18x35	22'	17'	1' 6"	#6s @12in O.C. T&B	4'	24	#6	9"	Option 11	21'
14'	W16x40	22'	19'	1' 6"	#6s @12in O.C. T&B	4'	24	#6	9"	Option 10	23'
16'	W21x44	22'	21'	1' 6"	#7s @12in O.C. T&B	5'	30	#7	11"	Option 14	25'
18'	W18x50	22'	22'	1' 6"	#7s @12in O.C. T&B	4'	24	#6	9"	Option 11	27'
20'	W18x55	22'	22'	1' 9"	#8s @12in O.C. T&B	4'	24	#6	9"	Option 11	29'
22'	W21x62	22'	22'	2'	#8s @12in O.C. T&B	5'	30	#7	11"	Option 14	31'
25'	W21x68	22'	22'	2' 6"	#9s @12in O.C. T&B	5'	30	#7	11"	Option 14	34'
30'	W24x84	22'	22'	3' 3"	#10s @12in O.C. T&B	5'	30	#7	11"	Option 16	39'
35'	W21x101	22'	22'	4' 3"	#12s @12in O.C. T&B	5'	30	#7	11"	Option 15	44'
40'	W24x117	22'	22'	5' 3"	#12s @12in O.C. T&B	5'	30	#7	11"	Option 17	49'

Column and Foundation Requirements (Based on ASCE 7-10)

Display Height	Braced Column	Spread Footing				Pier and Pier Reinforcement				Anchors and Base Plates**	Column Length
		Footing Length	Footing Width	Footing Depth	Steel Reinforcement	Pier Diameter	Quantity	Size	Hook Length		
8'	W14x34	26'	14'	1' 6"	#5s @12in O.C. T&B	3'	18	#5	8"	Option 8	17'
10'	W16x36	26'	15'	1' 6"	#5s @12in O.C. T&B	4'	24	#6	9"	Option 10	19'
12'	W21x44	26'	17'	1' 6"	#6s @12in O.C. T&B	5'	30	#7	11"	Option 14	21'
14'	W18x50	26'	19'	1' 6"	#6s @12in O.C. T&B	4'	24	#6	9"	Option 11	23'
16'	W18x55	26'	21'	1' 6"	#7s @12in O.C. T&B	4'	24	#6	9"	Option 11	25'
18'	W21x62	26'	22'	1' 6"	#7s @12in O.C. T&B	5'	30	#7	11"	Option 14	27'
20'	W21x68	26'	22'	1' 9"	#8s @12in O.C. T&B	5'	30	#7	11"	Option 14	29'
22'	W24x68	26'	22'	2'	#8s @12in O.C. T&B	5'	30	#7	11"	Option 16	31'
25'	W24x84	26'	22'	2' 6"	#9s @12in O.C. T&B	5'	30	#7	11"	Option 16	34'
30'	W24x104	26'	22'	3' 3"	#11s @12in O.C. T&B	5'	30	#7	11"	Option 17	39'
35'	W24x131	26'	22'	4' 3"	#12s @12in O.C. T&B	5'	30	#7	11"	Option 17	44'
40'	W24x146	26'	22'	5' 3"	#12s @12in O.C. T&B	5'	30	#7	11"	Option 17	49'

Column and Foundation Requirements (Based on ASCE 7-10)

Display Height	Braced Column	Spread Footing				Pier and Pier Reinforcement				Anchors and Base Plates**	Column Length
		Footing Length	Footing Width	Footing Depth	Steel Reinforcement	Pier Diameter	Quantity	Size	Hook Length		
8'	W14x34	30'	14'	1' 6"	#5s @12in O.C. T&B	3'	18	#5	8"	Option 8	17'
10'	W16x40	30'	15'	1' 6"	#5s @12in O.C. T&B	4'	24	#6	9"	Option 10	19'
12'	W14x48	30'	17'	1' 6"	#6s @12in O.C. T&B	4'	24	#6	9"	Option 9	21'
14'	W18x55	30'	19'	1' 6"	#6s @12in O.C. T&B	4'	24	#6	9"	Option 11	23'
16'	W21x55	30'	21'	1' 6"	#7s @12in O.C. T&B	5'	30	#7	11"	Option 14	25'
18'	W21x68	30'	22'	1' 6"	#7s @12in O.C. T&B	5'	30	#7	11"	Option 14	27'
20'	W24x68	30'	22'	2'	#8s @12in O.C. T&B	5'	30	#7	11"	Option 16	29'
22'	W24x76	30'	22'	2' 3"	#8s @12in O.C. T&B	5'	30	#7	11"	Option 16	31'
25'	W24x94	30'	22'	2' 6"	#9s @12in O.C. T&B	5'	30	#7	11"	Option 16	34'
30'	W24x117	30'	22'	3' 6"	#11s @12in O.C. T&B	5'	30	#7	11"	Option 17	39'
35'	W24x146	30'	22'	4' 3"	#12s @12in O.C. T&B	5'	30	#7	11"	Option 17	44'
40'	W24x176	30'	22'	5' 3"	#12s @12in O.C. T&B	5'	30	#7	11"	Option 18	49'

EXPOSURE B (See Note 4)

Column and Foundation Requirements (Based on ASCE 7-10)

Display Height	Braced Column	Spread Footing				Pier and Pier Reinforcement				Anchors and Base Plates**	Column Length
		Footing Length	Footing Width	Footing Depth	Steel Reinforcement	Pier Diameter	Quantity	Size	Hook Length		
8'	W10x22	22'	11'	1' 6"	#4s @12in O.C. T&B	3'	18	#5	8"	Option 3	17'
10'	W10x26	22'	13'	1' 6"	#4s @12in O.C. T&B	3'	18	#5	8"	Option 3	19'
12'	W12x30	22'	15'	1' 6"	#5s @12in O.C. T&B	3'	18	#5	8"	Option 5	21'
14'	W14x34	22'	16'	1' 6"	#5s @12in O.C. T&B	3'	18	#5	8"	Option 8	23'
16'	W18x35	22'	17'	1' 6"	#5s @12in O.C. T&B	4'	24	#6	9"	Option 11	25'
18'	W16x40	22'	19'	1' 6"	#5s @12in O.C. T&B	4'	24	#6	9"	Option 10	27'
20'	W21x44	22'	21'	1' 6"	#7s @12in O.C. T&B	5'	30	#7	11"	Option 14	29'
22'	W18x50	22'	21'	1' 9"	#7s @12in O.C. T&B	4'	24	#6	9"	Option 11	31'
25'	W21x55	22'	21'	2'	#8s @12in O.C. T&B	5'	30	#7	11"	Option 14	34'
30'	W21x68	22'	22'	2' 6"	#9s @12in O.C. T&B	5'	30	#7	11"	Option 14	39'
35'	W24x76	22'	22'	3' 3"	#10s @12in O.C. T&B	5'	30	#7	11"	Option 16	44'
40'	W24x94	22'	22'	4'	#12s @12in O.C. T&B	5'	30	#7	11"	Option 16	49'

Column and Foundation Requirements (Based on ASCE 7-10)

Display Height	Braced Column	Spread Footing				Pier and Pier Reinforcement				Anchors and Base Plates**	Column Length
		Footing Length	Footing Width	Footing Depth	Steel Reinforcement	Pier Diameter	Quantity	Size	Hook Length		
8'	W12x26	26'	11'	1' 6"	#4s @12in O.C. T&B	3'	18	#5	8"	Option 5	17'
10'	W12x30	26'	13'	1' 6"	#4s @12in O.C. T&B	3'	18	#5	8"	Option 5	19'
12'	W14x34	26'	15'	1' 6"	#5s @12in O.C. T&B	3'	18	#5	8"	Option 8	21'
14'	W16x40	26'	16'	1' 6"	#5s @12in O.C. T&B	4'	24	#6	9"	Option 10	23'
16'	W21x44	26'	17'	1' 6"	#5s @12in O.C. T&B	5'	30	#7	11"	Option 14	25'
18'	W16x50	26'	19'	1' 6"	#6s @12in O.C. T&B	4'	24	#6	9"	Option 10	27'
20'	W18x55	26'	21'	1' 6"	#7s @12in O.C. T&B	4'	24	#6	9"	Option 11	29'
22'	W21x55	26'	21'	1' 9"	#7s @12in O.C. T&B	5'	30	#7	11"	Option 14	31'
25'	W21x68	26'	21'	2'	#8s @12in O.C. T&B	5'	30	#7	11"	Option 14	34'
30'	W24x84	26'	22'	2' 6"	#9s @12in O.C. T&B	5'	30	#7	11"	Option 16	39'
35'	W21x101	26'	22'	3' 3"	#10s @12in O.C. T&B	5'	30	#7	11"	Option 15	44'
40'	W24x117	26'	22'	4'	#12s @12in O.C. T&B	5'	30	#7	11"	Option 17	49'

Column and Foundation Requirements (Based on ASCE 7-10)

Display Height	Braced Column	Spread Footing				Pier and Pier Reinforcement				Anchors and Base Plates**	Column Length
		Footing Length	Footing Width	Footing Depth	Steel Reinforcement	Pier Diameter	Quantity	Size	Hook Length		
8'	W12x26	30'	11'	1' 6"	#4s @12in O.C. T&B	3'	18	#5	8"	Option 5	17'
10'	W14x34	30'	13'	1' 6"	#4s @12in O.C. T&B	3'	18	#5	8"	Option 8	19'
12'	W16x36	30'	15'	1' 6"	#5s @12in O.C. T&B	4'	24	#6	9"	Option 10	21'
14'	W16x40	30'	16'	1' 6"	#5s @12in O.C. T&B	4'	24	#6	9"	Option 10	23'
16'	W16x50	30'	17'	1' 6"	#6s @12in O.C. T&B	4'	24	#6	9"	Option 10	25'
18'	W18x55	30'	19'	1' 6"	#6s @12in O.C. T&B	4'	24	#6	9"	Option 11	27'
20'	W21x55	30'	21'	1' 6"	#7s @12in O.C. T&B	5'	30	#7	11"	Option 14	29'
22'	W21x62	30'	21'	1' 9"	#7s @12in O.C. T&B	5'	30	#7	11"	Option 14	31'
25'	W24x68	30'	21'	2'	#8s @12in O.C. T&B	5'	30	#7	11"	Option 16	34'
30'	W24x94	30'	22'	2' 6"	#9s @12in O.C. T&B	5'	30	#7	11"	Option 16	39'
35'	W24x104	30'	22'	3' 3"	#10s @12in O.C. T&B	5'	30	#7	11"	Option 17	44'
40'	W24x131	30'	22'	4'	#12s @12in O.C. T&B	5'	30	#7	11"	Option 17	49'

Chart Notes:

1. If the display height is between chart values shown above, use the next highest value.
2. All installations will be braced with laterals placed at 10' increments on front and back of the column starting at 10' above grade. See 241-0414 for lateral sizes.
3. Wind loading figured at **Exposure "C" - Open terrain** with scattered obstructions having heights generally less than 30 feet. This category includes flat open country, grasslands, and all water surfaces in hurricane prone areas.
4. Wind loading figured at **Exposure "B" - Urban and suburban areas**, wooded areas, or other terrain with numerous closely spaced obstructions having the size of single-family dwellings or larger. These areas prevail in the upwind direction for a distance of 2600 feet or 20 times the structure height, whichever is greater.
5. **Please see DWG-0818 to determine base plate and anchor sizes from the option listed above.
6. Quantity of Pier reinforcements listed is **PER PIER**.

Outdoor Scoreboard
Footing Installation
3 Column
Multi-Section



Nevco, Inc.
Greenville, Illinois 62246

Drawing No. 241-0410

Drawn CJS Date 12/14/18

Sheet 7 of 7