

DIMENSIONS AND SPECIFICATIONS						
MODEL	WIDTH	HEIGHT	WEIGHT	WEIGHT W/ ET	DIM "A"	DIM "B"
3620	32'	8' 3/16"	760 lbs	822 lbs	4'	8'
7620						
3657	32'	10' 3/16"	890 lbs	952 lbs	4'	8'
3688	32'	8' 3/16"	N/A	930 lbs	4'	8'
7688						
1603	36'	9' 3/16"	930 lbs	992 lbs	3'	10'
1603PC						
3616	36'	10' 3/16"	1020 lbs	1220 lbs	3'	10'
7616						


- General Notes:
1. Column steel to be grade A992 (50 ksi steel minimum).
  2. Bracing steel to be ASTM A500 Grade B minimum (see note 2 on sheets 4-8).
  3. Minimum bolt grade: A307
  4. All welds to conform to AWS standards
  5. The dimensions in the charts on sheets 4-8 are calculated using the requirements specified in IBC 2012, and the Manual of Steel Construction (13th Edition). Soil lateral bearing pressure is considered to be 150 psf/f.
  6. Check with the local building authority to determine the installation sites wind zone and risk category as specified in IBC 2012 and ASCE 7-10. For the purposes of these installation prints, Risk Category I shall apply to an installation where the scoreboard is more than 1.5 x the overall height away from the nearest spectator section. Risk Category II shall apply to all other installations.
  7. The weights of signs to be calculated using 2.2 lb/sq. ft of sign area.
  8. The weights of Nevco message centers to be calculated using 8.5 lb/sq ft.
  9. The weights of Nevco video displays to be calculated using 9.5 lbs/sq. ft.
  10. The weights of Nevco arches to be calculated using 2.3 lbs/sq. ft.

**Important. Read before installation.**  
This is not an engineered drawing. It is intended for representational purposes only. The dimensions called out on this drawing are intended to be used as a guide only, and are not intended to be suitable for all conditions. Adding signs or other components around the scoreboard beyond the scope of this drawing or increasing the display height from the ground will affect the installation requirements. Nevco recommends that you consult a professional engineer or architect familiar with the area before attempting installation. They can verify that the selected mounting beams or posts along with the brackets, screws, and other hardware items provided by others or Nevco are adequate for your local soil conditions, wind loads and other local codes. If procedures are used that are not covered in this drawing, careful analysis of the installation is urged.

\*See page 3 for spread footing details

FRONT VIEW

Outdoor Scoreboard  
Footing Installation  
4 Column  
Multi-Section



**Nevco, Inc.**  
Greenville, Illinois 62246

Drawn CJS

Date 12/14/18

Drawing No. 241-0412

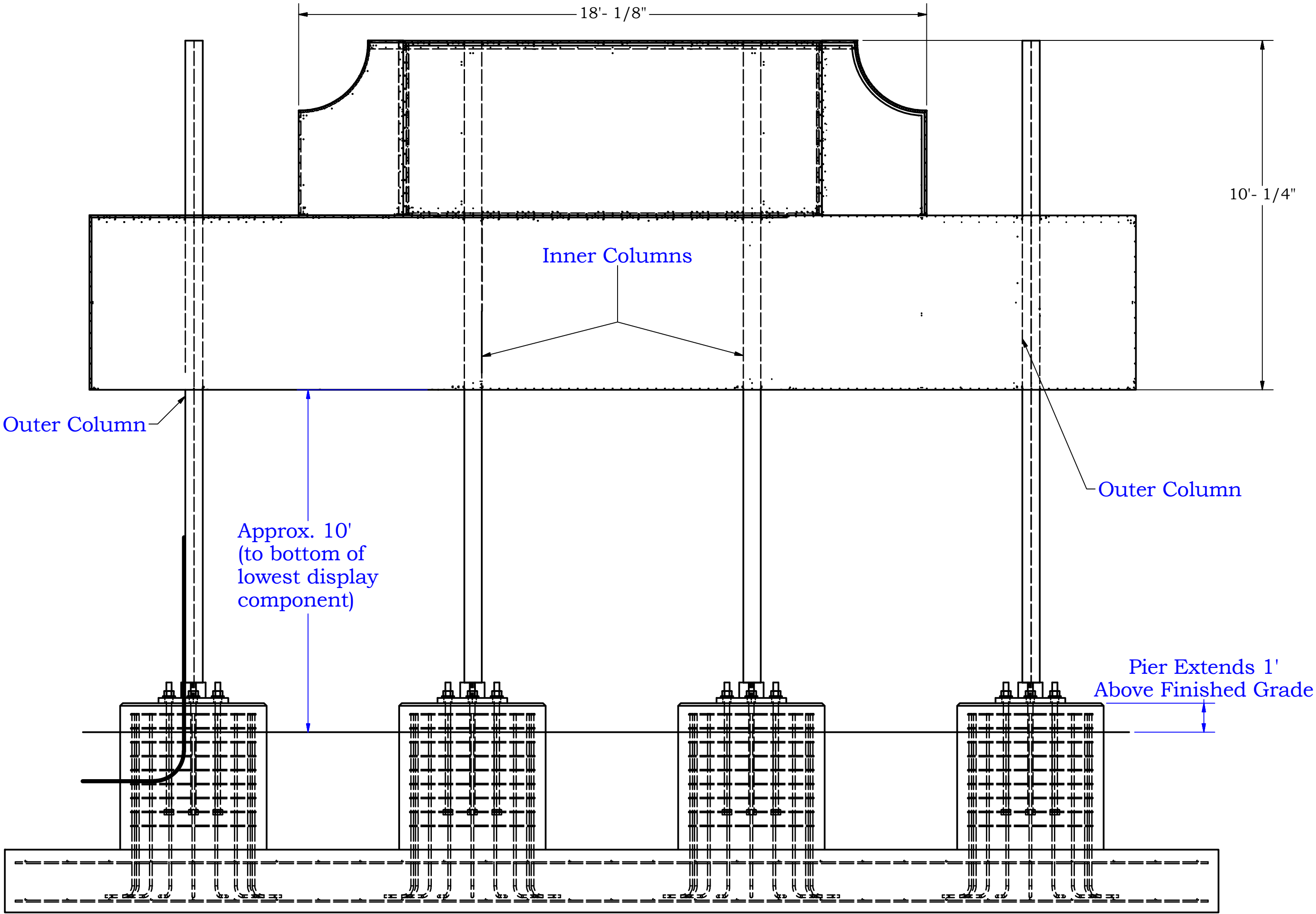
Sheet 1 of 8

3604 Scoreboard

Rev A


\*Outer columns are 5' shorter than inner columns.\*

DIMENSIONS AND SPECIFICATIONS						
MODEL	LENGTH	HEIGHT	WEIGHT	WEIGHT W/ ET	DIM "A"	DIM "B"
3604	30'	10' 3/16"	630 lbs	692 lbs	3'	8'



See sheet 1 for Pier  
or Footing Information

Outdoor Scoreboard  
Footing Installation  
4 Column  
Multi-Section



**NEVCO**

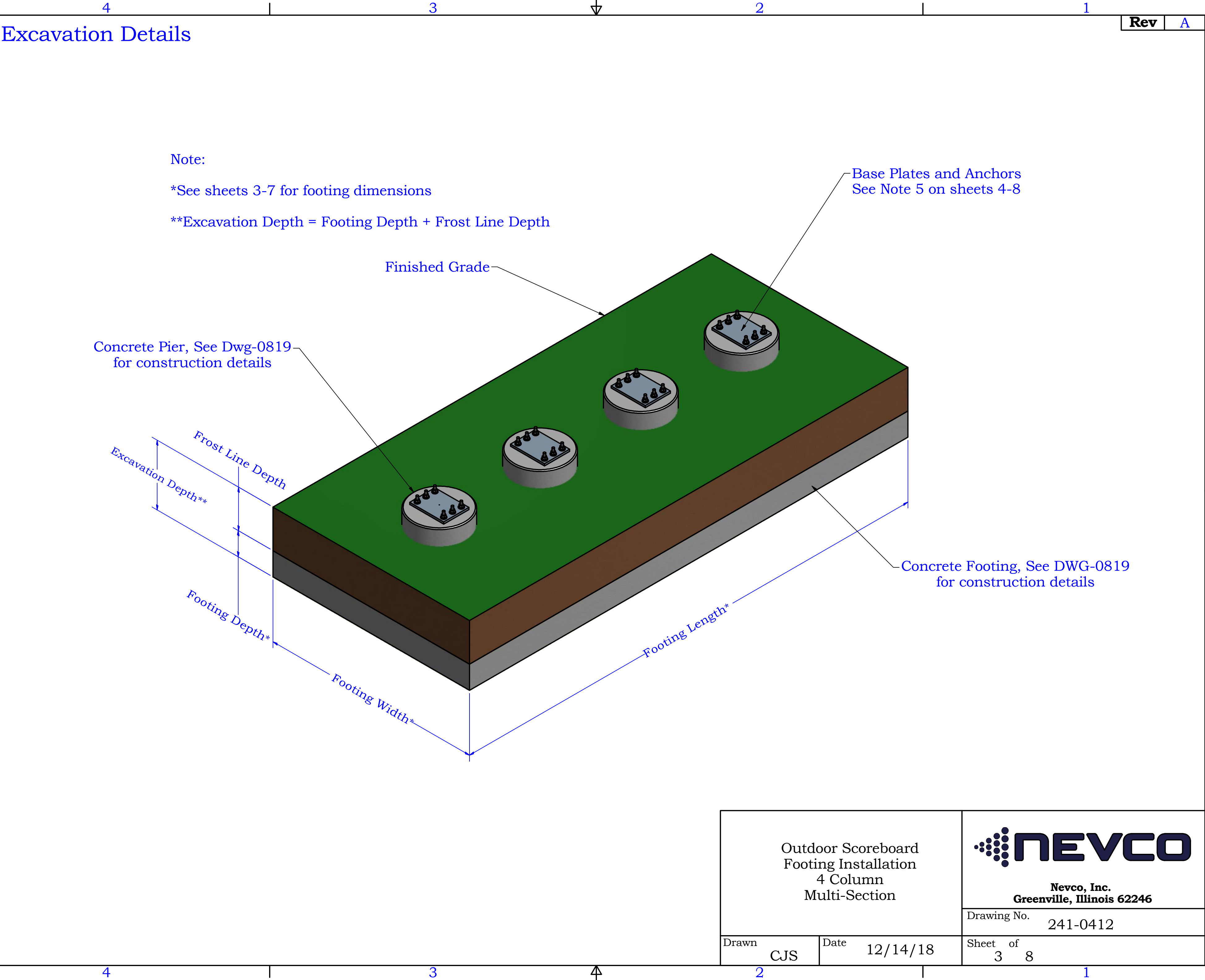
Nevco, Inc.  
Greenville, Illinois 62246

Drawing No. 241-0412

Sheet 2 of 8

Drawn CJS

Date 12/14/18





4				3				2				1				Rev		A									
105 MPH WIND ZONES																											
EXPOSURE C (See Note 3)														EXPOSURE B (See Note 4)													
Column and Foundation Requirements (Based on ASCE 7-10)														Column and Foundation Requirements (Based on ASCE 7-10)													
Display Height	Braced Column	Spread Footing				Pier and Pier Reinforcement				Anchors and Base Plates**	Column Length	Display Height	Braced Column	Spread Footing				Pier and Pier Reinforcement				Anchors and Base Plates**	Column Length				
		Footing Length	Footing Width	Footing Depth	Steel Reinforcement	Pier Diameter	Quantity	Size	Hook Length					Footing Length	Footing Width	Footing Depth	Steel Reinforcement	Pier Diameter	Quantity	Size	Hook Length						
10'	W8x21	32	9	1'6"	#4s @12in O.C. T&B	3	18	#5	8"	Option 1	19	10'	W8x18	32	7'6"	1'6"	#4s @12in O.C. T&B	3	18	#5	8"	Option 1	19				
12'	W14x22	32	10'	1'6"	#4s @12in O.C. T&B	3	18	#5	8"	Option 8	21'	12'	W8x21	32	8'6"	1'6"	#4s @12in O.C. T&B	3	18	#5	8"	Option 1	21'				
14'	W10x26	32	11'	1'6"	#4s @12in O.C. T&B	3	18	#5	8"	Option 3	23'	14'	W10x22	32	9'6"	1'6"	#4s @12in O.C. T&B	3	18	#5	8"	Option 3	23'				
16'	W12x30	32	12	1'6"	#4s @12in O.C. T&B	3	18	#5	8"	Option 5	25'	16'	W14x22	32	10	1'6"	#4s @12in O.C. T&B	3	18	#5	8"	Option 8	25'				
18'	W14x30	32	13	1'6"	#5s @12in O.C. T&B	3	18	#5	8"	Option 8	27'	18'	W10x26	32	11	1'6"	#4s @12in O.C. T&B	3	18	#5	8"	Option 3	27'				
20'	W14x34	32	14	1'6"	#5s @12in O.C. T&B	3	18	#5	8"	Option 8	29'	20'	W12x26	32	12	1'6"	#4s @12in O.C. T&B	3	18	#5	8"	Option 5	29'				
22'	W16x36	32	15	1'6"	#5s @12in O.C. T&B	4	24	#6	9"	Option 10	31'	22'	W12x30	32	13	1'6"	#5s @12in O.C. T&B	3	18	#5	8"	Option 5	31'				
25'	W16x40	32	17	1'6"	#5s @12in O.C. T&B	4	24	#6	9"	Option 10	34'	25'	W14x34	32	14	1'6"	#5s @12in O.C. T&B	3	18	#5	8"	Option 8	34'				
30'	W16x50	32	19	1'6"	#7s @12in O.C. T&B	4	24	#6	9"	Option 10	39'	30'	W16x40	32	17	1'6"	#5s @12in O.C. T&B	4	24	#6	9"	Option 10	39'				
35'	W21x55	32	22	1'6"	#8s @12in O.C. T&B	5	30	#7	11"	Option 14	44'	35'	W16x50	32	19	1'6"	#7s @12in O.C. T&B	4	24	#6	9"	Option 10	44'				
40'	W21x68	32	22	1'9"	#8s @12in O.C. T&B	5	30	#7	11"	Option 14	49'	40'	W18x55	32	21	1'6"	#7s @12in O.C. T&B	4	24	#6	9"	Option 11	49'				
Column and Foundation Requirements (Based on ASCE 7-10)														Column and Foundation Requirements (Based on ASCE 7-10)													
Display Height	Braced Column	Spread Footing				Pier and Pier Reinforcement				Anchors and Base Plates**	Column Length	Display Height	Braced Column	Spread Footing				Pier and Pier Reinforcement				Anchors and Base Plates**	Column Length				
		Footing Length	Footing Width	Footing Depth	Steel Reinforcement	Pier Diameter	Quantity	Size	Hook Length					Footing Length	Footing Width	Footing Depth	Steel Reinforcement	Pier Diameter	Quantity	Size	Hook Length						
8'	W8x21	34	8	1'6"	#4s @12in O.C. T&B	3	18	#5	8"	Option 1	17	8'	W10x17	34	6'6"	1'6"	#4s @12in O.C. T&B	3	18	#5	8"	Option 3	17				
10'	W10x22	34	9	1'6"	#4s @12in O.C. T&B	3	18	#5	8"	Option 3	19	10'	W8x18	34	7'6"	1'6"	#4s @12in O.C. T&B	3	18	#5	8"	Option 1	19				
12'	W10x26	34	10'	1'6"	#4s @12in O.C. T&B	3	18	#5	8"	Option 3	21'	12'	W8x21	34	8'6"	1'6"	#4s @12in O.C. T&B	3	18	#5	8"	Option 1	21'				
14'	W12x26	34	11'	1'6"	#4s @12in O.C. T&B	3	18	#5	8"	Option 5	23'	14'	W10x22	34	9'6"	1'6"	#4s @12in O.C. T&B	3	18	#5	8"	Option 3	23'				
16'	W12x30	34	12	1'6"	#4s @12in O.C. T&B	3	18	#5	8"	Option 5	25'	16'	W10x26	34	10	1'6"	#4s @12in O.C. T&B	3	18	#5	8"	Option 3	25'				
18'	W14x30	34	13	1'6"	#5s @12in O.C. T&B	3	18	#5	8"	Option 8	27'	18'	W12x26	34	11	1'6"	#4s @12in O.C. T&B	3	18	#5	8"	Option 5	27'				
20'	W14x34	34	14	1'6"	#5s @12in O.C. T&B	3	18	#5	8"	Option 8	29'	20'	W12x30	34	12	1'6"	#4s @12in O.C. T&B	3	18	#5	8"	Option 5	29'				
22'	W16x36	34	15	1'6"	#5s @12in O.C. T&B	4	24	#6	9"	Option 10	31'	22'	W14x30	34	13	1'6"	#5s @12in O.C. T&B	3	18	#5	8"	Option 8	31'				
25'	W21x44	34	17	1'6"	#5s @12in O.C. T&B	5	30	#7	11"	Option 14	34'	25'	W18x36	34	14	1'6"	#5s @12in O.C. T&B	4	24	#6	9"	Option 11	34'				
30'	W18x55	34	19	1'6"	#7s @12in O.C. T&B	4	24	#6	9"	Option 11	39'	30'	W14x43	34	17	1'6"	#5s @12in O.C. T&B	4	24	#6	9"	Option 9	39'				
35'	W21x62	34	22	1'6"	#8s @12in O.C. T&B	5	30	#7	11"	Option 14	44'	35'	W18x50	34	19	1'6"	#7s @12in O.C. T&B	4	24	#6	9"	Option 11	44'				
40'	W24x68	34	22	1'9"	#8s @12in O.C. T&B	5	30	#7	11"	Option 16	49'	40'	W21x55	34	21	1'6"	#7s @12in O.C. T&B	5	30	#7	11"	Option 14	49'				
Column and Foundation Requirements (Based on ASCE 7-10)														Column and Foundation Requirements (Based on ASCE 7-10)													
Display Height	Braced Column	Spread Footing				Pier and Pier Reinforcement				Anchors and Base Plates**	Column Length	Display Height	Braced Column	Spread Footing				Pier and Pier Reinforcement				Anchors and Base Plates**	Column Length				
		Footing Length	Footing Width	Footing Depth	Steel Reinforcement	Pier Diameter	Quantity	Size	Hook Length					Footing Length	Footing Width	Footing Depth	Steel Reinforcement	Pier Diameter	Quantity	Size	Hook Length						
8'	W8x21	38	8	1'6"	#4s @12in O.C. T&B	3	18	#5	8"	Option 1	17	8'	W10x17	38	6'6"	1'6"	#4s @12in O.C. T&B	3	18	#5	8"	Option 3	17				
10'	W10x22	38	9	1'6"	#4s @12in O.C. T&B	3	18	#5	8"	Option 3	19	10'	W8x18	38	7'6"	1'6"	#4s @12in O.C. T&B	3	18	#5	8"	Option 1	19				
12'	W10x26	38	10'	1'6"	#4s @12in O.C. T&B	3	18	#5	8"	Option 3	21'	12'	W8x21	38	8'6"	1'6"	#4s @12in O.C. T&B	3	18	#5	8"	Option 1	21'				
14'	W12x26	38	11'	1'6"	#4s @12in O.C. T&B	3	18	#5	8"	Option 5	23'	14'	W10x22	38	9'6"	1'6"	#4s @12in O.C. T&B	3	18	#5	8"	Option 3	23'				
16'	W12x30	38	12	1'6"	#4s @12in O.C. T&B	3	18	#5	8"	Option 5	25'	16'	W10x26	38	10	1'6"	#4s @12in O.C. T&B	3	18	#5	8"	Option 3	25'				
18'	W14x34	38	13	1'6"	#5s @12in O.C. T&B	3	18	#5	8"	Option 8	27'	18'	W12x26	38	11	1'6"	#4s @12in O.C. T&B	3	18	#5	8"	Option 5	27'				
20'	W16x36	38	15	1'6"	#5s @12in O.C. T&B	4	24	#6	9"	Option 10	29'	20'	W12x30	38	12	1'6"	#4s @12in O.C. T&B	3	18	#5	8"	Option 5	29'				
22'	W16x40	38	15	1'6"	#5s @12in O.C. T&B	4	24	#6	9"	Option 10	31'	22'	W14x34	38	13	1'6"	#5s @12in O.C. T&B	3	18	#5	8"	Option 8	31'				
25'	W21x44	38	17	1'6"	#5s @12in O.C. T&B	5	30	#7	11"	Option 14	34'	25'	W18x36	38	15	1'6"	#5s @12in O.C. T&B	4	24	#6	9"	Option 11	34'				
30'	W18x55	38	19	1'6"	#7s @12in O.C. T&B	4	24	#6	9"	Option 11	39'	30'	W14x43	38	17	1'6"	#5s @12in O.C. T&B	4	24	#6	9"	Option 9	39'				
35'	W21x62	38	22	1'6"	#7s @12in O.C. T&B	5	30	#7	11"	Option 14	44'	35'	W18x50	38	19	1'6"	#7s @12in O.C. T&B	4	24	#6	9"	Option 11	44'				
40'	W24x68	38	22	2	#8s @12in O.C. T&B	5	30	#7	11"	Option 16	49'	40'	W21x62	38	21	1'6"	#7s @12in O.C. T&B	5	30	#7	11"	Option 14	49'				
Chart Notes:														Outdoor Scoreboard Footing Installation 4 Column Multi-Section													
1. If the display height is between chart values shown above, use the next highest value.														Nevco, Inc. Greenville, Illinois 62246													
2. All installations will be braced with laterals placed at 10' increments on front and back of the column starting at 10' above grade. See 241-0416 for lateral sizes.																											
3. Wind loading figured at <b>Exposure "C" - Open terrain</b> with scattered obstructions having heights generally less than 30 feet. This category includes flat open country, grasslands, and all water surfaces in hurricane prone areas.														Drawing No. 241-0412													
4. Wind loading figured at <b>Exposure "B" - Urban and suburban areas</b> , wooded areas, or other terrain with numerous closely spaced obstructions having the size of single-family dwellings or larger. These areas prevail in the upwind direction for a distance of 2600 feet or 20 times the structure height, whichever is greater.																											
5. **Please see DWG-0818 to determine base plate and anchor sizes from the option listed above.														Sheet of 4 8													
6. Quantity of Pier reinforcements listed is <b>PER PIER</b> .																											
4				3				2				1															

30 FEET LONG INSTALLATIONS

32 FEET LONG INSTALLATIONS

36 FEET LONG INSTALLATIONS



<b>Rev</b>	<b>A</b>
------------	----------

**EXPOSURE B (See Note 4)**

### Column and Foundation Requirements (Based on ASCE 7-10)

Display Height	Braced Column	Spread Footing				Pier and Pier Reinforcement				Anchors and Base Plates**	Column Length
		Footing Length	Footing Width	Footing Depth	Steel Reinforcement	Pier Diameter	Quantity	Size	Hook length		
10	W8x21	32	9	1'6"	#4s @12in O.C T&B	3	18	#6	8"	Option 1	19
12	W10x22	32	10	1'6"	#4s @12in O.C T&B	3	18	#6	8"	Option 3	21
14	W10x26	32	11	1'6"	#4s @12in O.C T&B	3	18	#6	8"	Option 3	23
16	W12x26	32	12	1'6"	#4s @12in O.C T&B	3	18	#6	8"	Option 5	25
18	W12x30	32	13	1'6"	#6s @12in O.C T&B	3	18	#6	8"	Option 5	27
20	W14x30	32	14	1'6"	#6s @12in O.C T&B	3	18	#6	8"	Option 8	29
22	W14x34	32	15	1'6"	#6s @12in O.C T&B	3	18	#6	8"	Option 8	31
25	W16x40	32	16	1'6"	#6s @12in O.C T&B	4	24	#6	9"	Option 10	34
30	W14x48	32	19	1'6"	#7s @12in O.C T&B	4	24	#6	9"	Option 9	39
36	W21x55	32	21	1'6"	#7s @12in O.C T&B	5	30	#7	11"	Option 14	44
40	W21x62	32	22	1'9"	#8s @12in O.C T&B	5	30	#7	11"	Option 14	49

## 30 FEET LONG INSTALLATIONS

### Column and Foundation Requirements (Based on ASCE 7-10)

Display Height	Braced Column	Spread Footing				Pier and Pier Reinforcement				Anchors and Base Plates**	Column Length
		Footing Length	Footing Width	Footing Depth	Steel Reinforcement	Pier Diameter	Quantity	Size	Hook length		
8	W8x18	34	7'6"	1'6"	#4s @12in O.C T&B	3	18	#6	8"	Option 1	17
10	W8x21	34	9	1'6"	#4s @12in O.C T&B	3	18	#6	8"	Option 1	19
12	W14x22	34	10	1'6"	#4s @12in O.C T&B	3	18	#6	8"	Option 8	21
14	W12x26	34	11	1'6"	#4s @12in O.C T&B	3	18	#6	8"	Option 5	23
16	W12x26	34	12	1'6"	#4s @12in O.C T&B	3	18	#6	8"	Option 5	25
18	W14x30	34	13	1'6"	#6s @12in O.C T&B	3	18	#6	8"	Option 8	27
20	W14x34	34	14	1'6"	#6s @12in O.C T&B	3	18	#6	8"	Option 8	29
22	W16x36	34	15	1'6"	#6s @12in O.C T&B	4	24	#6	9"	Option 10	31
25	W16x40	34	17	1'6"	#6s @12in O.C T&B	4	24	#6	9"	Option 10	34
30	W18x50	34	19	1'6"	#7s @12in O.C T&B	4	24	#6	9"	Option 11	39
36	W21x62	34	21	1'6"	#7s @12in O.C T&B	5	30	#7	11"	Option 14	44
40	W21x68	34	22	1'9"	#8s @12in O.C T&B	5	30	#7	11"	Option 14	49

## 32 FEET LONG INSTALLATIONS

### Column and Foundation Requirements (Based on ASCE 7-10)

Display Height	Braced Column	Spread Footing				Pier and Pier Reinforcement				Anchors and Base Plates**	Column Length
		Footing Length	Footing Width	Footing Depth	Steel Reinforcement	Pier Diameter	Quantity	Size	Hook length		
8	W8x18	38	7' 6"	1' 6"	#4s @12in O.C. T&B	3	18	#6	8"	Option 1	17
10	W10x22	38	9	1' 6"	#4s @12in O.C. T&B	3	18	#6	8"	Option 3	19
12	W14x22	38	10	1' 6"	#4s @12in O.C. T&B	3	18	#6	8"	Option 8	21
14	W12x26	38	11	1' 6"	#4s @12in O.C. T&B	3	18	#6	8"	Option 5	23
16	W12x30	38	12	1' 6"	#4s @12in O.C. T&B	3	18	#6	8"	Option 5	25
18	W14x30	38	13	1' 6"	#4s @12in O.C. T&B	3	18	#6	8"	Option 8	27
20	W14x34	38	14	1' 6"	#6s @12in O.C. T&B	3	18	#6	8"	Option 8	29
22	W16x36	38	15	1' 6"	#6s @12in O.C. T&B	4	24	#6	9"	Option 10	31
25	W14x43	38	17	1' 6"	#6s @12in O.C. T&B	4	24	#6	9"	Option 9	34
30	W18x50	38	19	1' 6"	#6s @12in O.C. T&B	4	24	#6	9"	Option 11	39
36	W21x55	38	22	1' 6"	#7s @12in O.C. T&B	5	30	#7	11"	Option 14	44
40	W24x68	38	22	1' 9"	#8s @12in O.C. T&B	5	30	#7	11"	Option 16	49

## 36 FEET LONG INSTALLATIONS

# Outdoor Scoreboard Footing Installation 4 Column Multi-Section

1. If the display height is between chart values shown above, use the next highest value.
2. All installations will be braced with laterals placed at 10' increments on front and back of the column starting at 10' above grade. See 241-0416 for lateral sizes.
3. Wind loading figured at **Exposure "C" - Open terrain** with scattered obstructions having heights generally less than 30 feet. This category includes flat open country, grasslands, and all water surfaces in hurricane prone areas.
4. Wind loading figured at **Exposure "B" - Urban and suburban areas**, wooded areas, or other terrain with numerous closely spaced obstructions having the size of single-family dwellings or larger. These areas prevail in the upwind direction for a distance of 2600 feet or 20 times the structure height, whichever is greater.
5. \*\*Please see DWG-0818 to determine base plate and anchor sizes from the option listed above.
6. Quantity of Pier reinforcements listed is **PER PIER**.



**Nevco, Inc.**  
**Greenville, Illinois 62246**

Drawing No.	241-0412
-------------	----------

Drawn	CJS	Date	12/14/18
-------	-----	------	----------

Sheet	of	5	8
-------	----	---	---



**EXPOSURE C (See Note 3)**

### Column and Foundation Requirements (Based on ASCE 7-10)

Display Height	Braced Column	Spread Footing				Pier and Pier Reinforcement				Anchors and Base Plates**	Column Length
		Footing Length	Footing Width	Footing Depth	Steel Reinforcement	Pier Diameter	Quantity	Size	Hook Length		
10'	W10x26	22	11'	1'6"	#4s @12in O.C. T&B	3'	18	#5	8"	Option 3	19'
12'	W12x30	22	13'	1'6"	#4s @12in O.C. T&B	3'	18	#5	8"	Option 5	21'
14'	W14x30	22	14'	1'6"	#5s @12in O.C. T&B	3'	18	#5	8"	Option 8	23'
16'	W18x35	22	16'	1'6"	#5s @12in O.C. T&B	4'	24	#6	9"	Option 11	25'
18'	W16x40	22	16'	1'6"	#5s @12in O.C. T&B	4'	24	#6	9"	Option 10	27'
20'	W21x44	22	18'	1'6"	#5s @12in O.C. T&B	5'	30	#7	11"	Option 14	29'
22'	W16x50	22	19'	1'6"	#5s @12in O.C. T&B	4'	24	#6	9"	Option 10	31'
25'	W18x55	22	21'	1'6"	#7s @12in O.C. T&B	4'	24	#6	9"	Option 11	34'
30'	W21x62	22	22'	1'9"	#8s @12in O.C. T&B	5'	30	#7	11"	Option 14	39'
35'	W24x76	22	22'	2'3"	#9s @12in O.C. T&B	5'	30	#7	11"	Option 16	44'
40'	W24x94	22	22'	2'9"	#10s @12in O.C. T&B	5'	30	#7	11"	Option 16	49'

## 30 FEET LONG INSTALLATIONS

### Column and Foundation Requirements (Based on ASCE 7-10)

Display Height	Braced Column	Spread Footing				Pier and Pier Reinforcement				Anchors and Base Plates**	Column Length
		Footing Length	Footing Width	Footing Depth	Steel Reinforcement	Pier Diameter	Quantity	Size	Hook Length		
8'	W10x26	26"	10'	1' 6"	#4s @12in O.C. T&B	3'	18	#5	8"	Option 3	17'
10'	W12x26	26"	11'	1' 6"	#4s @12in O.C. T&B	3'	18	#5	8"	Option 5	19'
12'	W12x30	26"	13'	1' 6"	#4s @12in O.C. T&B	3'	18	#5	8"	Option 5	21'
14'	W14x34	26"	14'	1' 6"	#5s @12in O.C. T&B	3'	18	#5	8"	Option 8	23'
16'	W16x36	26"	15'	1' 6"	#5s @12in O.C. T&B	4'	24	#6	9"	Option 10	25'
18'	W14x43	26"	16'	1' 6"	#5s @12in O.C. T&B	4'	24	#6	9"	Option 9	27'
20'	W16x50	26"	18'	1' 6"	#5s @12in O.C. T&B	4'	24	#6	9"	Option 10	29'
22'	W18x50	26"	19'	1' 6"	#5s @12in O.C. T&B	4'	24	#6	9"	Option 11	31'
25'	W21x55	26"	21'	1' 6"	#7s @12in O.C. T&B	5'	30	#7	11"	Option 14	34'
30'	W21x68	26"	22'	1' 9"	#8s @12in O.C. T&B	5'	30	#7	11"	Option 14	39'
35'	W24x84	26"	22'	2' 3"	#9s @12in O.C. T&B	5'	30	#7	11"	Option 16	44'
40'	W24x94	26"	22'	2' 9"	#10s @12in O.C. T&B	5'	30	#7	11"	Option 16	49'

## 32 FEET LONG INSTALLATIONS

**Column and Foundation Requirements (Based on ASCE 7-10)**

Display Height	Braced Column	Spread Footing				Pier and Pier Reinforcement				Anchors and Base Plates**	Column Length
		Footing Length	Footing Width	Footing Depth	Steel Reinforcement	Pier Diameter	Quantity	Size	Hook Length		
8'	W10x26	30"	10'	1' 6"	#4s @12in O.C. T&B	3'	18	#5	8"	Option 3	17'
10'	W12x26	30"	11'	1' 6"	#4s @12in O.C. T&B	3'	18	#5	8"	Option 5	19'
12'	W12x30	30"	13'	1' 6"	#4s @12in O.C. T&B	3'	18	#5	8"	Option 5	21'
14'	W14x34	30"	14'	1' 6"	#5s @12in O.C. T&B	3'	18	#5	8"	Option 8	23'
16'	W16x36	30"	15'	1' 6"	#5s @12in O.C. T&B	4'	24	#6	9"	Option 10	25'
18'	W14x43	30"	16'	1' 6"	#5s @12in O.C. T&B	4'	24	#6	9"	Option 9	27'
20'	W16x50	30"	18'	1' 6"	#5s @12in O.C. T&B	4'	24	#6	9"	Option 10	29'
22'	W18x50	30"	19'	1' 6"	#5s @12in O.C. T&B	4'	24	#6	9"	Option 11	31'
25'	W21x55	30"	21'	1' 6"	#7s @12in O.C. T&B	5'	30	#7	11"	Option 14	34'
30'	W21x68	30"	22'	1' 9"	#8s @12in O.C. T&B	5'	30	#7	11"	Option 14	39'
36'	W24x76	30"	22'	2' 3"	#9s @12in O.C. T&B	5'	30	#7	11"	Option 16	44'
40'	W21x101	30"	22'	2' 9"	#10s @12in O.C. T&B	5'	30	#7	11"	Option 15	49'

## 36 FEET LONG INSTALLATIONS

**EXPOSURE B (See Note 4)**

### Column and Foundation Requirements (Based on ASCE 7-10)

Display Height	Blaced Column	Spread Footing				Pier and Pier Reinforcement				Anchors and Base Plates**	Column Length
		Footing Length	Footing Width	Footing Depth	Steel Reinforcement	Pier Diameter	Quantity	Size	Hook length		
10	W10x22	22	9'6"	1'6"	#4s@12in O.C T&B	3	18	#6	8"	Option 3	19
12	W10x26	22	11'	1'6"	#4s@12in O.C T&B	3	18	#6	8"	Option 3	21
14	W12x26	22	12'	1'6"	#4s@12in O.C T&B	3	18	#6	8"	Option 5	23
16	W12x30	22	13'	1'6"	#6s@12in O.C T&B	3	18	#6	8"	Option 5	25
18	W14x30	22	14'	1'6"	#6s@12in O.C T&B	3	18	#6	8"	Option 8	27
20	W14x34	22	15'	1'6"	#6s@12in O.C T&B	3	18	#6	8"	Option 8	29
22	W16x36	22	16'	1'6"	#6s@12in O.C T&B	4	24	#6	9"	Option 10	31
25	W14x43	22	18'	1'6"	#6s@12in O.C T&B	4	24	#6	9"	Option 9	34
30	W18x50	22	20'	1'6"	#7s@12in O.C T&B	4	24	#6	9"	Option 11	39
36	W21x62	22	22'	1'9"	#8s@12in O.C T&B	5	30	#7	11"	Option 14	44
40	W24x68	22	22'	2'3"	#9s@12in O.C T&B	5	30	#7	11"	Option 16	49

### Column and Foundation Requirements (Based on ASCE 7-10)

Display Height	Blaced Column	Spread Footing				Pier and Pier Reinforcement				Anchors and Base Plates**	Column Length
		Footing Length	Footing Width	Footing Depth	Steel Reinforcement	Pier Diameter	Quantity	Size	Hook length		
8	W8x21	26	8	1'6"	#4s @ 12" O.C. 18B	3	18	#6	8"	Option 1	17
10	W10x22	26	9'6"	1'6"	#4s @ 12" O.C. 18B	3	18	#6	8"	Option 3	19
12	W10x26	26	11'	1'6"	#4s @ 12" O.C. 18B	3	18	#6	8"	Option 3	21
14	W12x26	26	12	1'6"	#4s @ 12" O.C. 18B	3	18	#6	8"	Option 5	23
16	W12x30	26	13	1'6"	#4s @ 12" O.C. 18B	3	18	#6	8"	Option 5	25
18	W14x34	26	14	1'6"	#6s @ 12" O.C. 18B	3	18	#6	8"	Option 8	27
20	W16x36	26	15	1'6"	#6s @ 12" O.C. 18B	4	24	#6	9"	Option 10	29
22	W16x40	26	16	1'6"	#6s @ 12" O.C. 18B	4	24	#6	9"	Option 10	31
25	W14x48	26	18	1'6"	#6s @ 12" O.C. 18B	4	24	#6	9"	Option 9	34
30	W18x55	26	20	1'6"	#7s @ 12" O.C. 18B	4	24	#6	9"	Option 11	39
36	W21x68	26	22	1'9"	#8s @ 12" O.C. 18B	5	30	#7	11"	Option 14	44
40	W24x76	26	22	2	#9s @ 12" O.C. 18B	5	30	#7	11"	Option 16	49

### Column and Foundation Requirements (Based on ASCE 7-10)

Display Height	Blaced Column	Spread Footing				Pier and Pier Reinforcement				Anchors and Base Plates**	Column Length
		Footing Length	Footing Width	Footing Depth	Steel Reinforcement	Pier Diameter	Quantity	Size	Hook length		
8	W8x21	30	8	1'6"	#4s @12in O.C. T&B	3	18	#5	8"	Option 1	17
10	W10x22	30	9'6"	1'6"	#4s @12in O.C. T&B	3	18	#5	8"	Option 3	19
12	W10x26	30	11	1'6"	#4s @12in O.C. T&B	3	18	#5	8"	Option 3	21
14	W12x26	30	12	1'6"	#4s @12in O.C. T&B	3	18	#5	8"	Option 5	23
16	W14x30	30	14	1'6"	#5s @12in O.C. T&B	3	18	#5	8"	Option 8	25
18	W14x34	30	14	1'6"	#5s @12in O.C. T&B	3	18	#5	8"	Option 8	27
20	W16x36	30	15	1'6"	#5s @12in O.C. T&B	4	24	#5	9"	Option 10	29
22	W16x40	30	16	1'6"	#5s @12in O.C. T&B	4	24	#5	9"	Option 10	31
25	W16x50	30	18	1'6"	#5s @12in O.C. T&B	4	24	#5	9"	Option 10	34
30	W21x55	30	21	1'6"	#7s @12in O.C. T&B	5	30	#7	11"	Option 14	39
36	W21x62	30	22	1'9"	#8s @12in O.C. T&B	5	30	#7	11"	Option 14	44
40	W24x76	30	22	2'3"	#9s @12in O.C. T&B	5	30	#7	11"	Option 16	49

### Chart Notes:

1. If the display height is between chart values shown above, use the next highest value.
2. All installations will be braced with laterals placed at 10' increments on front and back of the column starting at 10' above grade. See 241-0416 for lateral sizes.
3. Wind loading figured at **Exposure "C" - Open terrain** with scattered obstructions having heights generally less than 30 feet. This category includes flat open country, grasslands, and all water surfaces in hurricane prone areas.
4. Wind loading figured at **Exposure "B" - Urban and suburban areas**, wooded areas, or other terrain with numerous closely spaced obstructions having the size of single-family dwellings or larger. These areas prevail in the upwind direction for a distance of 2600 feet or 20 times the structure height, whichever is greater.
5. \*\*Please see DWG-0818 to determine base plate and anchor sizes from the option listed above.
6. Quantity of Pier reinforcements listed is **PER PIER**.

# Outdoor Scoreboard Footing Installation 4 Column Multi-Section



**Nevco, Inc.**  
**Greenville, Illinois 62246**

Drawing No.	241-0412
-------------	----------

Drawn	CJS	Date	12/14/18
-------	-----	------	----------

Sheet 6 of 8



## 150 MPH WIND ZONES

## EXPOSURE C (See Note 3)

## Column and Foundation Requirements (Based on ASCE 7-10)

Display Height	Braced Column	Spread Footing				Pier and Pier Reinforcement				Anchors and Base Plates**	Column Length
		Footing Length	Footing Width	Footing Depth	Steel Reinforcement	Pier Diameter	Quantity	Size	Hook Length		
10'	W12x30	32	13'	1' 6"	#4s @12in O.C. T&B	3'	18	#5	8"	Option 5	19
12'	W14x34	32	15'	1' 6"	#5s @12in O.C. T&B	3'	18	#5	8"	Option 8	21'
14'	W16x36	32	16'	1' 6"	#5s @12in O.C. T&B	4'	24	#6	9"	Option 10	23'
16'	W14x43	32	17'	1' 6"	#6s @12in O.C. T&B	4'	24	#6	9"	Option 9	25'
18'	W16x50	32	19'	1' 6"	#6s @12in O.C. T&B	4'	24	#6	9"	Option 10	27'
20'	W18x50	32	20'	1' 6"	#7s @12in O.C. T&B	4'	24	#6	9"	Option 11	29'
22'	W21x55	32	22'	1' 6"	#7s @12in O.C. T&B	5'	30	#7	11"	Option 14	31'
25'	W21x62	32	22'	1' 9"	#8s @12in O.C. T&B	5'	30	#7	11"	Option 14	34'
30'	W24x68	32	22'	2' 6"	#9s @12in O.C. T&B	5'	30	#7	11"	Option 16	39'
35'	W24x94	32	22'	3'	#10s @12in O.C. T&B	5'	30	#7	11"	Option 16	44'
40'	W24x104	32	22'	3' 9"	#11s @12in O.C. T&B	5'	30	#7	11"	Option 17	49'

## Column and Foundation Requirements (Based on ASCE 7-10)

Display Height	Braced Column	Spread Footing				Pier and Pier Reinforcement				Anchors and Base Plates**	Column Length
		Footing Length	Footing Width	Footing Depth	Steel Reinforcement	Pier Diameter	Quantity	Size	Hook Length		
8'	W12x26	34'	11'	1' 6"	#4s @12in O.C. T&B	3'	18	#5	8"	Option 5	17'
10'	W14x30	34'	13'	1' 6"	#4s @12in O.C. T&B	3'	18	#5	8"	Option 8	19'
12'	W18x35	34'	15'	1' 6"	#5s @12in O.C. T&B	4'	24	#6	9"	Option 11	21'
14'	W16x40	34'	16'	1' 6"	#5s @12in O.C. T&B	4'	24	#6	9"	Option 10	23'
16'	W21x44	34'	17'	1' 6"	#6s @12in O.C. T&B	5'	30	#7	11"	Option 14	25'
18'	W18x50	34'	19'	1' 6"	#6s @12in O.C. T&B	4'	24	#6	9"	Option 11	27'
20'	W18x55	34'	20'	1' 6"	#7s @12in O.C. T&B	4'	24	#6	9"	Option 11	29'
22'	W21x62	34'	22'	1' 6"	#7s @12in O.C. T&B	5'	30	#7	11"	Option 14	31'
25'	W21x68	34'	22'	1' 9"	#8s @12in O.C. T&B	5'	30	#7	11"	Option 14	34'
30'	W24x76	34'	22'	2' 6"	#9s @12in O.C. T&B	5'	30	#7	11"	Option 16	39'
35'	W21x101	34'	22'	3'	#10s @12in O.C. T&B	5'	30	#7	11"	Option 15	44'
40'	W24x117	34'	22'	3' 9"	#11s @12in O.C. T&B	5'	30	#7	11"	Option 17	49'

## Column and Foundation Requirements (Based on ASCE 7-10)

Display Height	Braced Column	Spread Footing				Pier and Pier Reinforcement				Anchors and Base Plates**	Column Length
		Footing Length	Footing Width	Footing Depth	Steel Reinforcement	Pier Diameter	Quantity	Size	Hook Length		
8'	W12x26	38'	11'	1' 6"	#4s @12in O.C. T&B	3'	18	#5	8"	Option 5	17'
10'	W14x30	38'	13'	1' 6"	#4s @12in O.C. T&B	3'	18	#5	8"	Option 8	19'
12'	W18x35	38'	15'	1' 6"	#5s @12in O.C. T&B	4'	24	#6	9"	Option 11	21'
14'	W16x40	38'	16'	1' 6"	#5s @12in O.C. T&B	4'	24	#6	9"	Option 10	23'
16'	W21x44	38'	18'	1' 6"	#6s @12in O.C. T&B	5'	30	#7	11"	Option 14	25'
18'	W18x50	38'	19'	1' 6"	#6s @12in O.C. T&B	4'	24	#6	9"	Option 11	27'
20'	W21x55	38'	21'	1' 6"	#7s @12in O.C. T&B	5'	30	#7	11"	Option 14	29'
22'	W21x62	38'	22'	1' 6"	#7s @12in O.C. T&B	5'	30	#7	11"	Option 14	31'
25'	W21x68	38'	22'	1' 9"	#8s @12in O.C. T&B	5'	30	#7	11"	Option 14	34'
30'	W24x84	38'	22'	2' 6"	#9s @12in O.C. T&B	5'	30	#7	11"	Option 16	39'
35'	W21x101	38'	22'	3'	#10s @12in O.C. T&B	5'	30	#7	11"	Option 15	44'
40'	W24x117	38'	22'	3' 9"	#11s @12in O.C. T&B	5'	30	#7	11"	Option 17	49'

## EXPOSURE B (See Note 4)

## Column and Foundation Requirements (Based on ASCE 7-10)

Display Height	Braced Column	Spread Footing				Pier and Pier Reinforcement				Anchors and Base Plates**	Column Length
		Footing Length	Footing Width	Footing Depth	Steel Reinforcement	Pier Diameter	Quantity	Size	Hook length		
10'	W10x26	32'	11'	1' 6"	#4s @12in O.C. T&B	3'	18	#5	8"	Option 3	19'
12'	W12x26	32'	12'	1' 6"	#4s @12in O.C. T&B	3'	18	#5	8"	Option 5	21'
14'	W12x30	32'	13'	1' 6"	#5s @12in O.C. T&B	3'	18	#5	8"	Option 5	23'
16'	W14x34	32'	15'	1' 6"	#5s @12in O.C. T&B	3'	18	#5	8"	Option 8	25'
18'	W16x36	32'	16'	1' 6"	#5s @12in O.C. T&B	4'	24	#6	9"	Option 10	27'
20'	W16x40	32'	17'	1' 6"	#6s @12in O.C. T&B	4'	24	#6	9"	Option 10	29'
22'	W21x44	32'	18'	1' 6"	#6s @12in O.C. T&B	5'	30	#7	11"	Option 14	31'
25'	W18x50	32'	20'	1' 6"	#7s @12in O.C. T&B	4'	24	#6	9"	Option 11	34'
30'	W21x62	32'	22'	1' 9"	#8s @12in O.C. T&B	5'	30	#7	11"	Option 14	39'
35'	W24x68	32'	22'	2' 3"	#9s @12in O.C. T&B	5'	30	#7	11"	Option 16	44'
40'	W24x84	32'	22'	2' 9"	#10s @12in O.C. T&B	5'	30	#7	11"	Option 16	49'

## Column and Foundation Requirements (Based on ASCE 7-10)

Display Height	Braced Column	Spread Footing				Pier and Pier Reinforcement				Anchors and Base Plates**	Column Length
		Footing Length	Footing Width	Footing Depth	Steel Reinforcement	Pier Diameter	Quantity	Size	Hook length		
8'	W10x22	34'	9' 6"	1' 6"	#4s @12in O.C. T&B	3'	18	#5	8"	Option 3	17'
10'	W12x26	34'	11'	1' 6"	#4s @12in O.C. T&B	3'	18	#5	8"	Option 5	19'
12'	W12x30	34'	12'	1' 6"	#4s @12in O.C. T&B	3'	18	#5	8"	Option 5	21'
14'	W14x34	34'	13'	1' 6"	#5s @12in O.C. T&B	3'	18	#5	8"	Option 8	23'
16'	W18x35	34'	15'	1' 6"	#5s @12in O.C. T&B	4'	24	#6	9"	Option 11	25'
18'	W16x40	34'	16'	1' 6"	#5s @12in O.C. T&B	4'	24	#6	9"	Option 10	27'
20'	W21x44	34'	17'	1' 6"	#6s @12in O.C. T&B	5'	30	#7	11"	Option 14	29'
22'	W16x50	34'	18'	1' 6"	#6s @12in O.C. T&B	4'	24	#6	9"	Option 10	31'
25'	W18x55	34'	20'	1' 6"	#7s @12in O.C. T&B	4'	24	#6	9"	Option 11	34'
30'	W21x62	34'	22'	1' 9"	#8s @12in O.C. T&B	5'	30	#7	11"	Option 14	39'
35'	W24x76	34'	22'	2' 3"	#9s @12in O.C. T&B	5'	30	#7	11"	Option 16	44'
40'	W24x94	34'	22'	2' 9"	#10s @12in O.C. T&B	5'	30	#7	11"	Option 16	49'

## Column and Foundation Requirements (Based on ASCE 7-10)

Display Height	Braced Column	Spread Footing				Pier and Pier Reinforcement				Anchors and Base Plates**	Column Length
		Footing Length	Footing Width	Footing Depth	Steel Reinforcement	Pier Diameter	Quantity	Size	Hook length		
8'	W10x22	38'	9' 6"	1' 6"	#4s @12in O.C. T&B	3'	18	#5	8"	Option 3	17'
10'	W12x26	38'	11'	1' 6"	#4s @12in O.C. T&B	3'	18	#5	8"	Option 5	19'
12'	W12x30	38'	12'	1' 6"	#4s @12in O.C. T&B	3'	18	#5	8"	Option 5	21'
14'	W14x34	38'	13'	1' 6"	#5s @12in O.C. T&B	3'	18	#5	8"	Option 8	23'
16'	W16x36	38'	15'	1' 6"	#5s @12in O.C. T&B	4'	24	#6	9"	Option 10	25'
18'	W16x40	38'	16'	1' 6"	#5s @12in O.C. T&B	4'	24	#6	9"	Option 10	27'
20'	W21x44	38'	17'	1' 6"	#6s @12in O.C. T&B	5'	30	#7	11"	Option 14	29'
22'	W18x50	38'	19'	1' 6"	#6s @12in O.C. T&B	4'	24	#6	9"	Option 11	31'
25'	W18x55	38'	21'	1' 6"	#7s @12in O.C. T&B	4'	24	#6	9"	Option 11	34'
30'	W21x68	38'	22'	1' 9"	#8s @12in O.C. T&B	5'	30	#7	11"	Option 14	39'
35'	W24x76	38'	22'	2' 3"	#9s @12in O.C. T&B	5'	30	#7	11"	Option 16	44'
40'	W24x94	38'	22'	2' 9"	#10s @12in O.C. T&B	5'	30	#7	11"	Option 16	49'

## Chart Notes:

1. If the display height is between chart values shown above, use the next highest value.
2. All installations will be braced with laterals placed at 10' increments on front and back of the column starting at 10' above grade. See 241-0416 for lateral sizes.
3. Wind loading figured at **Exposure "C" - Open terrain** with scattered obstructions having heights generally less than 30 feet. This category includes flat open country, grasslands, and all water surfaces in hurricane prone areas.
4. Wind loading figured at **Exposure "B" - Urban and suburban areas**, wooded areas, or other terrain with numerous closely spaced obstructions having the size of single-family dwellings or larger. These areas prevail in the upwind direction for a distance of 2600 feet or 20 times the structure height, whichever is greater.
5. \*\*Please see DWG-0818 to determine base plate and anchor sizes from the option listed above.
6. Quantity of Pier reinforcements listed is **PER PIER**.

Outdoor Scoreboard  
Footing Installation  
4 Column  
Multi-Section



Nevco, Inc.  
Greenville, Illinois 62246

Drawing No.

241-0412

Drawn

CJS

Date

12/14/18

Sheet

of  
7 8



4				3				2				1				Rev		A	
180 MPH WIND ZONES																			
EXPOSURE C (See Note 3)																			
Column and Foundation Requirements (Based on ASCE 7-10)																			
Display Height	Braced Column	Spread Footing				Pier and Pier Reinforcement				Anchors and Base Plates**	Column Length								
		Footing Length	Footing Width	Footing Depth	Steel Reinforcement	Pier Diameter	Quantity	Size	Hook Length										
10'	W18x35	22	16'	1' 6"	#5s @12in O.C. T&B	4'	24	#6	9"	Option 11	19'								
12'	W16x40	22	17'	1' 6"	#5s @12in O.C. T&B	4'	24	#6	9"	Option 10	21'								
14'	W16x50	22	19'	1' 6"	#5s @12in O.C. T&B	4'	24	#6	9"	Option 10	23'								
16'	W18x55	22	21'	1' 6"	#7s @12in O.C. T&B	4'	24	#6	9"	Option 11	25'								
18'	W21x55	22	22'	1' 6"	#7s @12in O.C. T&B	5'	30	#7	11"	Option 14	27'								
20'	W21x62	22	22'	2'	#8s @12in O.C. T&B	5'	30	#7	11"	Option 14	29'								
22'	W21x68	22	22'	2' 3"	#8s @12in O.C. T&B	5'	30	#7	11"	Option 14	31'								
25'	W24x76	22	22'	2' 6"	#9s @12in O.C. T&B	5'	30	#7	11"	Option 16	34'								
30'	W24x94	22	22'	3' 6"	#11s @12in O.C. T&B	5'	30	#7	11"	Option 16	39'								
35'	W24x117	22	22'	4' 3"	#12s @12in O.C. T&B	5'	30	#7	11"	Option 17	44'								
40'	W24x146	22	22'	5' 3"	#12s @12in O.C. T&B	5'	30	#7	11"	Option 17	49'								
Column and Foundation Requirements (Based on ASCE 7-10)																			
Display Height	Braced Column	Spread Footing				Pier and Pier Reinforcement				Anchors and Base Plates**	Column Length								
		Footing Length	Footing Width	Footing Depth	Steel Reinforcement	Pier Diameter	Quantity	Size	Hook Length										
8'	W14x34	26	14'	1' 6"	#5s @12in O.C. T&B	3'	18	#5	8"	Option 8	17'								
10'	W16x40	26	16'	1' 6"	#5s @12in O.C. T&B	4'	24	#6	9"	Option 10	19'								
12'	W21x44	26	17'	1' 6"	#6s @12in O.C. T&B	5'	30	#7	11"	Option 14	21'								
14'	W18x50	26	19'	1' 6"	#6s @12in O.C. T&B	4'	24	#6	9"	Option 11	23'								
16'	W21x55	26	21'	1' 6"	#7s @12in O.C. T&B	5'	30	#7	11"	Option 14	25'								
18'	W21x62	26	22'	1' 6"	#7s @12in O.C. T&B	5'	30	#7	11"	Option 14	27'								
20'	W21x68	26	22'	2'	#8s @12in O.C. T&B	5'	30	#7	11"	Option 14	29'								
22'	W18x76	26	22'	2' 3"	#8s @12in O.C. T&B	46"	27	#6	9"	Option 12	31'								
25'	W24x84	26	22'	2' 6"	#9s @12in O.C. T&B	5'	30	#7	11"	Option 16	34'								
30'	W24x103	26	22'	3' 6"	#11s @12in O.C. T&B	5'	30	#7	11"	Option 16	39'								
35'	W24x131	26	22'	4' 3"	#12s @12in O.C. T&B	5'	30	#7	11"	Option 17	44'								
40'	W24x162	26	22'	5' 3"	#12s @12in O.C. T&B	5'	30	#7	11"	Option 18	49'								
Column and Foundation Requirements (Based on ASCE 7-10)																			
Display Height	Braced Column	Spread Footing				Pier and Pier Reinforcement				Anchors and Base Plates**	Column Length								
		Footing Length	Footing Width	Footing Depth	Steel Reinforcement	Pier Diameter	Quantity	Size	Hook Length										
8'	W14x34	30'	14'	1' 6"	#5s @12in O.C. T&B	3'	18	#5	8"	Option 8	17'								
10'	W16x40	30'	16'	1' 6"	#5s @12in O.C. T&B	4'	24	#6	9"	Option 10	19'								
12'	W21x44	30'	17'	1' 6"	#6s @12in O.C. T&B	5'	30	#7	11"	Option 14	21'								
14'	W18x50	30'	19'	1' 6"	#6s @12in O.C. T&B	4'	24	#6	9"	Option 11	23'								
16'	W21x55	30'	21'	1' 6"	#7s @12in O.C. T&B	5'	30	#7	11"	Option 14	25'								
18'	W21x62	30'	22'	1' 6"	#7s @12in O.C. T&B	5'	30	#7	11"	Option 14	27'								
20'	W21x68	30'	22'	2'	#8s @12in O.C. T&B	5'	30	#7	11"	Option 14	29'								
22'	W24x76	30'	22'	2' 3"	#8s @12in O.C. T&B	5'	30	#7	11"	Option 16	31'								
25'	W24x84	30'	22'	2' 9"	#9s @12in O.C. T&B	5'	30	#7	11"	Option 16	34'								
30'	W24x104	30'	22'	3' 6"	#11s @12in O.C. T&B	5'	30	#7	11"	Option 17	39'								
35'	W24x131	30'	22'	4' 6"	#12s @12in O.C. T&B	5'	30	#7	11"	Option 17	44'								
40'	W24x162	30'	22'	5' 6"	#12s @12in O.C. T&B	5'	30	#7	11"	Option 18	49'								
Chart Notes:																			
1. If the display height is between chart values shown above, use the next highest value.																			
2. All installations will be braced with laterals placed at 10' increments on front and back of the column starting at 10' above grade. See 241-0416 for lateral sizes.																			
3. Wind loading figured at <b>Exposure "C" - Open terrain</b> with scattered obstructions having heights generally less than 30 feet. This category includes flat open country, grasslands, and all water surfaces in hurricane prone areas.																			
4. Wind loading figured at <b>Exposure "B" - Urban and suburban areas</b> , wooded areas, or other terrain with numerous closely spaced obstructions having the size of single-family dwellings or larger. These areas prevail in the upwind direction for a distance of 2600 feet or 20 times the structure height, whichever is greater.																			
5. **Please see DWG-0818 to determine base plate and anchor sizes from the option listed above.																			
6. Quantity of Pier reinforcements listed is <b>PER PIER</b> .																			