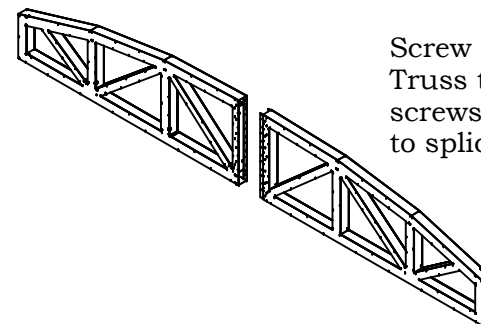
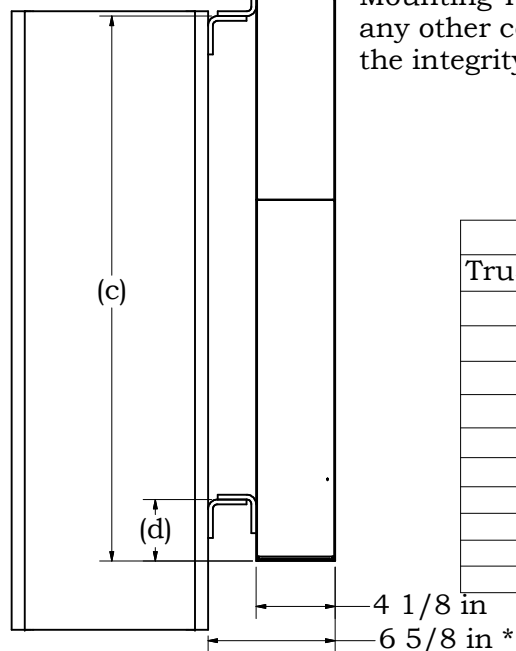


This truss is rated at 150 mph when mounted to columns at factory manufactured mounting locations. Mounting Trusses to columns in any other configuration can affect the integrity of the sign.

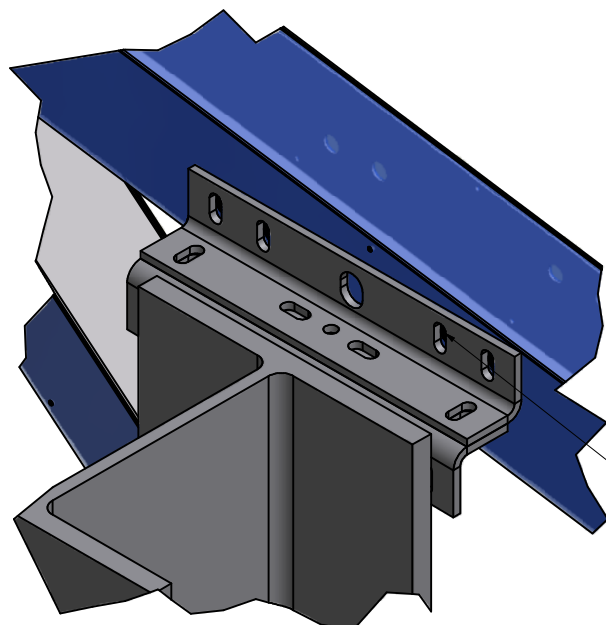
Screw Multisection Truss together with screws in bag taped to splice connection.



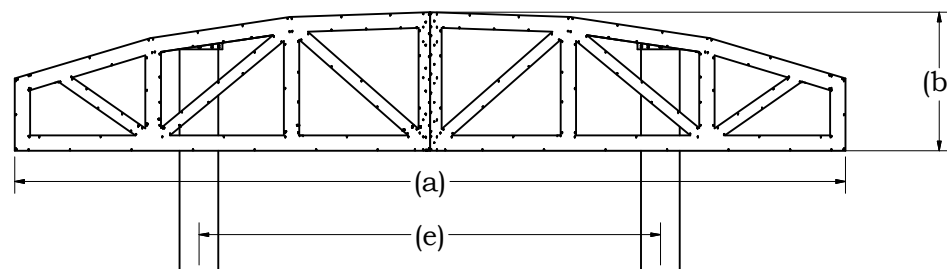
Variation Chart					
Truss Width (a)	Truss Height (b)	Bracket Height (c)	Bracket Height (d)	Column Width (e)	Est Weight
18'	3'	28 13/32"	3 7/32"	10'	145
16'	3.7'	34 1/2"	2"	8'	136
18'	4'	37 1/8"	2"	10'	165
12'	2' 6"	17 3/4"	2"	8'	90
10'	2' 6"	18 7/8"	2"	8'	64
8'	2' 6"	18 7/8"	2"	6'	58
14'	2'	18 1/8"	2"	8'	78
11.02'	2' 6"	20 3/4"	2"	8'	77
16'	4'	40"	2"	8'	136
18'	2'	17 1/4"	2"	10'	111



**Bracket Orientation**



(4) 3/8" serrated flange bolts supplied by Nevco to attach brackets to truss



**Front View**

\* Dimension shown is typical. Slots in brackets allow for approximately 1/2" variation.

Installation  
of Aluminum  
Trusses  
on Two Columns



Nevco, Inc.  
Greenville, Illinois 62246

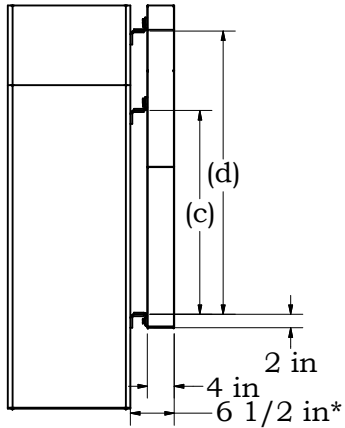
Drawing No. 241-0388

Drawn WHP Date 1/28/2020

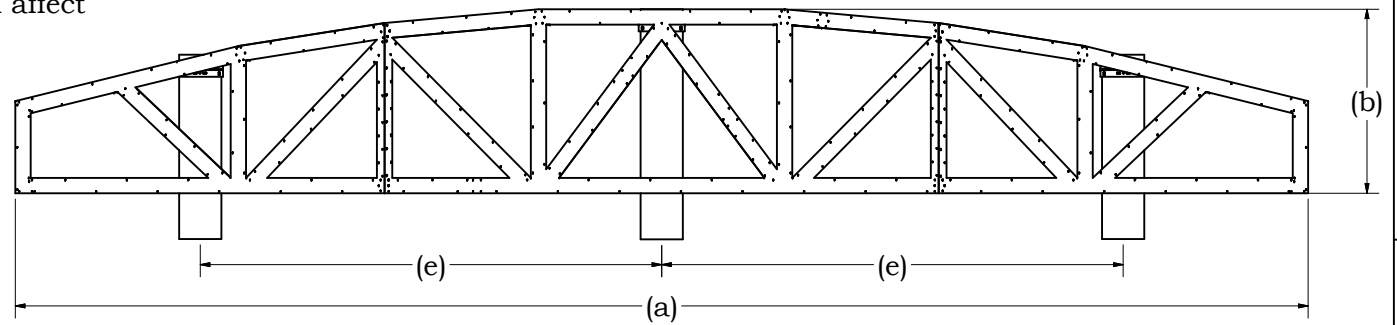
Sheet 1 of 1

This truss is rated at 150 mph when mounted to columns at factory manufactured mounting locations. Mounting trusses to columns in any other configuration can affect the integrity of the truss.

### Bracket Orientation

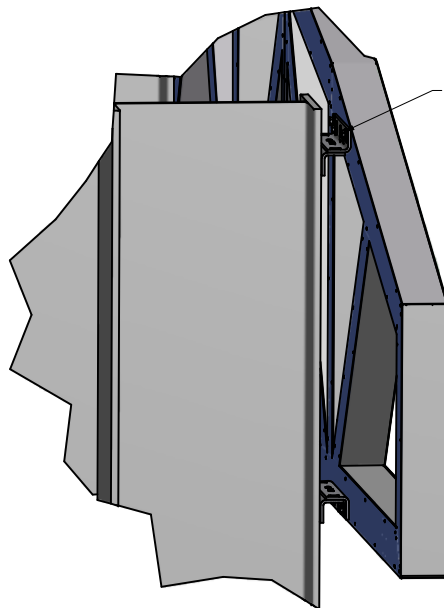


### Front View

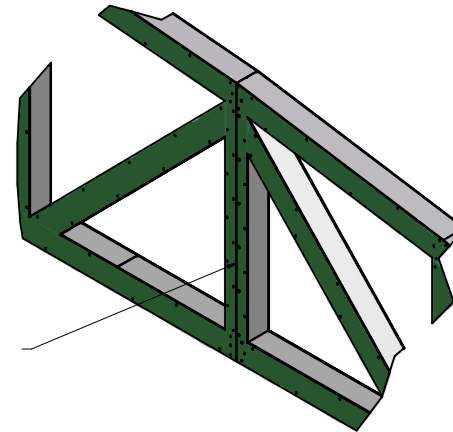


Variation Chart

Truss Width (a)	Truss Height (b)	Bracket Height (c)	Bracket Height (d)	Column Spacing (e)	Est Weight
28'	4'	38"	43 1/2"	120"	257
24'	4'	32 1/4"	42 7/8"	96"	220
24'	3'	19 15/16"	30 15/32"	96"	185
20'	4'	25 5/8"	44 3/4"	108"	110



Bolt bracket to truss using four 3/8 inch serrated flange bolts supplied by Nevco



Screw truss sections together using screws in bag taped to splice connection (front and back of truss). Use screws wherever possible.

\* Dimension shown is typical. Slots in brackets allow for approximately 1/2" variation.

Installation of  
Aluminum Truss on  
Three Columns



Nevco, Inc.  
Greenville, Illinois 62246

Drawing No. 241-0390

Drawn BRS

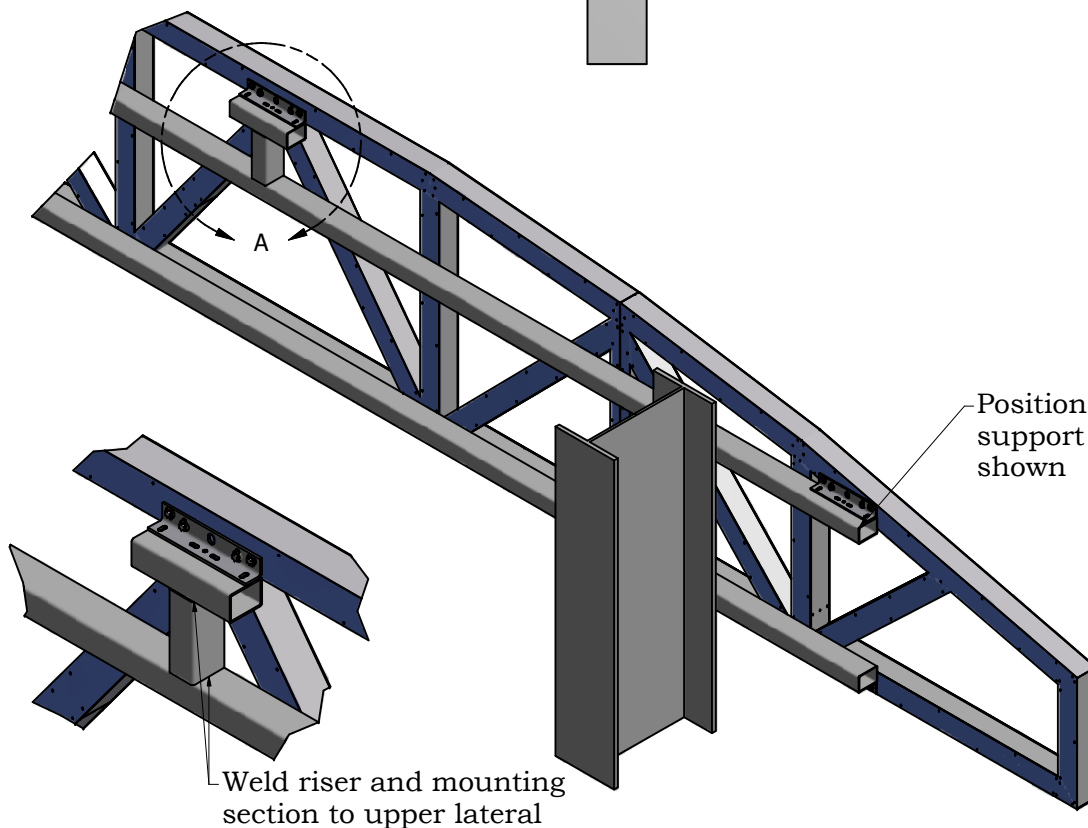
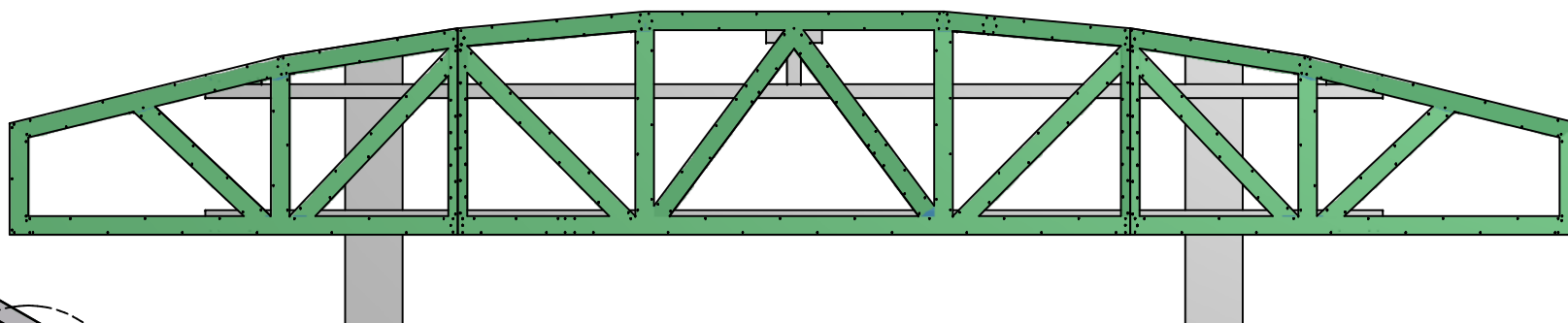
Date 4/5/2018

Sheet 1 of 2

This sheet refers to the truss installed  
on two columns using laterals

Rev	E
-----	---

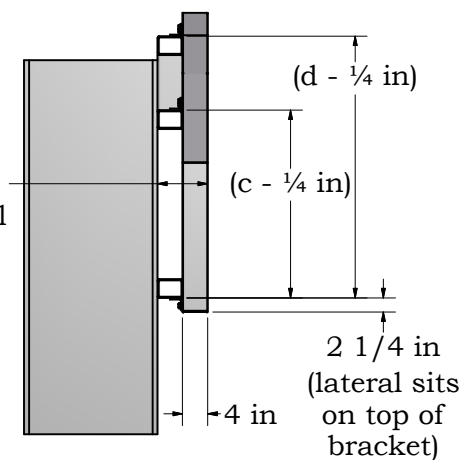
Front View



Weld riser and mounting  
section to upper lateral

Position laterals so that they  
support the outer brackets as  
shown

Distance depends  
on width of lateral



Side View  
(dimensions from  
Sheet 1)

Individual brackets are 12" wide and are  
centered on the columns (e) on sheet 1.

Example: 3 columns spaced 10' apart plus  
12" for the bracket would require a lateral  
that is 21' long.

Installation of  
Aluminum Truss on  
Three Columns



Nevco, Inc.  
Greenville, Illinois 62246

Drawing No. 241-0390

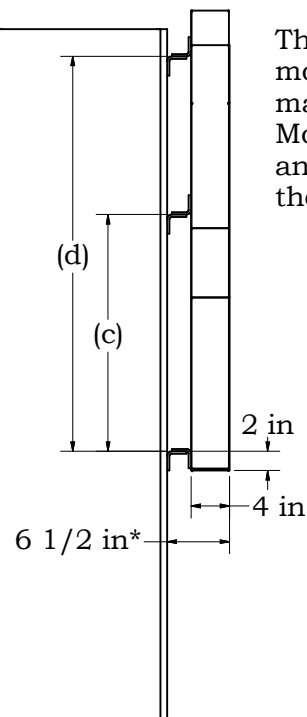
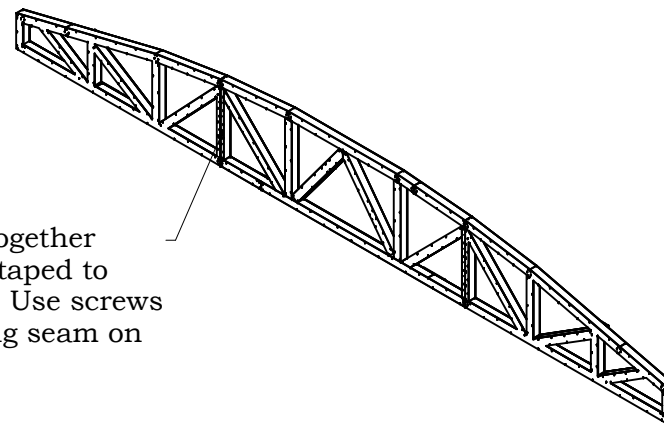
Drawn BRS

Date 4/5/2018

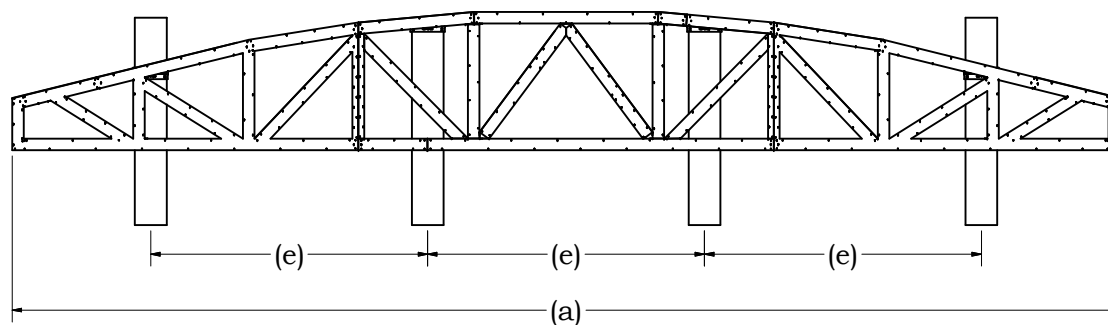
Sheet 2 of 2

This truss is rated at 150 mph when mounted to the columns at factory manufactured mounting locations. Mounting trusses to columns in any other configuration can affect the integrity of the sign.

Screw truss sections together using screws in a bag taped to the splice connection - Use screws wherever possible along seam on both front and back.

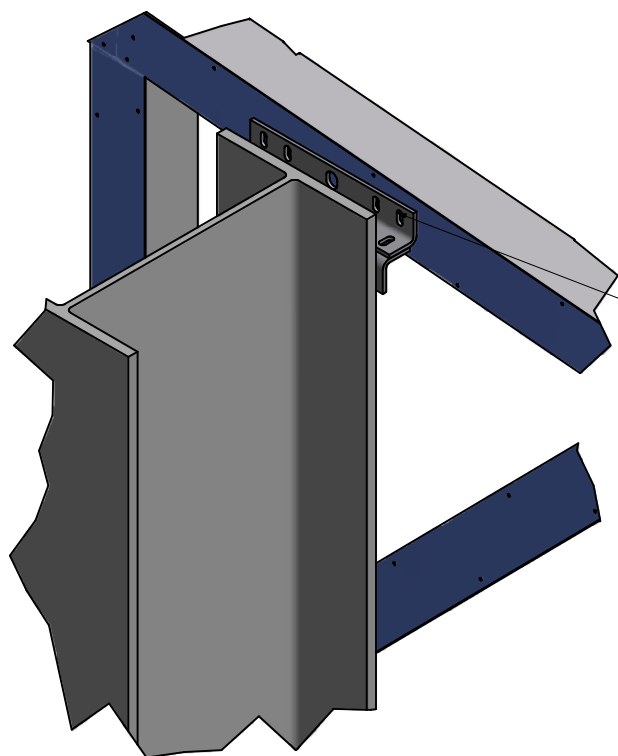


Variation Chart					
Truss Width (a)	Truss Height (b)	Bracket Height (c)	Bracket Height (d)	Column Spacing (e)	Est Weight
32'	4'	32 1/4"	42 7/8"	8'	294
36'	4'	15 1/2"	39 9/16"	10'	331



Attach brackets to truss using four 3/8" serrated flange bolts supplied by Nevco

\* Dimension shown is typical. Slots in brackets allow for approximately 1/2" variation.



Installation of Aluminum  
Trusses on  
Four Columns



Nevco, Inc.  
Greenville, Illinois 62246

Drawing No. 241-0394

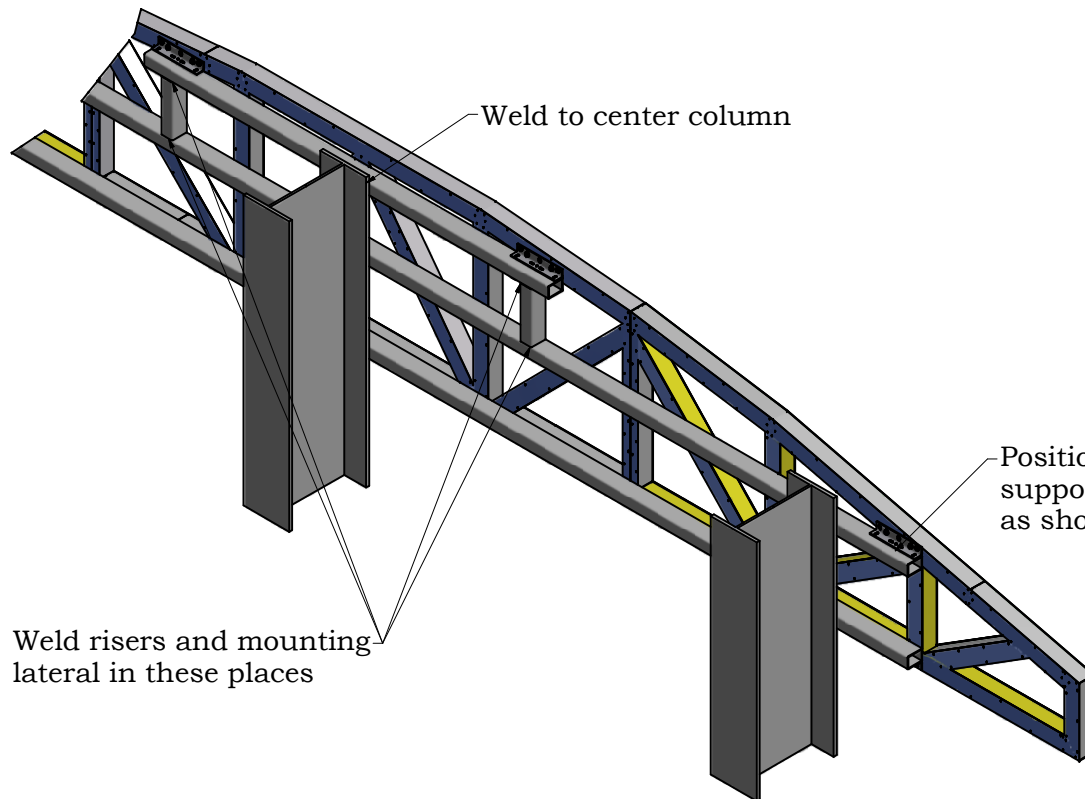
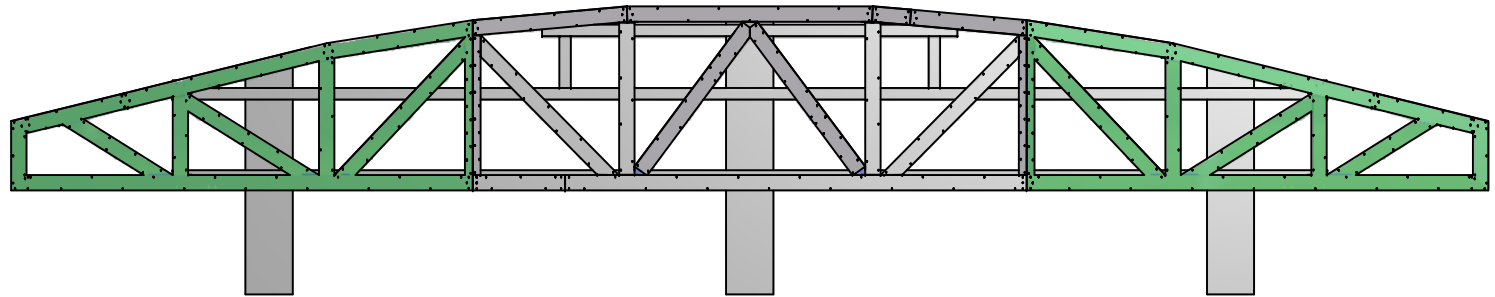
Drawn BRS Date 8/23/2019

Sheet 1 of 2

This sheet refers to the truss installed  
on three columns using laterals

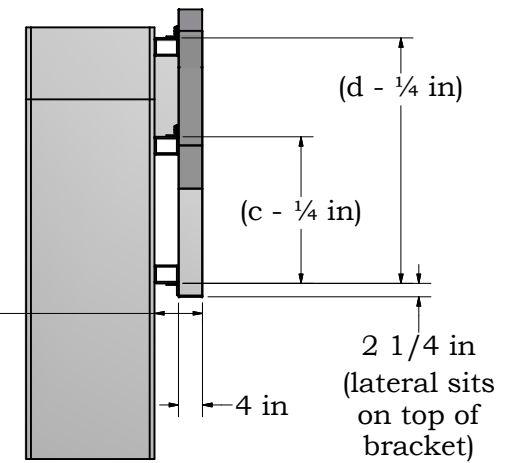
Rev	C

Front View



Distance depends  
on width of lateral

Position laterals so that they  
support the outer brackets  
as shown



Side View  
(dimensions from  
sheet 1)

Individual brackets are 12" wide and are  
centered on the columns (e) on sheet 1.

Example: 4 columns spaced 8' apart plus  
12" for the bracket would require a lateral  
that is 25' long.

Installation of  
Aluminum Truss on  
Four Columns



Nevco, Inc.  
Greenville, Illinois 62246

Drawing No. 241-0394

Drawn BRS

Date 8/23/2019

Sheet 2 of 2